

John F. Healey

Town Fields Study

9-22-03

Weston & Sampson
ENGINEERS ARCHITECTS

Since 1899, Weston & Sampson has been providing municipalities, public agencies, and private sector clients with cost-effective and innovative solutions to their infrastructure and environmental challenges. With over 200 professionals throughout New England, Weston & Sampson offers capabilities ranging from project development and planning through design, construction, and long-term operation and maintenance.

Call
978-532-1900
CORPORATE HEADQUARTERS

Weston & Sampson
www.westonandsampson.com
OFFICES THROUGHOUT NEW ENGLAND

- Water
- Wastewater
- Stormwater
- Transportation
- Solid Waste
- Geotechnical
- Environmental
- Information Technology
- Operation & Maintenance
- Landscape Architecture
- Construction Services
- Training

Weston & Sampson
ENGINEERS ARCHITECTS
Your Natural Resource
for Innovative Solutions
since 1899

Bookmark

fold back-and-forth a few times
then tear along perforated line

10 miles for 1 : 25,000 scale

8
7
6
5
4
3
2
1
0 inches

TOWN OF
MIDDLEBOROUGH,
MASSACHUSETTS

DRAFT
TOWN FIELDS STUDY
REPORT

22 SEPTEMBER 2003



Weston & Sampson
ENGINEERS, INC.

Report

Weston & Sampson Engineers, Inc.
100 Foxboro Boulevard
Foxboro, MA 02035
www.westonandsampson.com
Tel: 508-698-3034 Fax: 508-698-0843

Table of Contents

Section	Page
Cover	
Table of Contents	i
1.0 Executive Summary	1.0-1
2.0 Introduction	2.0-1
3.0 Recommendations & Priorities	3.0-1
4.0 Field Use Analysis	4.0-1
4.1 Summary	4.0-1
4.2 Introduction	4.0-1
4.3 Field Use Analysis	4.0-3
4.4 Projected Field Needs	4.0-6
5.0 Existing Facilities Evaluation	5.0-1
5.1 Summary	5.0-1
5.2 Existing Facilities	5.0-3
6.0 Facilities Expansion Evaluation	6.0-1
6.1 Summary	6.0-1
6.2 Site Evaluations	6.0-2
6.3 Athletic Field / Facility Templates	6.0-3
7.0 Maintenance	7.0-1

Appendix A – Scheduled Time Data

Appendix B – Existing Field Time Utilization (Ex. Game Rate Data)

Appendix C – Field Time Projections (Projected Game Rate Data)

Appendix D – MassGIS Mapping

Appendix E – Conceptual Development Plans

1.0 Executive Summary

The Town of Middleborough engaged Weston & Sampson Engineers, Inc. in 2003 to prepare a study of the existing athletic fields and parcels that may potentially be developed for future recreational use; and to develop several conceptual recreation development plans based upon the report analysis and recommendations.

The scope of work consisted of reviewing existing reports and studies; evaluating existing facilities for adequacy of quality and quantity; inspection and evaluation of town and privately owned parcels for suitability for recreational development; the assessment of existing facility maintenance and recommendation of a comprehensive maintenance program for all facilities; and consulting with town officials, sports league officials and other interested parties to gather relevant data; and incorporating relevant demographic and statistical data to complete the work of the report.

Our analysis of existing use and scheduling indicate that field quantities and time provided to most sports during their respective prime season of play is at or nearing full capacity for all sports. Construction of one (1) new Football ^{field} is recommended now to overcome current overuse of the Battis Field site. We ^{also} recommend construction of a football practice field to allow for resting some shared use fields.

✓
TODAY

Our analysis of projected field use and scheduling indicate the need for New field construction ~~is~~ will be required for: 2 baseball 60' diamonds, 3 softball fields, 1 soccer field, and 2 football fields to meet future field demands by 2008.

✓
TODAY?

A review of the quality of the existing facilities indicates that many sites have ADA / Handicap Accessibility deficiencies; many sites have field, parking or equipment problems requiring corrective action; and that substantial field or facility expansion possibilities exist at several sites. Field Turf quality was found to be variable from facility to facility. A turf industry recommended maintenance plan and facility irrigation improvement program is outlined to keep fields in their best and safest condition.

Several parcels emerge as good candidates for new recreational facility development or expansion. Among these, the former gravel pit area ^{BEHIND} the High School Complex, the town owned parcel on Tispaquin Street, and several private parcels adjacent to the West Side fields. Section 6.2 reviews the possibilities in detail; conceptual plans for the evaluated sites are included in Appendix E.

✓

1.0 Executive Summary

The Town of Middleborough engaged Weston & Sampson Engineers, Inc. in 2003 to prepare a study of the existing athletic fields and parcels that may potentially be developed for future recreational use; and to develop several conceptual recreation development plans based upon the report analysis and recommendations.

The scope of work consisted of reviewing existing reports and studies; evaluating existing facilities for adequacy of quality and quantity; inspection and evaluation of town and privately owned parcels for suitability for recreational development; the assessment of existing facility maintenance and recommendation of a comprehensive maintenance program for all facilities; and consulting with town officials, sports league officials and other interested parties to gather relevant data; and incorporating relevant demographic and statistical data to complete the work of the report.

Our analysis of existing use and scheduling indicate that field quantities and time provided to most sports during their respective prime season of play is at or nearing full capacity for all sports. Construction of one (1) new Football is recommended now to overcome current overuse of the Battis Field site. We recommend construction of a football practice field to allow for resting some shared use fields.

Our analysis of projected field use and scheduling indicate the need for New field construction will be required for: 2 baseball 60' diamonds, 3 softball fields, 1 soccer field, and 2 football fields to meet future field demands by 2008.

A review of the quality of the existing facilities indicates that many sites have ADA / Handicap Accessibility deficiencies; many sites have field, parking or equipment problems requiring corrective action; and that substantial field or facility expansion possibilities exist at several sites. Field Turf quality was found to be variable from facility to facility. A turf industry recommended maintenance plan and facility irrigation improvement program is outlined to keep fields in their best and safest condition.

Several parcels emerge as good candidates for new recreational facility development or expansion. Among these, the former gravel pit area the High School Complex, the town owned parcel on Tispaquin Street, and several private parcels adjacent to the West Side fields. Section 6.2 reviews the possibilities in detail; conceptual plans for the evaluated sites are included in Appendix E.

Section 2.0 Introduction

The Town of Middleborough, Massachusetts to develop this Town Fields Study Report, retained Weston & Sampson Engineers, Inc. in the spring of 2003. The purpose of the report is to inventory, evaluate, analyze, ^{AND} study the utilization of existing fields, ~~and~~ examine possible redesign of existing facilities to maximize use, ^{AND} ~~and~~ to evaluate and analyze potential new field development sites, through the development of existing or private properties to be acquired by the town.

We wish to express our gratitude to the town staff, public schools department staff, and many sports league representatives, and Athletic Field Committee members, who contributed their guidance, time, knowledge and experience to the development of this report. ^W Without whom the report could not have been completed.

^V THEIR INPUT



TOWN PARCELS

Section 3.0 Recommendations & Priorities

This section contains a restatement of the summaries of Sections 4.0 to Section 7.0.

Section 4.0 Field Use Analysis Summary

- Town fields receive the most play during the spring, followed by the fall, which is ~~about~~ ^{NEARLY} as busy as spring. The summer season is the least used. (V)
- We recommend adoption of the "Realistic" field guidelines discussed in Section 4.2.
- Growth rate ^S for town sports ~~generally~~ ^X appear to be higher ^{THAN} the general population increases. (V)(V)(V)
- All sports are at or nearing full capacity during their prime season. Future team and league expansions will likely require new field development of many different types.
- We recommend construction of a new football game facility to alleviate the overuse at Battis Field.
- Although some needed future fields indicated in Table 4.4-3 may be incorporated in the existing field supply, most will not. New field construction ~~is~~ will be required for: 2 baseball 60' diamonds, 3 softball fields, 1 soccer field, and 2 football fields. ^{by 2008.} (V)(V)

Section 5.0 Existing Facilities Evaluation Summary

Cursory review of the existing facilities recommendations is included below. A more thorough analysis is provided in section 5.2.

General comments common to many of the inventoried sites:

- Most of the inventoried facilities are non-compliant to some extent with the Americans with Disabilities Act (ADA) guidelines. The goal of the ADA guidelines is to provide handicapped citizens with "equal enjoyment of goods, services, facilities, privileges, advantages and accommodations," as well as the "right to participate and have an equal opportunity to obtain the same result as others to the extent possible." Where able-bodied spectators are provided space to cheer on sports teams, handicap patrons are to be provided a place amongst the able-bodied to experience the event in a similar way. Where children's play areas are provided, children are to be provided with accessible equipment to enjoy play experiences with other able-bodied children and handicapped guardians accessible ways to supervise them. (V) Re-word

At many of the facilities, accessibility for handicapped patrons ends at the edge of the pavement, because only inaccessible grass surfaces or gravel are provided between the parking areas and site features. Play equipment areas located within lawn areas prevent handicapped children and guardians from using them. At some sites, handicapped spectators must view games from a distance.

We recommend the installation of accessible routes of travel at each facility. ~~That includes participation and not excludes.~~ Experience has shown that able-bodied patrons often prefer to use the accessible pathways, when available. The accessible pathways provide secondary benefits as well, tending to define and separate different site uses and channel patron ingress and egress. Federal regulations will require future site improvements to be accessible to both child and guardian in both use and access.

✓
✓

✓
HANDICAPPED

- Most of the sites lack irrigation systems and water is a key component for turf to survive. Installation of such systems will help maintain quality turf surfaces on fields that are heavily used.

The following comments summarize recommendations at specific facilities:

- Burkland School / Mayflower School / Field of Dreams Complex: make remedial repairs mentioned to equipment. The large tee ball ^{Field} can be upgraded to a 200' field by relocating the existing 200' field. Install underground irrigation systems at all fields. ✓
- High School Complex: repair backstop; install protective fences at players benches; implement a written field improvement plan emphasizing prevention; regularly aerate and slice seed turf areas; add new equipment to shorten maintenance tasks; consider regrading and reconfiguration of the baseball / soccer / field hockey area to improve play; install underground irrigation systems to maintain turf vigor; consider field expansion in the former gravel mining area as noted in Section 6.0. ✓
- Pierce Playground: make remedial repairs mentioned to equipment; replace wood poles at lower fields with chain link fence; find alternative to use of lower fields as a parking area; implement a more aggressive turf management plan to encourage turf growth on fields; consider replacement of Battis turf with a modern no maintenance synthetic turf system.
- Healey Complex: verify on the ground the limits of surrounding wetlands, in order to pursue expansion possibilities; improve definition and channeling of vehicles in the gravel parking area through the installation of wood guard rails.
- West Side Fields: make remedial repairs noted to existing equipment; no useful reconfiguration of the existing facility to increase use substantially apply new color coating to basketball court; consider expansion of the facility as noted in Section 6.0. ✓

Re: Cost of useful day

Section 6.0 Facilities Expansion Evaluation Summary

The following is a cursory review of the recommendation outlined in Section 6.2.

Council on Aging / Church of the Green: Two potential development areas exist at this site, but all on the privately owned parcels. The site is especially attractive for the construction 1-2 lighted football fields. Moderate to steep slopes in places will require some substantial earthwork.

Green School House: We do not recommend development of the site for field use. Due to wetland and slope constraints, the area able to be developed is too small to contribute substantially to the recreation mix within town.

Healey Complex: No further development is possible at this site, unless field verification of the wetland limits add additional developable land to the site. Expansion possibilities for this site are discussed in greater detail in Section 6.0.

Also
consider
Church
Property

High School Complex: We recommend acquisition of the necessary portion of the adjacent private parcel to permit development of the former gravel mining area into addition town recreational fields. Development of a more premier type soccer and Field Hockey Stadium is our preferred development scenario.

Plymouth Street Property: We cautiously recommend development of some type of athletic facility at the site only after comprehensive wetland identification is completed. Potential space exists for a combination of medium and large size athletic fields. Development here has the advantage of no additional land acquisitions.

Tispaquin Street & Chestnut Street Properties: ~~It is unfortunate that area residents have opposed past recreation development plans for Tispaquin site.~~ Of all the sites evaluated, this is the most easily and cheaply constructed site for a variety of uses and an obvious first choice. We recommend development of this site for athletic use.

We would recommend development of the *Chestnut* site, after further investigations to determine conservation restrictions / penalties for development and existence / extents of any wetland land areas. The site has the potential to be an outstanding recreation complex.

West Side Fields: We recommend acquisition of the private parcels and development of an expanded recreation facility here with a lighted football field.

The High School Complex expansion, the Tispaquin site, and the West side Fields stand out as first choice opportunities for new field spaces. In a close second place, the Council on Aging / Church of the Green site offer additional football fields, in an area where few

Ⓟ

Ⓟ
Ⓟ
Ⓟ

Ⓟ

Ⓟ
Ⓟ

will be disturbed. The remaining sites are not recommended or require additional study to make a final determination.

Section 7.0 Maintenance

Field and turf quality and conditions vary widely between the various fields evaluated. One reason is unequal levels of care and maintenance applied to individual fields. We recommend the implementation of a written maintenance standard to equalize the maintenance playing field.

Re-word

Another reason is a lack of underground irrigation systems to keep the field turf vital and healthy. We recommend a programmatic installation of such systems as soon as time and funds permit.

Section 4.0 Field Use Analysis

4.1 Summary

- Town fields receive the most play during the spring, followed by the fall, which is ~~about~~ ^{NEARLY} as busy as spring. The summer season is the least used. (✓)
- We recommend adoption of the "Realistic" field guidelines discussed in Section 4.2.
- Growth rate ^S for town sports ~~generally~~ ^{THAN} appear to be higher ^A the general population increases. (✓) (✓)
- All sports are at or nearing full capacity during their prime season. Future team and league expansions will likely require new field development of many different types.
- We recommend construction of a new football game facility to alleviate the overuse at Battis Field.
- Although some needed future fields indicated in Table 4.4-3 may be incorporated in the existing field supply, most will not. New field construction ~~is~~ will be required for: 2 baseball 60' diamonds, 3 softball fields, 1 soccer field, and 2 football fields ^{by 2008}. (✓)

4.2 Introduction

This report section analyzes the actual time used at the existing field facilities, ~~in order~~ ^{AND} to determine the extent of field utilization, ~~in order~~ ^{AND} to determine present and future field quantity requirements. (✓) (✓)

To perform this analysis, survey forms were forwarded to all organized town leagues and identified field users. The survey forms gathered data regarding league season start and end dates, team sizes and quantities, age distribution and quantity of players, fields and NUMBER times used, quantity and length of games and practices, and comments regarding field availability and maintenance issues. NUMBER

The survey data was then organized into two sets of tables. One set of tables compiled an inventory of the time each individual field was scheduled for use (Scheduled Time Data.) A second set of tables calculated the quantity of field hours required to play a particular sport by mathematically combining team quantity, length and quantity of games played per week, length and quantity of practices per week, with adjustment factors for home and away game play, rain makeup dates, times when field use is shared between two or more sports, and field setup / takedown time (Game Rate Data.)

We analyzed and compared the data contained in the two sets of tables. Ideally the time tabulated by each method should be approximately the same. We found that the Game

Rate Data calculations were within plus or minus 10% of the Scheduled Time Data for individual sports during their respective prime season, but to rigidly accurately predict existing field utilization during the off seasons. This appears due to exceptions, like shared use conditions, league play ending abruptly part way through the season, etc., which are difficult to account for mathematically. (4)

To understand the extent of existing field utilization, we examined the Scheduled Time Data for each respective sport and season, looking for any free time available for use by the leagues on all appropriate fields. The results were noted in a descriptive manner, such as, "at full capacity" or "some free time available". The data in this set of tables provided adequate indicators of whether playing time was available or not.

Future field requirements were determined by calculating the difference between existing Game Rate Data and projected Game Rate Data. The result was then divided by the quantity of hours available to a sport by one field to calculate the number of fields needed. Adjustments were made to include provision for the "realistic recommendations" described below.

Ideal Utilization

To provide a better understanding of the analysis and recommendations in this report, it is useful to compare the industry standard recommendations with the assumptions used in this report. The industry standards and report assumptions can generally be divided in two categories - "ideal utilization" and "realistic utilization assumptions." The list below outlines some of the ideal recommendations of turf professionals regarding the use and maintenance of athletic facilities.

- Industry field and turf professionals recommend limiting field event scheduling to 25-50 events (100-250 hours) of use per year. Field turf areas become noticeably thin and bare beyond this limit.
- Each field should receive eight (8) weeks rest (no use at all) during the active growing season each year to allow the turf to rejuvenate prior to next year's use.
- Each field will receive 1" minimum of water, through rain or irrigation, each week to maintain healthy and vigorous growth.
- Turf will receive the same level of industry recommended maintenance during active, inactive, and field rest periods. Industry maintenance standards are discussed in Section 7.0 of this report.
- Each field should receive one (1) full year of rest every four (4) years to permit turf to rejuvenate itself and develop a sufficient "thatch" layer to ensure player safety. (Although seasonal thatch removal is a normal part of turf maintenance, athletic fields

require a certain thickness of thatch to protect roots from players and to cushion players from injury.)

- Football, Soccer, and Lacrosse tend to be more damaging to turf than other sports such as baseball, etc. Thus to prevent overuse of field turf, shared use field (e.g. soccer teams using baseball outfields) tends to be discouraged by field maintenance professionals.

Based on the “ideal utilization” recommendations listed above, town fields could typically be used for only several hours per week for one of the three sports seasons. Fields not irrigated would receive only minimal summer scheduling to prevent severe turf damage, while either spring or fall would remain as scheduled “rest” periods. Weston and Sampson thinks that it is unrealistic for most municipal recreation and maintenance departments to administer these ideal recommendations as a whole. Budget, personnel and facility supply limitations require a more “realistic utilization” of athletic facilities.

Realistic Utilization

- Field scheduling should be limited to 75-90% of maximum per week to allow sufficient rain date game replays; allowance for field, player, and equipment setup / takedown time; and some measure of in season rest.
- Sufficient field quantities should exist to permit fields to be rested for three to six months during the growing season every two years.
- Fields not irrigated should be scheduled for minimal use during the summer season, and play rotated frequently during the season to minimize turf damage, which occurs easily during hot dry summer months.
- Implement a field improvement program to systematically provide on-site irrigation systems for each town field. This will allow summer months, currently the least utilized season of the year, to be used as a rest and rejuvenation period for turf.
- To maintain sufficient thatch levels and vigorous turf, all fields should receive the industry recommended levels of maintenance throughout the growing season.
- Players should not use fields when turf is excessively wet, as severe turf damage can occur when used under these conditions, requiring extensive repairs.

Play on Multi-Use Soccer fields should be routinely rotated, where possible, to minimize areas of turf damage and wear.

4.3 Field Use Analysis

Field Users & Field Resources

Table 4.3-1 summarized the existing field users and season of use. Six (6) users provide services to school age children only (Nichols Middle School League, Middleborough

Table 4.3-1 Field Use by Season & Sports League

Field Users	Spring			Summer			Fall		
	March	April	May	June	July	August	September	October	November
South Shore Softball League									
Middleborough High School Teams		Track & Baseball					Football, Soccer, & Field Hockey		
Middleborough Youth Soccer Assoc.									
Nichols Middle School/Massasoit Softball									
Middleborough Babe Ruth League									
Middleborough Little League									
Middleborough Youth Softball League									
MMC Youth Football/Cheerleading									
Christian Women's Softball League									
Cobra's Football									

Table 4.3-2 Inventory of Available Fields

Field Description	Comments	Game or Practice Field
Baseball 90'	Total Fields: 3	
High School Baseball 90'	Outfield shared with Soccer Field; Used by H.S. Freshman, J.V. & Varsity Baseball, Field Hockey, Softball and some Track & Field Teams; Babe Ruth League;	G & P
Pierce Baseball 90'	Used by H.S. Varsity, Junior Varsity, & Babe Ruth Baseball Teams	G & P
Nichol's Baseball 90'	Used by Mid. Sch. P.E. Class and Baseball Teams; Babe Ruth Teams	G & P
Baseball 60'	Total Fields: 6	
Field of Dreams - Michaels Field	Used by Little League Teams	G & P
Field of Dreams - Memorial Field	Used by Little League Teams	G & P
Field of Dreams - Community Field	Used by Little League Teams	G & P
West Side – Front Baseball Field	Used by Little League Teams	Practice (Games only as necessary)
West Side – Back Baseball Field	Used by Little League Teams	Practice (Games only as necessary)
VFW/Gauthier Baseball Field	Used by Little League/Farm League Division	G & P
Tee Ball Only	Total Fields: 4	
Pierce Softball Tee Ball	Opposite Pierce Softball #3-Large; Softball Tee ball field; Used by M.Y.S.L.	G & P Softball Only
Burkland/Mayflower/Field of Dreams #1	Stewart Baseball Field	G & P Baseball Only
Burkland/Mayflower/Field of Dreams #2	Peters Baseball Field	G & P Baseball Only
Burkland/Mayflower/Field of Dreams #3	Small Practice field	Practice Only Baseball Only

Table 4.3-2 Inventory of Available Fields

Field Description	Comments	Game or Practice Field
Softball	Total Fields: 7	
High School Softball #1	Shares outfield with Soccer and/or Field Hockey Fields; Used by H.S. Softball & M.Y.S.L.	G & P
High School Softball #2	Used by H.S. Softball & M.Y.S.L.	G & P
High School Softball #3	Used by H.S. Softball & M.Y.S.L.	G & P
Pierce Softball #1	Used by M.Y.S.L., MMC Football & Cobra Football Practice	G & P
Pierce Softball #2	Used by M.Y.S.L., MMC Football & Cobra Football Practice	G & P
Pierce Softball #3 -- Large field	Used by M.Y.S.L., WCL, Carnival, Auto Show, & MMC Football.	G & P
Nichols Middle School	Used by M.Y.S.L., Mid. School Softball Team	G & P
Multi-Use Soccer/Field Hockey/Track & Field/Etc.	Total Fields: 9	
High School Soccer Field	Shared with baseball 90' outfield; Softball	G & P
High School Field Hockey Field	Shared with baseball 90' outfield; Softball	G & P
Battis Field	Used by H.S. Field Hockey, H.S. Soccer, Cobra Football, MMC Football, H.S. Football, Rec. Dept. Day Camp, Occasional Special Events	Game Only
Healy/Purchase Soccer #1	Only two of the three Healy/Purchase fields are used each year.	G & P
Healy/Purchase Soccer #2	Only two of the three Healy/Purchase fields are used each year.	G & P
Healy/Purchase Soccer #3	Only two of the three Healy/Purchase fields are used each year.	G & P
Burkland/Mayflower/Field of Dreams	Used by Burkland P.E. Class	G & P

Table 4.3-2 Inventory of Available Fields

Field Description	Comments	Game or Practice Field
Nichols Middle School	Used by Mid. Sch. Soccer Intramurals & M.Y.S.	G & P
West Side	Beyond baseball outfield fences – Limited Use	Practice Only
Football	Total Fields: 5	
Battis Field	Used by H.S. Field Hockey, H.S. Soccer, Cobra Football, MMC Football, H.S. Football, Rec. Dept. Day Camp, Occasional Special Events	Game Only
High School Football Practice Field	Inside Track, Football Practices	Practice
High School Baseball Outfield Areas	Used by MMC Football	Practice
Pierce Softball #3 Outfield	Used by MMC Football	Practice
Pierce Softball #1 & #2 Outfields	Used by Cobras Football	Practice

4.0-7

Table 4.4-2 Summary of Field Use By Players & Teams on an Annual Basis

League	1993		1997		2003		2008 Projected***	
	Players	Teams	Players	Teams	Players	Teams	Players	Teams
MHS Baseball	-	-	-	-	60	3	60	3
MHS Boy Soccer	-	-	-	-	40	2	60	3
MHS JV/V Field Hockey	-	-	40	2	40	2	40	2
MHS Football	70	3	70	3	82	3	82*	3*
Nichols MS Softball	-	-	-	-	135	9	135	9
Babe Ruth Baseball	135	9	135	9	150	10	135	11
Middleboro Little League	579	48*	624	50	650	50	700+	58+
Middleboro Youth Softball Association	320	25	340	30	320	30	320*	30*
South Shore Softball League	-	-	-	-	135	9	135	9
Christian Women's Softball	-	-	-	-	45*	3	45*	3
Middleboro Youth Soccer Association - Spring	339	31	435	36	518	42	784	66
Middleboro Youth Soccer Association - Fall	443	38	512	43	587	50	837	70
MMC Football	-	-	-	-	135**	6**	270**	12**
Cobras Football	-	-	-	-	40	1	40	1
Totals					2962	221	3698	351
Change in Player Participation (Each 5 Year Period)						+736 Players +25.8 % Increase		
Notes: * = Estimated Value ** = Does not include cheerleading squads *** = 2008 Player / Team Projections are as determined by the respective sports leagues.								



Table 4.4-3 Projected Team Growth Impact and Future Field Requirements

Season / Description	Existing Field Use (Hours)	Projected Field Use (Hours)	Change (Hours)	Hours Required per One Field	Increase in Teams in 2008	Fields Required
Spring						
Baseball 90' (Unrestricted Use Time)	89.3	99.2	+9.9	39	+1	+1
Baseball 60' (Unrestricted Use Time)	260.4	327.6	+67.2	39	+8	+2
Softball (Unrestricted Use Time)	145.8	261.0	+115.2	39	+24	+3
Summer						
Baseball 60' (Unrestricted Use Time)	260.4	327.6	+67.2	39	+8	+2
Football (Unrestricted Use Time)	170.7	217.5	+46.3	39	+	+1 Game +1 Pract.
Fall						
Soccer (School Use Period)	81	90	+9	12.5	+1	+1
Soccer (Unrestricted Use Period)	99	198	+99	24	+21	+3
Football (Unrestricted Use Period)	96.3	143.1	+46.8	39	+6	+1 Game +1 Pract.

4.4?

2

Conclusions

The analysis indicates all sports are at or nearing full capacity during their respective prime seasons. A new Football game facility is recommended to alleviate overuse at Battis Field.

It may be possible for the Babe Ruth League to incorporate the one expected new Baseball 90' team into their existing schedule, without the need to construct the new baseball diamond indicated in Table 4.4-3.

The new soccer field identified during the School Use Period can likely be accommodated at one of the existing facilities as the bulk of the practice is before the evening recreational leagues compete for field time. Transportation for the team may be necessary. However, any weekend games must fit into an already tight schedule.

Putting the two resting fields online eliminates the need for some new construction required for projected soccer expansion during the Unrestricted Use Period. However, the overall soccer field system will suffer when the fields are unable to rest.

2

The remaining fields identified in the table will be required to maintain future playing levels.

We recommend that town officials be on the watch for other emerging sports that may request field time. Flag Football (non-contact), recreational Field Hockey, Lacrosse and Fall Baseball/Softball Leagues that are beginning or established in some Massachusetts communities; adding league level play to fields without noticeably reducing participation rates in other sports.

Section 5.0 Existing Facilities Evaluation

5.1 Summary

Cursory review of the existing facilities recommendations is included below. A more thorough analysis is provided in section 5.2.

General comments common to many of the inventoried sites:

- Most of the inventoried facilities are non-compliant to some extent with the Americans with Disabilities Act (ADA) guidelines. The goal of the ADA guidelines is to provide handicapped citizens with "equal enjoyment of goods, services, facilities, privileges, advantages and accommodations," as well as the "right to participate and have an equal opportunity to obtain the same result as others to the extent possible." Where able-bodied spectators are provided space to cheer on sports teams, handicap patrons are to be provided a place amongst the able-bodied to experience the event in a similar way. Where children's play areas are provided, children are to be provided with accessible equipment to enjoy play experiences with other able-bodied children and handicapped guardians accessible ways to supervise them.

?
Re-word

At many of the facilities, accessibility for handicapped patrons ends at the edge of the pavement, because only inaccessible grass surfaces or gravel are provided between the parking areas and site features. Play equipment areas located within lawn areas prevent handicapped children and guardians from using them. At some sites, handicapped spectators must view games from a distance.

We recommend the installation of accessible routes of travel at each facility, that ~~includes participation and not excludes~~. Experience has shown that able-bodied patrons often prefer to use the accessible pathways, when available. The accessible pathways provide secondary benefits as well, tending to define and separate different site uses and channel patron ingress and egress. Federal regulations will require future site improvements to be accessible to both child and guardian in both use and access.

(2)

HANDICAPPED (2)

- Most of the sites lack irrigation systems and water is a key component for turf to survive. Installation of such systems will help maintain quality turf surfaces on fields that are heavily used.

The following comments summarize recommendations at specific facilities:

- Burkland School / Mayflower School / Field of Dreams Complex: make remedial repairs mentioned to equipment. The large tee ball ^{field} can be upgraded to a 200' field by relocating the existing 200' field. Install underground irrigation systems at all fields.

(2)

- High School Complex: repair backstop; install protective fences at players benches; implement a written field improvement plan emphasizing prevention; regularly aerate and slice seed turf areas; add new equipment to shorten maintenance tasks; consider regrading and reconfiguration of the baseball / soccer / field hockey area to improve play; install underground irrigation systems to maintain turf vigor; consider field expansion in the former gravel mining area as noted in Section 6.0. (D)
- Pierce Playground: make remedial repairs mentioned to equipment; replace wood poles at lower fields with chain link fence; find alternative to use of lower fields as a parking area; implement a more aggressive turf management plan to encourage turf growth on fields; consider replacement of Battis turf with a modern no maintenance synthetic turf system.
- Healey Complex: verify on the ground the limits of surrounding wetlands, in order to pursue expansion possibilities; improve definition and channeling of vehicles in the gravel parking area through the installation of wood guard rails.
- West Side Fields: make remedial repairs noted to existing equipment; no useful reconfiguration of the existing facility to increase use substantially, apply new color coating to basketball court; consider expansion of the facility as noted in Section 6.0. (D)

Pro vs. Useful life

5.2 Existing Facilities

Introduction

Weston & Sampson Engineers, Inc. visited several existing recreation facilities selected by the Athletic Playing Fields Committee. Our purpose was to assess the quantity and quality, facility condition, types of recreation experiences offered and supporting site amenities, and examine possible redesign of the facilities to maximize use. Conceptual Plans for facilities where redesign or reconfiguration opportunities exist are included in Appendix E.

The following facilities comprise the sites selected by the committee for evaluation:

1. Burkland School / Mayflower School / Field of Dreams
2. High School Complex
3. Pierce Playground
4. Healey Soccer Complex
5. West Side Fields

Burkland School / Mayflower School / Field of Dreams

The site is located between East Grove Street (State Route 28) and Mayflower Avenue. The neighborhood is a mixed commercial and residential area. An overhead utility corridor and the Nemasket River bound it on the East side. Several small-localized wetland resource areas appear to exist on the south side.

The complex is composed of two functioning public schools, Burkland and Mayflower, and the Field of Dreams Athletic Complex, which abuts East Grove Street. Recreational resources at the site consist of the following:

Three (3) 60' Little League Diamonds; only one of which is lighted. The lighted field was constructed with ideal North-Northeast orientation. Two of the fields appear to be recently constructed.

Three (3) Tee Ball fields used for baseball. The larger of the three tee ball fields requires repairs to the baseball backstop. The infield on the field on the far side of the site is small and substandard.

One (1) lighted Soccer Field. The field just completed a complete turf renovation.

Play equipment areas for use during school recess.

The turf on the three fields associated with the "Field of Dreams" complex stands as a model of what quality athletic field turf can be. Indeed the turf is among the best of any field in Massachusetts. The surface is lush, green, thick and well cared for. Every effort should be made to duplicate the results on these fields at the remaining town facilities. The fields are fully irrigated.

The turf at the remaining 60' diamond appears much less perfect than the adjacent Field of Dreams fields, but appeared in good condition on the day of our visit. Several bare spots were noted in the outfield. Some field users rate the turf as only fair, which may mean that in dry weather, the turf does not perform well.

A concession and restroom facility exists at the Field of Dreams complex.

Handicap accessibility is poor at the complex, due to the many gravel parking areas and walkways.

Recommendations:

- Repair fences and backstop at the larger tee ball field.
- If the older 60' diamond is relocated to the west, eliminating the existing gravel parking area, it appears that the larger tee ball field could be replaced by a fourth 200' outfield diamond.
- The far west tee ball field should be upgraded to a standard size infield for better incorporation into the league schedule. If the lawn drainage swale were piped underground, the large turf area directly in front of the tee ball could be redeveloped into several good small side soccer pitches or tee ball fields. As players at that level cannot hit far.
- As new improvements are made at the complex, incorporate Handicap accessibility elements to comply with current standards.
- Install underground irrigation systems at all fields as time and funding permit to allow all fields to look like the field of dreams.

High School Complex

The site is located on East Grove Street (State Route 28) and is in close proximity to the Fields Of Dreams Complex. The site is bounded by an Interstate 495 Motorist rest area and an abandoned gravel mining area on the South; the Nemasket River, some related wetlands and commercial properties on the West; East Grove Street and commercial properties on the North; and residential housing and a privately owned wooded area on the East.

A FEMA Flood Insurance Zone, a 100' Wetland Buffer Zone, and a 200' River Protection Zone exists to the West along the property line adjacent to the river. However, they exist well away from any existing or potentially developed areas on site.

The site contains three softball fields. A lack of paved pads under players benches in dugout areas, creates mud bowls to pond rain water and increases maintenance. The infield mixture at the field to the far South of the site washes out, because the field is built at the natural low point of the site, where all storm water from the adjacent fields concentrates before running off into the gravel pit. Regrading the field best solves the problem. One of the fields is built on top of a large plateau overlooking the baseball field. The 200' limit for softball ends at approximately the top of the slope, causing home runs to roll down the hill.

A 90' baseball diamond occupies the center of the field complex. The backstop is damaged, requiring repair or replacement. The players benches lack protective fences or paved pads beneath. The field hockey field (left field) and soccer field (right field) share the outfield area.

The field hockey and soccer areas appear too steeply sloped, due to site grading. Town aerial mapping plans indicate a 5-6 foot elevation difference between the ends of the field, which is greater than recommend. Some users find the space unsuitable for game play.

The school running track with grassed football practice area is located East of the baseball field. The track surface appears in good working order. Aerial photographs show severe wear areas in the spring from the fall football practice.

A six court tennis complex is adjacent to the track. The area appears in good working order.

A full court basketball area occupies the space between the parking lot and the maintenance shed. Several large weed filled cracks can be seen in the pavement, which require repairs.

Because of the rainy season this year, the field turf area appeared lush and green with large mottled dark and light greens areas. The lighter green patches appear to be narrow leaf weed species of grass mixed into the turf. These can sometimes be an indicator of compacted field soil and turf, which is remedied by turf aeration and regular slice reseeded. During the dry summer months, these weed grasses usually brown out early, presenting a hardened surface to athletes using the field. Some users of the High School complex rated the turf quality as poor to fair.

Reconfiguration of the baseball, back softball, field hockey, and soccer fields would permit the soccer and field hockey area to sit higher on the sloping land, allowing for the preferred side to grading. This would allow the fields to be used for game and practice play. To achieve this, the softball field would be relocated to the small wooded grove of trees beside the maintenance shed.

The complex presents visitors Handicap access problems for spectators arriving to watch games.

The gravel mining area presents new field development possibilities, which are discussed in Section 6.0.

Recommendations:

- Implement repairs to the baseball backstop.
- Provide protective fencing at all players benches where absent.
- Repair cracks in the basketball court pavement.
- Develop and implement a strict written maintenance plan for the field turf, emphasizing prevention. Add new equipment as appropriate to shorten time needed to perform repetitive maintenance tasks, allow maintenance personnel more time to improve the turf. Regularly reseed and aerate the all turf areas.
- Consider reconfiguration of the fields as mentioned above to solve grading problems and allow better play on the soccer and field hockey fields.
- Install an in ground irrigation system to keep the fields at their prime.

Pierce Playground

The site is located on Jackson Street, just outside of the central business district. The neighborhood is primarily populated with commercial establishments, with some private residences to the North. The site is bounded by a public school on the East and the Nemasket River on the West.

Hilly best describes the topography of the site. The site elements are constructed on a series of terraces within a long slope leading to the Nemasket River.

Site features include: three softball fields; one formal and two informal tee ball fields; one 90' baseball field; the Battis football field and wood structure stadium; an open air public swimming pool and bathhouse; concession stand; park headquarters building; two play areas; two basketball courts; four shuffle board courts; a four court tennis complex; paved parking area; a bandstand; and a skateboard park.

The upper ball fields appear to be well maintained, with only some minor problems. Some of the player benches are set higher than normal and others lack protective fencing. Chain link fence fabric at all the backstops at the 90' baseball / tee ball area are torn, bent or damaged, requiring repair. The turf contains some areas of narrow leaf weed species and clover.

The lower softball fields are widely spaced, allowing football practice in the joint outfield. This perimeter of the lower area is ringed with 2-3 foot high wood utility posts, presumably installed to keep cars within the field area, when it is used for Cobra football

game parking. The posts seem to perform no function, as some are wide enough to drive a vehicle through, while presenting a hazard to game players running into them unaware. They also prevent the adjacent grassed slope from being use for winter sports by children. Turf quality at the lower fields is fair to poor. The soil is compacted and bare spots exist, one large area in center appears left over from last year's football practice. Large puddles form in the worn areas under the player benches after rainstorms.

The Battis football field looks to be in good condition. However, the turf is much thinner in many places than preferred for the start of football season, when inspected in mid-August. Field irrigation is accomplished with large water cannons only; no in ground irrigation system exists. Field users complain of deep ruts wearing into the sidelines during the football season.

Battis field users think the field is over used. Four football clubs use the field for all game play.

The adjacent wood bleacher system appears in good working order.

The shuffleboard courts seem somewhat out of fashion today. Development of a bocce court may better serve park patrons and possible area bocce leagues.

The parking lot is cracked and uneven in places, but serviceable. A few extra paved spaces could be added behind the baseball field to increase capacity.

The tennis court is in good condition and the upper play area is brand new. The lower play area is functional, but not handicap accessible.

The lower basketball court has some cracks and large holes in the pavement, making play here unsafe.

The Skateboard Park contains many deep puddles after a rain, leaving the area unusable for many hours after.

Support posts and other surfaces on the bandstand are chipped or broken and require repair.

Recommendations:

- Make remedial repairs to the fences, backstops, and other locations noted above.
- Remove wood posts from the lower fields and replace with a chain link fence on the riverside of the field.
- Halt the parking of cars on the lower ball fields, this practice compacts and damages soil and turf areas to a great extent. Open the large gates on the South side of the football field, after making arrangements with area businesses to utilize unused spaces outside of the park, during game events.

- Patch holes in the lower basketball court.
- Install an asphalt-leveling course on the skateboard park pavement to eliminate puddles.
- Implement a more aggressive turf management plan to encourage plant growth and remove weed species of grass.
- At this time we think too many ball clubs use Battis field and recommend finding alternate game spaces, building a new field is one option. Another option is the installation of a synthetic turf field at Battis. This would provide perfect play conditions year round, with little maintenance. Game scheduling can even be increased at the field under this alternative.
- Install temporary football sideline protective coverings to minimize rutting and damage to turf.

Healey Soccer Complex



The site is located on Purchase Street on the West side of town, near the Carver town line. Heavily wooded areas bound the site on the North by residential housing and on the remaining sides. Access to the site is via a long narrow gravel driveway, between two residential properties.

Site features include: three full size soccer fields, a concession stand, restrooms, and a gravel parking area.

State wetland maps show wetland resource areas within the wooded areas beside the soccer fields, almost to the tree line, surrounding the playing fields. If an additional 50 feet can be gained by clearing a portion of the wooded areas on the South side of the complex, the two soccer fields on that side could be rotated and 1 or 2 new fields possibly added. No other reconfiguration schemes appear likely.

The gravel parking area is not well defined from the adjacent grass areas. In these situations, event parking can sometimes become haphazard as patron park as they please.

The turf quality on the day of our site visit was outstanding. Like some of the turf areas at the Field of Dreams complex, it is a model of what athletic turf can be. The town should apply the practices used at these fields to the other fields in place. The turf is lush, green, relative weed free, well graded and pitched.

The site lacks paths and other amenities making access friendly to handicapped patrons.

Recommendations:

- Confirm the limits of wetlands surrounding the site with the goal of expanding the playing area slightly.
- Improve site ADA compliance and handicap accessibility.
- Install wood guardrails around the parking lot perimeter to protect fields and better define the limits of parking. Using aerial mapping, four rows of stalls fit within much of the existing area. Guardrails and wood pole wheel stops will encourage more efficient use.

West Side Fields

The site is located on the corner of West End Avenue and Hathaway Street. At present, Hathaway Street exists as a gravel path between two map Right of Way lines. The neighborhood is of a suburban residential character. A perennial stream divides the site with a recently constructed group of children's play structures in the Northern portion and the field's areas in the Southern portion. A low grassed slope divides the ball field area from the upper Hathaway Street Portion of the property.

The parcel encompasses a 200 foot river protection zone, 100 foot wetland resource buffer and a FEMA Flood Insurance zone. Maps show the flood zone covering much of the field area.

The site includes: gravel parking areas, a group of new children's play structures; two 60' baseball diamonds; a large open field area, and a basketball court.

The two baseball diamonds are both unlighted. One has conversed player dugouts and grassed infield, while the other has chain link fencing only at the players benches and a skinned infield. One of players benches on the skinned field is broken and requires repair. Chain link fencing surrounds the perimeter of both fields. An underground irrigation system exists at the grassed infield diamond.

The turf at the open field area to North of the baseball diamonds is more of a frequently mown meadow grass than an athletic turf. It is sparse in places and of coarser nature than the baseball turf. We observed standing water within the woods to the North, which is probably spill over from the pond located to the North.

On the day of our visit, large deep puddles were observed between the two baseball outfield fences and the low grass slope that separate the fields from the Hathaway Street portion, extending partway in the outfield turf.

Access to the skinned baseball field is from the gravel parking area along West End Avenue. Patron access to the other field is from an informal parking area on upper Hathaway Street level.

No visible cracks exist in the basketball court pavement, but the surface appears worn and needs new color sealcoating. The basketball standards are also worn and lack nets. Access and visibility of the court from the Street is poor.

Pedestrian and vehicle access at the site appear haphazard, unchanneled, and unplanned. None of the site features are handicap accessible.

Recommendations:

- Wetland and other environmental issues prevent and useful reconfiguration of the existing baseball fields. The outfield fences could be removed and major improvements to the meadow area to the North made to allow a multi-field / sport use.
- Repair the players bench areas.
- Improve definition of the parking areas to indicate the intended parking scheme to park patrons.
- Implement improvements to the access to the site features accessible and friendly to handicapped patrons.
- Apply new color sealcoat to the basketball court. Make repairs to the nets.
- Park expansion opportunities exist for this site and are discussed in Section 7.0 of this report.

Section 6.0 Facilities Expansion Evaluation

6.1 Summary

The following is a cursory review of the recommendation outlined in Section 6.2.

Council on Aging / Church of the Green: Two potential development areas exist at this site, but all on the privately owned parcels. The site is especially attractive for the construction 1-2 lighted football fields. Moderate to steep slopes in places will require some substantial earthwork.

Green School House: We do not recommend development of the site for field use. Due to wetland and slope constraints, the area able to be developed is too small to contribute substantially to the recreation mix within town.

Healey Complex: No further development is possible at this site, unless field verification of the wetland limits add additional developable land to the site. Expansion possibilities for this site are discussed in greater detail in Section 6.0.

High School Complex: We recommend acquisition of the necessary portion of the adjacent private parcel to permit development of the former gravel mining area into addition town recreational fields. Development of a more premier type soccer and Field Hockey Stadium is our preferred development scenario.

Plymouth Street Property: We cautiously recommend development of some type of athletic facility at the site; only after comprehensive wetland identification is completed. Potential space exists for a combination of medium and large size athletic fields. Development here has the advantage of no additional land acquisitions.

Tispaquin Street & Chestnut Street Properties: It is unfortunate that area residents have opposed past recreation development plans for *Tispaquin* site. Of all the sites evaluated, this is the most easily and cheaply constructed site for a variety of uses and an obvious first choice. We recommend development of this site for athletic use. X

We would recommend development of the *Chestnut* site, after further investigations to determine conservation restrictions / penalties for development and existence / extents of any wetland land areas. The site has the potential to be an outstanding recreation complex. X

West Side Fields: We recommend acquisition of the private parcels and development of an expanded recreation facility here with a lighted football field.

The High School Complex expansion, the Tispaquin site, and the West side Fields stand out as first choice opportunities for new field spaces. In a close second place, the Council on Aging / Church of the Green site offer additional football fields, in an area where few

will be disturbed. The remaining sites are not recommended or require additional study to make a final determination.

6.2 Site Evaluations

Introduction

Weston & Sampson Engineers, Inc. visited several town owned land parcels selected by the Athletic Playing Fields Committee to assess the suitability of each parcel for the construction of new athletic fields within town. Some of the parcels require the acquisition of privately owned land to make development of a new facility feasible. Conceptual Plans for parcels discussed in this section are included in Appendix E.

and privately owned parcels

The following properties comprise the sites selected by the committee for evaluation:

1. Council on Aging / Church of the Green
2. Green School House
3. Healey Complex
4. High School Complex
5. Plymouth Street Property
6. Tispaquin Street & Chestnut Street Properties
7. West Side Fields

Evaluations & Recommendations

Council on Aging / Church of the Green

This site is really a group of town and privately owned parcels located between Plymouth Street, Plympton Street, and U.S. Route 44. The site is heavily wooded with dirt paths meandering through, used mainly by off road vehicles and motorbikes. The topography is hilly and rolling with some slopes, as the town aerial maps show. The parcels reviewed are Nos. 3811, 2951, 3016, 3025, 2293, 2368, and 3099 on Tax Map 42.

The parcels roughly can be categorized into two groups separated by a long parcel appearing as an old rail or road Right of Way (ROW). The group South of the ROW parcel is composed of two large properties, the existing Council on Aging (COA) facility and a wooded area owned by the adjacent church. The group North of ROW parcel is composed of several long thin properties, some of which are contiguous with Route 44 and Plympton Street.

Parcel 2951 was eliminated from consideration, as it is composed almost entirely of wetlands and FEMA Flood zones according to available mapping. Parcel 3811, the COA land directly North of the parking lot is too small for field development, but large enough for additional parking spaces, if necessary.

Two areas of development were chosen, all on privately owned parcels, one at the church owned parcel 3099 (South site) and another using parcels 3025, 2293, and 2368 (North site).

In our opinion, only the Southern half of the South Site is attractive for field development. The North portion of this parcel has huge elevation changes, in excess of 35 feet. About a 200' x 350' wide swath could be carved out of the hill, if desired, at the expense of trucking away material. The Southern portion is flat enough to easily construct two 200' diamonds / shared use soccer and parking, without disturbing the adjacent hillside. The parking can be developed nearest Plympton Street side of the land, where access is easy.

The Northern site is attractive, because of its proximity to Route 44 and location at the foot of a steep slope. The combined parcels width is enough to construct several 200' diamonds or the preferred scheme of 1-2 lighted football fields. The site has good potential for lighted football field construction, as site has virtually no direct residential abutters to be disturbed by light spill, and the parcel is situated next to a noisy and busy major highway with bright vehicle headlamps passing regularly. Good site access is available from Plympton Street.

Construction costs for these sites will be higher than some of the other choices, because of the potential earthwork involved. We would recommend construction of either project, as they will both support various types of athletic fields, but would encourage the football field options at the Northern site (strongly).

Green School House

This site, Parcel 4844, is a 7.2-Acre Parcel located on the corner of East Main Street and Wood Street. The neighborhood is almost entirely residential. A small painted green wood frame one-room schoolhouse exists at the Northeast corner of the property. The portion of the site under consideration for field development appears as a former gravel mining area. The Town currently uses the site to dump organic debris. *is used for sledding in the winter.*

The site has several features that severely constrain development. A perennial stream with several tributary drainage ways crosses the site, which available mapping suggest contain extensive wetland resource areas. The wetland buffer, drawn based on available general statewide mapping, seems closer to the tree line than depicted. A large slope exists on the Southeastern edge already cut back to a point near the property line, which limits further expansion of the developable area.

We do not recommend development of the site for field use. Due to wetland and slope constraints, the area able to be developed is too small to contribute substantially to the recreation mix within town.

Healey Complex

No further development is possible at this site, unless field verification of the wetland limits add additional developable land to the site. Expansion possibilities for this site are discussed in greater detail in Section .0.

High School Complex

The High School expansion parcel consists of the town and privately owned portions of the former gravel mining area to the South of the baseball field and adjacent to Interstate 495. Acquisition of a portion of the private parcel will be necessary to accomplish substantial development gains.

The site is bounded on ^{the} West by the Nemasket River, which contains wetland resource areas, FEMA Flood Insurance Zone, 200' river protection zone, and wetland buffer zones. However, these are far enough away to generally avoid any disturbance there.

The area to be developed lies at the bottom of a steep slope beyond the baseball outfield. Bare patches of gravelly material and scrub trees and shrubs characterize the existing topography. The land is generally level, but a moderate slope exists in the wooded area to the Eastern side of the gravel private parcel.

The concept plan included in Appendix E, illustrates that a full size soccer field, small practice field, and companion stadium seating built into the hillside can be accomplished. The most difficult aspect of the project is providing suitable handicap accessibility. After overcoming development obstacles, the site could become a premier athletic venue to rival Battis Field. Ample parking is available in the school parking lots after school hours and the nearby Burkland / Field of Dreams complex could be used with shuttles for large events.

Although we did not explore the option in depth, a full size soccer field could also be easily built on the wooded private parcel adjacent to the tennis and track area. The land is somewhat level and at a similar elevation to the nearby track area. **THIS LAND IS OWNED BY THE BOSTON DIOCESE OF THE CATHOLIC CHURCH.**

We recommend acquisition of the necessary portion of the adjacent private parcel to permit development of the former gravel mining area into addition town recreational fields. Development of a more premier type soccer and Field Hockey Stadium is our preferred development scenario.

Plymouth Street Property

This site, town owned parcel 2168 of Tax map 19, is a 42.3-Acre property located on Plymouth Street, in the North Middleborough section of town. Woods and residential homes abut the parcel. A free flowing stream, tributary to the nearby Otis Pratt Brook, divides the site. The topography is generally very flat and vegetated with a mixed pine-hardwood forest canopy. The parcel is conveniently located near State Routes 18 and 28.

Development of the site in any way is contingent upon a complete and thorough identification of the wetland resource areas on the parcel. On the ground observation shows the portions of the site to be very flat, which may enlarge the wetland land areas due to poor drainage and hydric soils, and some large rocks scatter infrequently. The concept plan in Appendix E indicates where the statewide mapping suggests wetlands may exist, which is approximately over half of the site.



Therefore, the concept plan shows a modest amount of development within the Northern portion. Two 60' diamonds, a full size soccer field, children's play area, and parking facilities are proposed for the site. The parking is laid out similar to the Healey Complex, in order to keep the noise of entering and exiting cars at a comfortable distance from the nearby homes.

We cautiously recommend development of some type of athletic facility at the site; only after comprehensive wetland identification is completed. Potential space exists for a combination of medium and large size athletic fields. Development here has the advantage of no additional land acquisitions.

Tispaquin Street & Chestnut Street Properties

The evaluated properties are comprised of sites in two different areas, both along Chestnut Street.

The first site, the *Tispaquin* property, consists of ~~the~~ two town owned properties, parcels 1077 and 2531 and privately owned parcel 3415, all on Tax map 61; located at the corner of Chestnut Street and Tispaquin Street. Suitable site development is not contingent on acquisition of the privately owned parcel. However, purchase of the parcel allows construction of large field areas in the most easily developed area. The concept plan in Appendix E illustrates field placement after this manner.



The topography of the site is relatively flat and easy to work. It is forested with a pine-hardwood mix. Occasional large boulders are visible at the site. Due to the extensive wooded areas, the neighborhood has a more quiet rural feeling than in some other area of Middleborough. The available statewide mapping shows no wetland resource areas on site.

Concept Plans with and without Private Parcel

In the concept plan, site access and parking are shown connecting to Tispaquin Street, but could ~~be~~ easily be modified to access Chestnut Street. The site is spacious enough to accommodate several large fields (full size soccer or 90' baseball), if required.



Optionally, development can be scaled down to a smaller quantity of fields, constructed in the Southwest corner of the site, leaving generously wide swaths of buffer forest areas between the fields and neighboring homes.

The concept plan shows the possible development of two full size soccer fields and a combination 60' diamond / shared use soccer field. However, a wide variety of field sizes can be constructed on the site.

~~It is unfortunate that area residents have opposed past recreation development plans for this site.~~ Of all the sites evaluated, this is the most easily and cheaply constructed site for a variety of uses and an obvious first choice. We recommend development of this site for athletic use. (C)

The *Chestnut* site, town owned parcels 4743 on Tax map 52, ^{town owned} parcels 4112 and 3685 on Tax map 53. Parcel 4743 is under control of the town conservation commission, ~~presumably as Chapter 61 conservation restricted land.~~ The three parcels also abut Chestnut Street and Tispaquin Street, but at widely spaced distances. (✓)
(w)

The site is a mostly hardwood forested area with occasional isolated lands subject to flooding. Extensive wetland areas were not obvious during our site visit. Cranberry bog farms bound the site on the North, while the remaining sides are heavily wooded with isolated residences.

An advantage of development of this site is that field areas will exist far from the abutting residential areas. The concept plan included in Appendix E illustrates a conservative approach to site development. The wetland limit and buffer are best guesses based on the proximity of the cranberry bogs and simple site observations. The statewide mapping does not indicate any wetland areas within the site. The concept plan proposes the construction of several multiple field areas with parking interspersed throughout.

In the absence of additional data, it is possible that large areas are available to construct multi-field complexes, with thick-forested buffers between the fields and adjacent residences.

We would recommend development of the Chestnut site, after further investigations to ~~determine conservation restrictions / penalties for development and existence / extent~~ of any wetland land areas. The site has the potential to be an outstanding recreation complex. (C)

Steps needed to remove the land from Conservation Commission ~~able, custody and control~~

West Side Fields

The West Side Fields expansion site consists of a mix of privately owned land and town owned paper street rights-of-way. The neighborhood character is that of a suburban residential area. The site is directly adjacent to the existing upper informal parking area, field complex and basketball court, appearing as an open meadow with tall grass.

Although several environmental issues are connected with the lower fields area, the expansion area exists at an elevation 6-10 feet higher and well away from the river and wetland buffers. The area may still be included in the FEMA Flood Insurance Zone calculated by the government. A special change to the flood map may be required to construct without restriction.

pond and stream

The conceptual plan included in Appendix E illustrates the development potential for the site. The existing informal upper parking area would be formalized with paving and guardrails. Two 60' diamonds or, under our preferred scheme, one lighted football field would be constructed next to the parking area. Pedestrian pathways, located within the paper street rights-of-way give neighborhood residents in many directions easy access to the new park.

(2)

We recommend acquisition of the private parcels and development of an expanded recreation facility here.

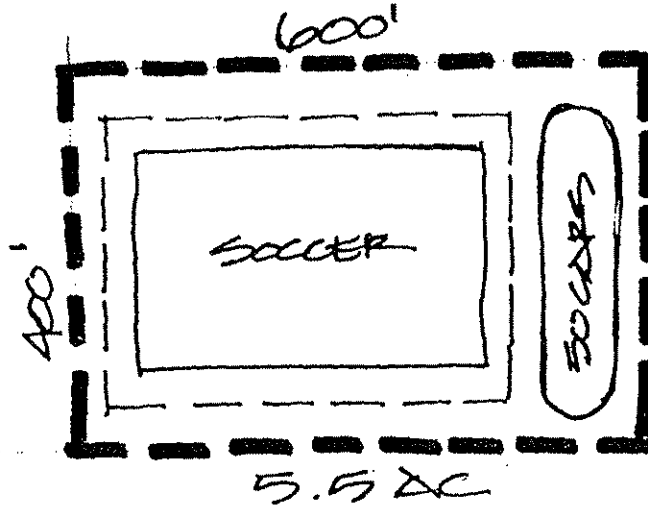
Conclusions

The High School Complex expansion, the Tispaquin site, and the West side Fields stand out as first choice opportunities for new field spaces. In a close second place, the Council on Aging / Church of the Green site offer additional football fields in an area where few will be disturbed. The remaining sites are not recommended or require additional study to make a final determination.

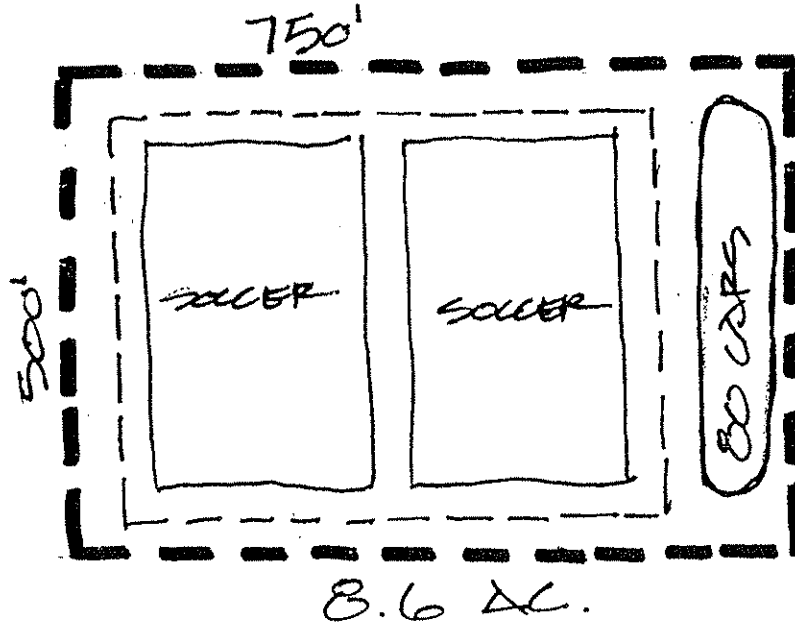
(2)

6.3 Athletic Field / Facility Templates

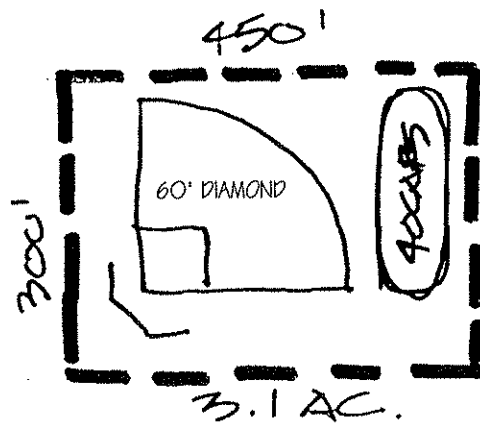
For planning purposes only, the templates below are provided to indicate the approximate land sizes required to develop simple recreation facilities and fields.



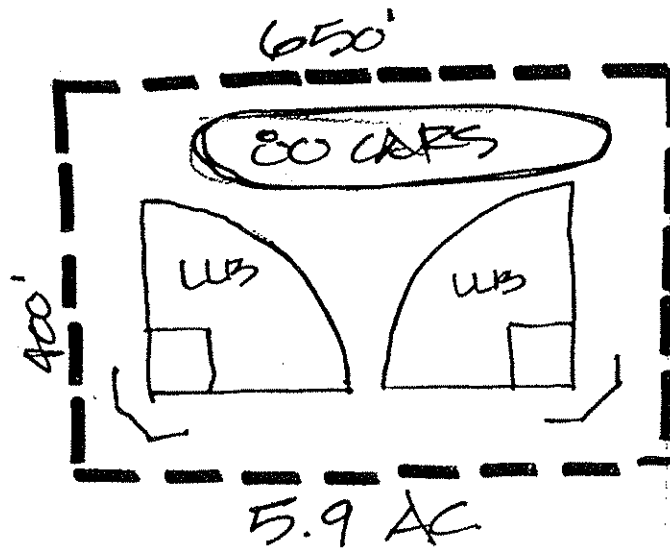
Template 1 - One Championship Soccer Field with Parking.



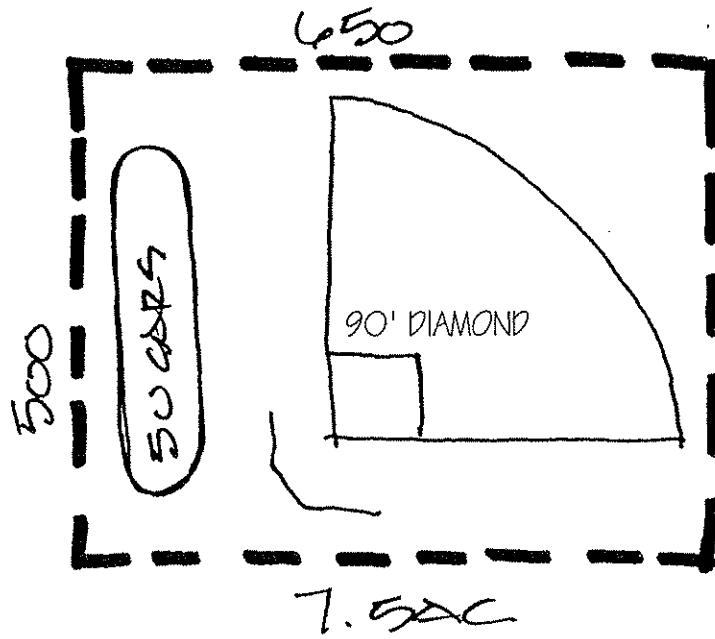
Template 2 - Two Championship Soccer Fields with Parking.



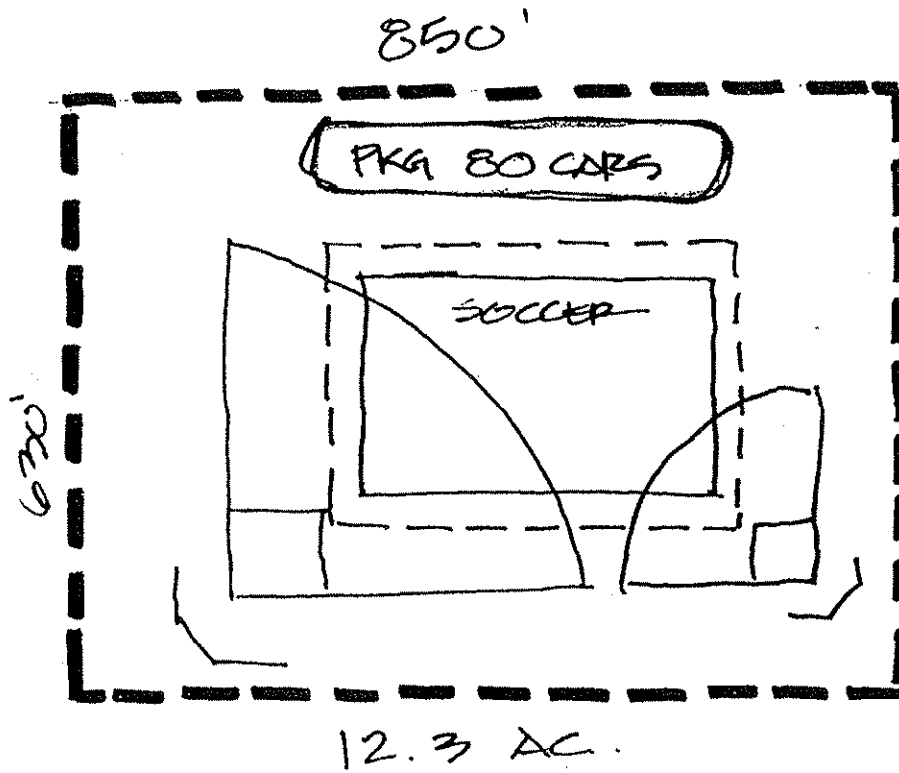
Template 3 - One 60' Diamond with Parking.



Template 4 - Two 60' Diamonds with Parking.



Template 5 - One 90' Diamond with Parking.



Template 6 - Multi-Use Field including 90' Diamond, 60' Diamond, Championship Soccer Field, and Parking.

Section 7.0 Maintenance

Field observations and comments included in the field user survey forms indicate that the quality and appearance of turf and playing fields currently in use are variable in their condition. The variability exists within both the School sites and the town park sites. Survey respondents rated maintenance at some sites as good, while others were judged as fair to poor.

A major factor contributing to the variable condition among town fields is a lack of on-site irrigation. The Field of Dreams turf, which appears lush and green well into Fall, has an extensive irrigation system in place to maintain a quality turf. Adequate watering allows the field turf to more easily repair itself after wear and damage. Play on fields, where turf is stressed due to insufficient water, is damaged much more easily and extensively during game events, while healing takes significantly longer. We recommend implementation of a field improvement program to install irrigation systems at all town fields to keep fields in their best condition. The water cannons used on some fields may not deliver water to thirsty turf with the precision and frequency to keep fields in tiptop shape.

Another factor contributing to the variable field condition appears to be varying levels of maintenance from field to field. Some fields show evidence of low spots, bare spots or other turf problems making play difficult, while others appear smooth, lush and green. In order to minimize adverse field conditions due to maintenance issues, we recommend that all fields be maintained to the following industry standards listed below.

The standards need to be codified into a written plan to govern maintenance operations that all field maintenance personnel use and reference. The plan should be supported by sufficient labor saving equipment to allow implementation of all aspects of the plan.

Soil Testing: Perform at least once every three to five years. This allows fertilization to be tailored to each field's individual needs.

Fertilization: Fertilizers should be applied mid spring, early June, mid September, late October, and mid to late December.

Aeration: In late March to early April, after school is out in June, and in late August before Fall School sports begin. Aeration reduces hardness and compaction of soil, allowing roots to breathe and grow more easily, and making turf more resilient for falling players.

Mowing: Weekly March through October, as needed October to November. Turf maintenance professionals emphasize that mowing schedules should not be reduced when fields are resting or otherwise inactive, to ensure thick vigorous growth.

Irrigation: 1" per week.

Lime: As needed to maintain a ph of 6.0-6.7.

Seeding: Applied between mid August and mid September.

Field Lining: Before each game or as needed.

Baseball Infields: Sand and calcined clay should be worked into clay-skinned infields as required.

Pest Control: Any problems detected should be resolved using cultural practices. In practice, fields treated with pesticides to correct insect problems must be taken out of play to avoid contact with players and children, which will require extra fields to relocate game play to.

Excess Thatch Removal: Performed in June when soil is dry.

Rolling: Perform three (3) times per year when the ground is soft. This will assist to keep the turf from becoming uneven and lumpy, increasing player safety.

Appendix A

Summary of Scheduled Time Per Week Per Field

Note: Times shown are for all scheduled uses, not just indicated sport.

Field	Spring	Summer	Fall	Comments
BASEBALL 90'				
High School Baseball #0'	54.0	32.0	53.0	
Pierce Baseball #0'	51.5	51.5	0.0	
Nichols Baseball #0'	49.0	0.0	0.0	
Average Total Hours Per Week	154.5	83.5	53.0	
BASEBALL 60'				
F.O.D. Baseball #1 Memorial Field	55.0	46.0	25.0	
F.O.D. Baseball #2 Community Field	46.5	22.9	0.0	
F.O.D. Baseball #3 Michael's Field	44.5	30.5	0.0	
West Side - Front Baseball	46.5	22.5	0.0	
West Side - Back Baseball	46.5	22.5	0.0	
VFW - Gauthier Field	46.5	22.5	0.0	
Average Total Hours Per Week	285.5	166.9	25.0	
TEEBALL ONLY				
Pierce Tee Ball	6.0	30.0	17.5	
F.O.D. Tee Ball #1	41.5	12.5	0.0	
F.O.D. Tee Ball #2	41.5	12.5	0.0	
F.O.D. Tee Ball #3 (Practice Only)	0.0	0.0	0.0	
Average Total Hours Per Week	89.0	55.0	17.5	
SOFTBALL				
High School Softball #1 (Varsity)	43.0	15.1	25.0	
High School Softball #2 (Front Field)	38.5	9.0	0.0	
High School Softball #3	38.5	9.0	0.0	
Pierce Softball #1	27.3	22.3	13.9	
Pierce Softball #2	28.3	5.8	12.3	
Pierce Softball #3	26.5	38.0	17.5	
Nichols Softball	24.0	3.1	0.0	
Average Total Hours Per Week	226.2	102.3	68.8	

Summary of Scheduled Time Per Week Per Field

Note: Times shown are for all scheduled uses, not just indicated sport.

Field	Spring	Summer	Fall	Comments
MULTI-USE SOCCER/EIC				
High School Soccer Field				Because of a "Shared Field Condition", Time for this activity is shown under: High School Baseball 90'
High School Field Hockey Field				Because of a "Shared Field Condition", Time for this activity is shown under: High School Baseball 90' & Softball Fields
Battis Field	0.0	30.0	15.7	
Healey/Purchase St. #1	42.5	0.0	42.5	
Healey/Purchase St. #2	42.5	0.0	42.5	
Healey/Purchase St. #3 (Resting Field)	0.0	0.0	0.0	
Field of Dreams (F.O.D.) Soccer	42.5	42.5	42.5	
Nichols Soccer	0.0	0.0	32.0	
West Side Multi-Use Soccer	0.0	0.0	0.0	
Average Total Hours Per Week	127.5	72.5	175.2	
FOOTBALL				
Battis Field				See Soccer Fields Above
High School Football Practice/Track	16.9	15.0	15.0	
High School Baseball Outfields				Because of a "Shared Field Condition", Time for this activity is shown under: High School Baseball 90' & Softball Fields
Pierce Softball #1				Because of a "Shared Field Condition", Time for this activity is shown under: Pierce Softball Fields Above
Pierce Softball #2				Because of a "Shared Field Condition", Time for this activity is shown under: Pierce Softball Fields Above
Pierce Softball #3				Because of a "Shared Field Condition", Time for this activity is shown under: Pierce Softball Fields Above

Notes:

1. Times shown are for all scheduled uses, not just indicated sport.

Rev: 28 July 2003

G:\Transportation\Middleborough\Master Plan\field study report Docs\Prelim analysis-Revised 6SEP03\Time Scheduled by field.xls\Summary by week

Summary of Scheduled Time Per Season Per Field

Note: Times shown are for all scheduled uses, not just indicated sport.

Field	Total per Year			Comments
	Spring	Summer	Fall	
BASEBALL 90'				
High School Baseball 90'	648	256	424	1116
Pierce Baseball 90'	618	103	0	721
Nichols Baseball 90'	588	0	0	588
BASEBALL 60'				
F.O.D. Baseball #1 Memorial Field	660	230	25	915
F.O.D. Baseball #2 Community Field	588	183	0	741
F.O.D. Baseball #3 Michael's Field	534	183	0	717
West Side Front Baseball	558	135	0	693
West Side Back Baseball	558	135	0	693
VEW - Gauthier Field	558	135	0	693
TEEBALL ONLY				
Pierce Tee Ball	72	240	140	452
F.O.D. Tee Ball #1	498	75	0	573
F.O.D. Tee Ball #2	498	75	0	573
F.O.D. Tee Ball #3 (Practice Only)	0	0	0	0
SOFTBALL				
High School Softball #1 (Varsity)	516	121	200	837
High School Softball #2 (Front Field)	462	72	0	534
High School Softball #3	462	72	0	534
Pierce Softball #1	328	178	167	673
Pierce Softball #2	340	46	148	534
Pierce Softball #3	318	304	140	762
Nichols Softball	288	25	0	313

Summary of Scheduled Time Per Season Per Field

Note: Times shown are for all scheduled uses, not just indicated sport.

Field	Total per Year			Comments
	Spring	Summer	Fall	
MULTI-USE SOCCER/EIC				
High School Soccer Field	See High School Baseball 90'			
High School Field Hockey Field	See High School Baseball 90' & Softball Fields			
Battis Field	0	240	188	428
Healey/Purchast St. #1	510	0	340	850
Healey/Purchast St. #2	510	0	340	850
Healey/Purchast St. #3 (Resting Field)	0	0	0	
Field of Dreams (F.O.D.) Soccer	510	85	340	935
Nichols Soccer	0	0	32	32
West Side Multi-Use Soccer	0	0	0	0
FOOTBALL				
Battis Field	See Soccer Fields Above			
High School Football Practice/Track	203	60	180	443
High School Baseball Outfields	See High School Baseball 90' & Softball Fields			
Pierce Softball #1	See Pierce Softball Fields Above			
Pierce Softball #2	See Pierce Softball Fields Above			
Pierce Softball #3	See Pierce Softball Fields Above			
Total Hours	10795	2953	2664	16200

Field: High School Baseball 90'

MONTH	Week	Description	Week Day Hours Used	Weekend Hours Used	Total Hours Used per Week	Comments
Jan		Idle				
Feb		Idle				
March	1	Idle				
	2	Idle				
	3	Idle				
	4	Idle				
April	1	M-F 2-5 PM MHS Baseball; M-F 5-8 PM Babe Ruth; Sa & Su 8 AM-8 PM Babe Ruth/MHS Baseball	30	24	54	
	2	M-F 2-5 PM MHS Baseball; M-F 5-8 PM Babe Ruth; Sa & Su 8 AM-8 PM Babe Ruth/MHS Baseball	30	24	54	
	3	M-F 2-5 PM MHS Baseball; M-F 5-8 PM Babe Ruth; Sa & Su 8 AM-8 PM Babe Ruth/MHS Baseball	30	24	54	
	4	M-F 2-5 PM MHS Baseball; M-F 5-8 PM Babe Ruth; Sa & Su 8 AM-8 PM Babe Ruth/MHS Baseball	30	24	54	
May	1	M-F 2-5 PM MHS Baseball; M-F 5-8 PM Babe Ruth; Sa & Su 8 AM-8 PM Babe Ruth/MHS Baseball	30	24	54	
	2	M-F 2-5 PM MHS Baseball; M-F 5-8 PM Babe Ruth; Sa & Su 8 AM-8 PM Babe Ruth/MHS Baseball	30	24	54	
	3	M-F 2-5 PM MHS Baseball; M-F 5-8 PM Babe Ruth; Sa & Su 8 AM-8 PM Babe Ruth/MHS Baseball	30	24	54	
	4	M-F 2-5 PM MHS Baseball; M-F 5-8 PM Babe Ruth; Sa & Su 8 AM-8 PM Babe Ruth/MHS Baseball	30	24	54	

Field: High School Baseball 90'

MONTH	Week	Description	Week		Total Hours Used per Week	Comments
			Week Day Hours Used	Weekend Hours Used		
June	1	M-F 2-5 PM MHS Baseball; M-F 5-8 PM Babe Ruth; Sa & Su 8 AM-8 PM Babe Ruth/MHS Baseball	30	24	54	
	2	M-F 2-5 PM MHS Baseball; M-F 5-8 PM Babe Ruth; Sa & Su 8 AM-8 PM Babe Ruth/MHS Baseball	30	24	54	
	3	M-F 2-5 PM MHS Baseball; M-F 5-8 PM Babe Ruth; Sa & Su 8 AM-8 PM Babe Ruth/MHS Baseball	30	24	54	
	4	M-F 2-5 PM MHS Baseball; M-F 5-8 PM Babe Ruth; Sa & Su 8 AM-8 PM Babe Ruth/MHS Baseball	30	24	54	
July	1	M-F 5-8 PM; Sa & Su 8 AM-8 PM	15	24	39	
	2	M-F 5-8 PM; Sa & Su 8 AM-8 PM	15	24	39	
	3	M-F 5-8 PM; Sa & Su 8 AM-8 PM	15	24	39	
	4	M-F 5-8 PM; Sa & Su 8 AM-8 PM	15	24	39	
August	1	M-F 5-8 PM MMC Football Practice on Outfield;	15	0	15	
	2	M-F 5-8 PM MMC Football Practice on Outfield;	15	0	15	
		M-F 5-8 PM MMC Football Practice on Outfield; M-F 8 AM-10 PM & 1-3 PM MHS Soccer & Field Hockey Practice	35	0	35	
	3	M-F 5-8 PM MMC Football Practice on Outfield; M-F 8 AM-10 PM & 1-3 PM MHS Soccer & Field Hockey Practice	35	0	35	
	4	M-F 5-8 PM MMC Football Practice on Outfield; M-F 8 AM-10 PM & 1-3 PM MHS Soccer & Field Hockey Practice	35	0	35	

Field: High School Baseball 90'

MONTH	Week	Description	Week Day Hours Used	Weekend Hours Used	Total Hours Used per Week	Comments
September		M-F 2:30-5 PM Field Hockey & Soccer on Outfield; Sa & Su 9 AM - 4 PM MHS Field Hockey & Soccer Practice	12.5	14	26.5	
	1	M-F 2:30-5 PM Field Hockey & Soccer on Outfield; Sa & Su 9 AM - 4 PM MHS Field Hockey & Soccer Practice	12.5	14	26.5	
	2	M-F 2:30-5 PM Field Hockey & Soccer on Outfield; Sa & Su 9 AM - 4 PM MHS Field Hockey & Soccer Practice	12.5	14	26.5	
	3	M-F 2:30-5 PM Field Hockey & Soccer on Outfield; Sa & Su 9 AM - 4 PM MHS Field Hockey & Soccer Practice	12.5	14	26.5	
October		M-F 2:30-5 PM Field Hockey & Soccer on Outfield; Sa & Su 9 AM - 4 PM MHS Field Hockey & Soccer Practice	12.5	14	26.5	
	1	M-F 2:30-5 PM Field Hockey & Soccer on Outfield; Sa & Su 9 AM - 4 PM MHS Field Hockey & Soccer Practice	12.5	14	26.5	
	2	M-F 2:30-5 PM Field Hockey & Soccer on Outfield; Sa & Su 9 AM - 4 PM MHS Field Hockey & Soccer Practice	12.5	14	26.5	
	3	M-F 2:30-5 PM Field Hockey & Soccer on Outfield; Sa & Su 9 AM - 4 PM MHS Field Hockey & Soccer Practice	12.5	14	26.5	
November		M-F 2:30-5 PM Field Hockey & Soccer on Outfield; Sa & Su 9 AM - 4 PM MHS Field Hockey & Soccer Practice	12.5	14	26.5	
	1	M-F 2:30-5 PM Field Hockey & Soccer on Outfield; Sa & Su 9 AM - 4 PM MHS Field Hockey & Soccer Practice			0	
	2	M-F 2:30-5 PM Field Hockey & Soccer on Outfield; Sa & Su 9 AM - 4 PM MHS Field Hockey & Soccer Practice			0	
	3	M-F 2:30-5 PM Field Hockey & Soccer on Outfield; Sa & Su 9 AM - 4 PM MHS Field Hockey & Soccer Practice			0	
December		M-F 2:30-5 PM Field Hockey & Soccer on Outfield; Sa & Su 9 AM - 4 PM MHS Field Hockey & Soccer Practice			0	
	1	M-F 2:30-5 PM Field Hockey & Soccer on Outfield; Sa & Su 9 AM - 4 PM MHS Field Hockey & Soccer Practice			0	
	2	M-F 2:30-5 PM Field Hockey & Soccer on Outfield; Sa & Su 9 AM - 4 PM MHS Field Hockey & Soccer Practice			0	
	3	M-F 2:30-5 PM Field Hockey & Soccer on Outfield; Sa & Su 9 AM - 4 PM MHS Field Hockey & Soccer Practice			0	
Total Hours Used			620	496	1116	

Identified Field Users:
 Babe Ruth Baseball
 High School Baseball Team

High School Field Hockey Team
 High School Soccer Team

Field: Pierce Baseball 90'

MONTH	Week	Description	Week Day Hours Used	Weekend Hours Used	Total Hours Used per Week	Comments
Jan		Idle				
Feb		Idle				
Mar	1	Idle				
	2	Idle				
	3	Idle				
	4	Idle				
April	1	M-F 2:30-8 PM; Sa/Su 8 AM-8PM	27.5	24	51.5	
	2	M-F 2:30-8 PM; Sa/Su 8 AM-8PM	27.5	24	51.5	
	3	M-F 2:30-8 PM; Sa/Su 8 AM-8PM	27.5	24	51.5	
	4	M-F 2:30-8 PM; Sa/Su 8 AM-8PM	27.5	24	51.5	
May	1	M-F 2:30-8 PM; Sa/Su 8 AM-8PM	27.5	24	51.5	
	2	M-F 2:30-8 PM; Sa/Su 8 AM-8PM	27.5	24	51.5	
	3	M-F 2:30-8 PM; Sa/Su 8 AM-8PM	27.5	24	51.5	
	4	M-F 2:30-8 PM; Sa/Su 8 AM-8PM	27.5	24	51.5	
June	1	M-F 2:30-8 PM; Sa/Su 8 AM-8PM	27.5	24	51.5	
	2	M-F 2:30-8 PM; Sa/Su 8 AM-8PM	27.5	24	51.5	
	3	M-F 2:30-8 PM; Sa/Su 8 AM-8PM	27.5	24	51.5	
	4	M-F 2:30-8 PM; Sa/Su 8 AM-8PM	27.5	24	51.5	
July	1	M-F 2:30-8 PM; Sa/Su 8 AM-8PM	27.5	24	51.5	
	2	M-F 2:30-8 PM; Sa/Su 8 AM-8PM	27.5	24	51.5	
	3	Idle				
	4	Idle				

Field: Pierce Baseball 90'

MONTH	Week	Description	Week Day Hours Used	Weekend Hours Used	Total Hours Used per Week	Comments
August	1	/dfe				
	2	/dfe				
	3	/dfe				
	4	/dfe				
September	1	/dfe				
	2	/dfe				
	3	/dfe				
	4	/dfe				
October	1	/dfe				
	2	/dfe				
	3	/dfe				
	4	/dfe				
November	1	/dfe				
	2	/dfe				
	3	/dfe				
	4	/dfe				
December		/dfe				
		/dfe				
		/dfe				
		/dfe				
Total Hours Used			385	336	721	

Identified Field Users:
 High School Varsity Baseball
 Babe Ruth Baseball

Field: Nichols - Baseball 90

MONTH	Week	Description	Week Day Hours Used	Weekend Hours Used	Total Hours Used per Week	Comments
Jan		Idle				
Feb		Idle				
Mar	1	Idle				
	2	Idle				
	3	Idle				
	4	Idle				
April	1	M-F 2:30-5 PM NMS Baseball; M-F 5:30-8 PM Babe Ruth; Sa & Su 8 AM-8 PM Babe Ruth	25	24	49	
	2	M-F 2:30-5 PM NMS Baseball; M-F 5:30-8 PM Babe Ruth; Sa & Su 8 AM-8 PM Babe Ruth	25	24	49	
	3	M-F 2:30-5 PM NMS Baseball; M-F 5:30-8 PM Babe Ruth; Sa & Su 8 AM-8 PM Babe Ruth	25	24	49	
	4	M-F 2:30-5 PM NMS Baseball; M-F 5:30-8 PM Babe Ruth; Sa & Su 8 AM-8 PM Babe Ruth	25	24	49	

Field: Nichols - Baseball 90

MONTH	Week	Description	Week Day Hours Used	Weekend Hours Used	Total Hours Used per Week	Comments
May	1	M-F 2:30-5 PM NMS Baseball; M-F 5:30-8 PM Babe Ruth; Sa & Su 8 AM-8 PM Babe Ruth	25	24	49	
	2	M-F 2:30-5 PM NMS Baseball; M-F 5:30-8 PM Babe Ruth; Sa & Su 8 AM-8 PM Babe Ruth	25	24	49	
	3	M-F 2:30-5 PM NMS Baseball; M-F 5:30-8 PM Babe Ruth; Sa & Su 8 AM-8 PM Babe Ruth	25	24	49	
	4	M-F 2:30-5 PM NMS Baseball; M-F 5:30-8 PM Babe Ruth; Sa & Su 8 AM-8 PM Babe Ruth	25	24	49	
June	1	M-F 2:30-5 PM NMS Baseball; M-F 5:30-8 PM Babe Ruth; Sa & Su 8 AM-8 PM Babe Ruth	25	24	49	
	2	M-F 2:30-5 PM NMS Baseball; M-F 5:30-8 PM Babe Ruth; Sa & Su 8 AM-8 PM Babe Ruth	25	24	49	
	3	M-F 2:30-5 PM NMS Baseball; M-F 5:30-8 PM Babe Ruth; Sa & Su 8 AM-8 PM Babe Ruth	25	24	49	
	4	M-F 2:30-5 PM NMS Baseball; M-F 5:30-8 PM Babe Ruth; Sa & Su 8 AM-8 PM Babe Ruth	25	24	49	
July	1	Idle				
	2	Idle				
	3	Idle				
	4	Idle				
August	1	Idle				
	2	Idle				
	3	Idle				
	4	Idle				

Field: Nichols - Baseball 90

MONTH	Week	Description	Week Day Hours Used	Weekend Hours Used	Total Hours Used per Week	Comments
September	1	/d/e				
	2	/d/e				
	3	/d/e				
	4	/d/e				
October	1	/d/e				
	2	/d/e				
	3	/d/e				
	4	/d/e				
November	1	/d/e				
	2	/d/e				
	3	/d/e				
	4	/d/e				
December						
Total Hours Used			300	288	588	

Identified Field Users:
 Nichols Middle School Baseball
 Babe Ruth Baseball

Field: Field of Dreams - Baseball 60' #1 (Lighted) (Memorial Field)

MONTH	Week	Description	Week Day Hours Used	Weekend Hours Used	Total Hours Used per Week	Comments
Jan		Idle				
Feb		Idle				
Mar	1	Idle				
	2	Idle				
	3	Idle				
	4	Idle				
April	1	M-F 3-9 PM Little League Practice & Games; Sa 8 AM-8 PM MLL Games; Su 8 AM-6 PM MLL Practice or Game; Su 6 PM-9 PM MLL Games.	30	25	55	
	2	M-F 3-9 PM Little League Practice & Games; Sa 8 AM-8 PM MLL Games; Su 8 AM-6 PM MLL Practice or Game; Su 6 PM-9 PM MLL Games.	30	25	55	
	3	M-F 3-9 PM Little League Practice & Games; Sa 8 AM-8 PM MLL Games; Su 8 AM-6 PM MLL Practice or Game; Su 6 PM-9 PM MLL Games.	30	25	55	
	4	M-F 3-9 PM Little League Practice & Games; Sa 8 AM-8 PM MLL Games; Su 8 AM-6 PM MLL Practice or Game; Su 6 PM-9 PM MLL Games.	30	25	55	
May	1	M-F 3-9 PM Little League Practice & Games; Sa 8 AM-8 PM MLL Games; Su 8 AM-6 PM MLL Practice or Game; Su 6 PM-9 PM MLL Games.	30	25	55	
	2	M-F 3-9 PM Little League Practice & Games; Sa 8 AM-8 PM MLL Games; Su 8 AM-6 PM MLL Practice or Game; Su 6 PM-9 PM MLL Games.	30	25	55	
	3	M-F 3-9 PM Little League Practice & Games; Sa 8 AM-8 PM MLL Games; Su 8 AM-6 PM MLL Practice or Game; Su 6 PM-9 PM MLL Games.	30	25	55	

Field: Field of Dreams - Baseball 60' #1 (Lighted) (Memorial Field)

MONTH	Week	Description	Week Day Hours Used	Weekend Hours Used	Total Hours Used per Week	Comments
		M-F 3-9 PM Little League Practice & Games; Sa 8 AM-8 PM MLL Games; Su 8 AM-6 PM MLL Games; Su 6 PM-9 PM MLL Games.	30	25	55	
		M-F 3-9 PM Little League Practice & Games; Sa 8 AM-8 PM MLL Games; Su 8 AM-6 PM MLL Games.	30	25	55	
June	1	M-F 3-9 PM Little League Practice & Games; Sa 8 AM-8 PM MLL Games; Su 8 AM-6 PM MLL Games.	30	25	55	
	2	M-F 3-9 PM Little League Practice & Games; Sa 8 AM-8 PM MLL Games; Su 8 AM-6 PM MLL Games.	30	25	55	
	3	M-F 3-9 PM Little League Practice & Games; Sa 8 AM-8 PM MLL Games; Su 8 AM-6 PM MLL Games.	30	25	55	
	4	M-F 3-9 PM Little League Practice & Games; Sa 8 AM-8 PM MLL Games; Su 8 AM-6 PM MLL Games.	30	25	55	
July	1	M-F 3-9 PM Little League Practice & Games;	30	0	30	
	2	M-F 3-9 PM Little League Practice & Games;	30	0	30	
	3	M-F 3-9 PM Little League Practice & Games;	30	0	30	
	4	M-F 3-9 PM Little League Practice & Games;	30	0	30	
August	1	M-F 3-9 PM Little League Practice & Games; Sa 8 AM-8 PM MLL Games; Su 8 AM-6 PM MLL Games.	30	25	55	

Field: Field of Dreams - Baseball 60' #1 (Lighted) (Memorial Field)

MONTH	Week	Description	Week Day Hours Used	Weekend Hours Used	Total Hours Used per Week	Comments
		M-F 3-9 PM Little League Practice & Games; Sa 8 AM-8 PM MLL Games; Su 8 AM-6 PM MLL Practice or Game; Su 6 PM-9 PM MLL Games.	30	25	55	
	1	Idle				
	2	Idle				
	3	Idle				
	4	Idle				
September	1	M-F 4-7 PM MLL Team Tryouts; Sa 9 AM-7 PM MLL Team Tryouts	15	10	25	
	2	Idle				
	3	Idle				
	4	Idle				
	1	Idle				
	2	Idle				
	3	Idle				
	4	Idle				
November	1	Idle				
	2	Idle				
	3	Idle				
	4	Idle				
December						
		Total Hours Used	555	360	915	

Identified Field Users:
Middleboro Little League

Field: Field of Dreams - Baseball 60' #2 (Community Field)

MONTH	Week	Description	Week Day Hours Used	Weekend Hours Used	Total Hours Used per Week	Comments
Jan		/dle				
Feb		/dle				
Mar	1	/dle				
	2	/dle				
	3	/dle				
	4	/dle				
April	1	M-F 3:30-8:00, Sa 8 AM-8 PM, Su 8 AM-8 PM Little League Practice & Games	22.5	24	46.5	
	2	M-F 3:30-8:00, Sa 8 AM-8 PM, Su 8 AM-8 PM Little League Practice & Games	22.5	24	46.5	
	3	M-F 3:30-8:00, Sa 8 AM-8 PM, Su 8 AM-8 PM Little League Practice & Games	22.5	24	46.5	
	4	M-F 3:30-8:00, Sa 8 AM-8 PM, Su 8 AM-8 PM Little League Practice & Games	22.5	24	46.5	
May	1	M-F 3:30-8:00, Sa 8 AM-8 PM, Su 8 AM-8 PM Little League Practice & Games	22.5	24	46.5	
	2	M-F 3:30-8:00, Sa 8 AM-8 PM, Su 8 AM-8 PM Little League Practice & Games	22.5	24	46.5	
	3	M-F 3:30-8:00, Sa 8 AM-8 PM, Su 8 AM-8 PM Little League Practice & Games	22.5	24	46.5	
	4	M-F 3:30-8:00, Sa 8 AM-8 PM, Su 8 AM-8 PM Little League Practice & Games	22.5	24	46.5	
June	1	M-F 3:30-8:00, Sa 8 AM-8 PM, Su 8 AM-8 PM Little League Practice & Games	22.5	24	46.5	
	2	M-F 3:30-8:00, Sa 8 AM-8 PM, Su 8 AM-8 PM Little League Practice & Games	22.5	24	46.5	
	3	M-F 3:30-8:00, Sa 8 AM-8 PM, Su 8 AM-8 PM Little League Practice & Games	22.5	24	46.5	
	4	M-F 3:30-8:00, Sa 8 AM-8 PM, Su 8 AM-8 PM Little League Practice & Games	22.5	24	46.5	
July	1	M-F 3:30-8:00 Little League Practice & Games	22.5	0	22.5	
	2	M-F 3:30-8:00 Little League Practice & Games	22.5	0	22.5	

Field: Field of Dreams - Baseball 60' #2 (Community Field)

MONTH	Week	Description	Week Day Hours Used	Weekend Hours Used	Total Hours Used per Week	Comments
	3	M-F 3:30-8:00 Little League Practice & Games	22.5	0	22.5	
	4	M-F 3:30-8:00 Little League Practice & Games	22.5	0	22.5	
August	1	M-F 3:30-8:00, Sa, & Su 8 AM-8PM Little League Tourney	22.5	24	46.5	
	2	M-F 3:30-8:00, Sa, & Su 8 AM-8PM Little League Tourney	22.5	24	46.5	
	3	Idle				
	4	Idle				
September	1	Idle				
	2	Idle				
	3	Idle				
	4	Idle				
October	1	Idle				
	2	Idle				
	3	Idle				
	4	Idle				
November	1	Idle				
	2	Idle				
	3	Idle				
	4	Idle				
December	1	Idle				
	2	Idle				
	3	Idle				
	4	Idle				
		Total Hours Used	405	336	741	

Identified Field Users:

Rev: 8 September 2003

G:\Transportation\Middleborough\Master Plan\field study report Docs\Prelim analysis-Revised 8SEP03\Time Scheduled by field.xls\FOD-Baseball 60' #2

Field: Field of Dreams - Baseball 60' #3 Michaels Field)

MONTH	Week	Description	Week Day Hours Used	Weekend Hours Used	Total Hours Used per Week	Comments
Jan		/idle				
Feb		/idle				
Mar	1	/idle				
	2	/idle				
	3	/idle				
	4	/idle				
April		M-F 3:30-5 PM MLL Practices; M-F 5-8 PM MLL Games; Sa 8 AM-6 PM; MLL Games; Su 8 AM - 8 PM MLL Practice	22.5	22	44.5	
	1	M-F 3:30-5 PM MLL Practices; M-F 5-8 PM MLL Games; Sa 8 AM-6 PM; MLL Games; Su 8 AM - 8 PM MLL Practice	22.5	22	44.5	
	2	M-F 3:30-5 PM MLL Practices; M-F 5-8 PM MLL Games; Sa 8 AM-6 PM; MLL Games; Su 8 AM - 8 PM MLL Practice	22.5	22	44.5	
May		M-F 3:30-5 PM MLL Practices; M-F 5-8 PM MLL Games; Sa 8 AM-6 PM; MLL Games; Su 8 AM - 8 PM MLL Practice	22.5	22	44.5	
	1	M-F 3:30-5 PM MLL Practices; M-F 5-8 PM MLL Games; Sa 8 AM-6 PM; MLL Games; Su 8 AM - 8 PM MLL Practice	22.5	22	44.5	
	2	M-F 3:30-5 PM MLL Practices; M-F 5-8 PM MLL Games; Sa 8 AM-6 PM; MLL Games; Su 8 AM - 8 PM MLL Practice	22.5	22	44.5	
	3	M-F 3:30-5 PM MLL Practices; M-F 5-8 PM MLL Games; Sa 8 AM-6 PM; MLL Games; Su 8 AM - 8 PM MLL Practice	22.5	22	44.5	

Field: Field of Dreams - Baseball 60' #3 Michaels Field)

MONTH	Week	Description	Week Day Hours Used	Weekend Hours Used	Total Hours Used per Week	Comments
	4	M-F 3:30-5 PM MLL Practices; M-F 5-8 PM MLL Games; Sa 8 AM-6 PM; MLL Games; Su 8 AM - 8 PM MLL Practice	22.5	22	44.5	
		M-F 3:30-5 PM MLL Practices; M-F 5-8 PM MLL Games; Sa 8 AM-6 PM; MLL Games; Su 8 AM - 8 PM MLL Practice	22.5	22	44.5	
	1	M-F 3:30-5 PM MLL Practices; M-F 5-8 PM MLL Games; Sa 8 AM-6 PM; MLL Games; Su 8 AM - 8 PM MLL Practice	22.5	22	44.5	
	2	M-F 3:30-5 PM MLL Practices; M-F 5-8 PM MLL Games; Sa 8 AM-6 PM; MLL Games; Su 8 AM - 8 PM MLL Practice	22.5	22	44.5	
	3	M-F 3:30-5 PM MLL Practices; M-F 5-8 PM MLL Games; Sa 8 AM-6 PM; MLL Games; Su 8 AM - 8 PM MLL Practice	22.5	22	44.5	
		M-F 3:30-5 PM MLL Practices; M-F 5-8 PM MLL Games; Sa 8 AM-6 PM; MLL Games; Su 8 AM - 8 PM MLL Practice	22.5	22	44.5	
	4	M-F 3:30-5 PM MLL Practices; M-F 5-8 PM MLL Games; Sa 8 AM-6 PM; MLL Games; Su 8 AM - 8 PM MLL Practice	22.5	22	44.5	
		M-F 3:30-5 PM MLL Practices; M-F 5-8 PM MLL Games; Sa 8 AM-6 PM; MLL Games; Su 8 AM - 8 PM MLL Practice	22.5	22	44.5	
July	1	M-F 3:30-8 PM MLL Practices	22.5	0	22.5	
	2	M-F 3:30-8 PM MLL Practices	22.5	0	22.5	
	3	M-F 3:30-8 PM MLL Practices	22.5	0	22.5	
	4	M-F 3:30-8 PM MLL Practices	22.5	0	22.5	
August	1	M-F 3:30-8 PM MLL Practices; Sa & Su 8 AM - 8 PM MLL Tournament Games	22.5	24	46.5	
	2	M-F 3:30-8 PM MLL Practices; Sa & Su 8 AM - 8 PM MLL Tournament Games	22.5	24	46.5	
	3	Idle				
	4	Idle				
	1	Idle				
	2	Idle				
September	3	Idle				
	4	Idle				

Field: Field of Dreams - Baseball 60' #3 Michaels Field)

MONTH	Week	Description	Week Day Hours Used	Weekend Hours Used	Total Hours Used per Week	Comments
October	1	/d/e				
	2	/d/e				
	3	/d/e				
	4	/d/e				
November	1	/d/e				
	2	/d/e				
	3	/d/e				
	4	/d/e				
December						
Total Hours Used			405	312	717	

Identified Field Users:
Middleboro Little League

Field: West Side Front Baseball

MONTH	Week	Description	Week Day		Weekend		Total Hours Used per Week	Comments
			Hours Used	Hours Used	Hours Used	Hours Used		
Jan.		Idle						
Feb		Idle						
Mar	1	Idle						
	2	Idle						
	3	Idle						
	4	Idle						
		M-F 3:30-8 PM MLL Practices & Games; Sa 8 AM-8 PM MLL Games; Su 8 AM-8 PM MLL	22.5	24		46.5		
April	1	Practices						
		M-F 3:30-8 PM MLL Practices & Games; Sa 8 AM-8 PM MLL Games; Su 8 AM-8 PM MLL	22.5	24		46.5		
	2	Practices						
		M-F 3:30-8 PM MLL Practices & Games; Sa 8 AM-8 PM MLL Games; Su 8 AM-8 PM MLL	22.5	24		46.5		
	3	Practices						
		M-F 3:30-8 PM MLL Practices & Games; Sa 8 AM-8 PM MLL Games; Su 8 AM-8 PM MLL	22.5	24		46.5		
	4	Practices						
		M-F 3:30-8 PM MLL Practices & Games; Sa 8 AM-8 PM MLL Games; Su 8 AM-8 PM MLL	22.5	24		46.5		
May	1	Practices						
		M-F 3:30-8 PM MLL Practices & Games; Sa 8 AM-8 PM MLL Games; Su 8 AM-8 PM MLL	22.5	24		46.5		
	2	Practices						
		M-F 3:30-8 PM MLL Practices & Games; Sa 8 AM-8 PM MLL Games; Su 8 AM-8 PM MLL	22.5	24		46.5		

Field: West Side Front Baseball

MONTH	Week	Description	Week		Total Hours Used per Week	Comments
			Day Hours Used	Weekend Hours Used		
	3	M-F 3:30-8 PM MLL Practices & Games; Sa 8 AM-8 PM MLL Games; Su 8 AM-8 PM MLL Practices	22.5	24	46.5	
	4	M-F 3:30-8 PM MLL Practices & Games; Sa 8 AM-8 PM MLL Games; Su 8 AM-8 PM MLL Practices	22.5	24	46.5	
	1	M-F 3:30-8 PM MLL Practices & Games; Sa 8 AM-8 PM MLL Games; Su 8 AM-8 PM MLL Practices	22.5	24	46.5	
	2	M-F 3:30-8 PM MLL Practices & Games; Sa 8 AM-8 PM MLL Games; Su 8 AM-8 PM MLL Practices	22.5	24	46.5	
June	3	M-F 3:30-8 PM MLL Practices & Games; Sa 8 AM-8 PM MLL Games; Su 8 AM-8 PM MLL Practices	22.5	24	46.5	
	4	M-F 3:30-8 PM MLL Practices & Games; Sa 8 AM-8 PM MLL Games; Su 8 AM-8 PM MLL Practices	22.5	24	46.5	
	1	M-F 3:30-8 PM MLL Practices & Games; Sa 8 AM-8 PM MLL Games; Su 8 AM-8 PM MLL Practices	22.5	24	46.5	
	2	M-F 3:30-8 PM MLL Practices & Games; Sa 8 AM-8 PM MLL Games; Su 8 AM-8 PM MLL Practices	22.5	24	46.5	
	3	M-F 3:30-8 PM MLL Practices & Games; Sa 8 AM-8 PM MLL Games; Su 8 AM-8 PM MLL Practices	22.5	24	46.5	
	4	M-F 3:30-8 PM MLL Practices & Games; Sa 8 AM-8 PM MLL Games; Su 8 AM-8 PM MLL Practices	22.5	0	22.5	
	1	M-F 3:30-8 PM MLL Practices & Games; Sa 8 AM-8 PM MLL Games; Su 8 AM-8 PM MLL Practices	22.5	0	22.5	
	2	M-F 3:30-8 PM MLL Practices & Games; Sa 8 AM-8 PM MLL Games; Su 8 AM-8 PM MLL Practices	22.5	0	22.5	
July	3	M-F 3:30-8 PM MLL Practices & Games; Sa 8 AM-8 PM MLL Games; Su 8 AM-8 PM MLL Practices	22.5	0	22.5	
	4	M-F 3:30-8 PM MLL Practices & Games; Sa 8 AM-8 PM MLL Games; Su 8 AM-8 PM MLL Practices	22.5	0	22.5	
	1	M-F 3:30-8 PM MLL Practices & Games; Sa 8 AM-8 PM MLL Games; Su 8 AM-8 PM MLL Practices	22.5	0	22.5	
	2	M-F 3:30-8 PM MLL Practices & Games; Sa 8 AM-8 PM MLL Games; Su 8 AM-8 PM MLL Practices	22.5	0	22.5	
August	3	M-F 3:30-8 PM MLL Practices & Games; Sa 8 AM-8 PM MLL Games; Su 8 AM-8 PM MLL Practices	22.5	0	22.5	
	4	M-F 3:30-8 PM MLL Practices & Games; Sa 8 AM-8 PM MLL Games; Su 8 AM-8 PM MLL Practices	22.5	0	22.5	
	1	M-F 3:30-8 PM MLL Practices & Games; Sa 8 AM-8 PM MLL Games; Su 8 AM-8 PM MLL Practices	22.5	0	22.5	
	2	M-F 3:30-8 PM MLL Practices & Games; Sa 8 AM-8 PM MLL Games; Su 8 AM-8 PM MLL Practices	22.5	0	22.5	
	3	Idle				
	4	Idle				
	1	Idle				
	2	Idle				
September	3	Idle				
	4	Idle				
	1	Idle				
	2	Idle				

Field: West Side Front Baseball

MONTH	Week	Description	Week Day Hours Used	Weekend Hours Used	Total Hours Used per Week	Comments
October	1	Idle				
	2	Idle				
	3	Idle				
	4	Idle				
November	1	Idle				
	2	Idle				
	3	Idle				
	4	Idle				
December						
Total Hours Used			405	288	693	

Identified Field Users:
Middleboro Little League

Field: West Side Back Baseball

MONTH	Week	Description	Week Day		Weekend		Total Hours Used per Week	Comments
			Hours Used	Hours Used	Hours Used	Hours Used		
Jan		Idle						
Feb		Idle						
Mar	1	Idle						
	2	Idle						
	3	Idle						
	4	Idle						
		M-F 3:30-8 PM MLL Practices & Games; Sa 8 AM-8 PM MLL Games; Su 8 AM-8 PM MLL Practices	22.5	24	46.5			
April	1	M-F 3:30-8 PM MLL Practices & Games; Sa 8 AM-8 PM MLL Games; Su 8 AM-8 PM MLL Practices	22.5	24	46.5			
	2	M-F 3:30-8 PM MLL Practices & Games; Sa 8 AM-8 PM MLL Games; Su 8 AM-8 PM MLL Practices	22.5	24	46.5			
	3	M-F 3:30-8 PM MLL Practices & Games; Sa 8 AM-8 PM MLL Games; Su 8 AM-8 PM MLL Practices	22.5	24	46.5			
	4	M-F 3:30-8 PM MLL Practices & Games; Sa 8 AM-8 PM MLL Games; Su 8 AM-8 PM MLL Practices	22.5	24	46.5			

Field: West Side Back Baseball

MONTH	Week	Description	Week Day		Weekend		Total Hours Used per Week	Comments
			Hours Used	Hours Used	Hours Used	Hours Used		
May	1	M-F 3:30-8 PM MLL Practices & Games; Sa 8 AM-8 PM MLL Games; Su 8 AM-8 PM MLL Practices	22.5	24	46.5			
	2	M-F 3:30-8 PM MLL Practices & Games; Sa 8 AM-8 PM MLL Games; Su 8 AM-8 PM MLL Practices	22.5	24	46.5			
	3	M-F 3:30-8 PM MLL Practices & Games; Sa 8 AM-8 PM MLL Games; Su 8 AM-8 PM MLL Practices	22.5	24	46.5			
	4	M-F 3:30-8 PM MLL Practices & Games; Sa 8 AM-8 PM MLL Games; Su 8 AM-8 PM MLL Practices	22.5	24	46.5			
June	1	M-F 3:30-8 PM MLL Practices & Games; Sa 8 AM-8 PM MLL Games; Su 8 AM-8 PM MLL Practices	22.5	24	46.5			
	2	M-F 3:30-8 PM MLL Practices & Games; Sa 8 AM-8 PM MLL Games; Su 8 AM-8 PM MLL Practices	22.5	24	46.5			
	3	M-F 3:30-8 PM MLL Practices & Games; Sa 8 AM-8 PM MLL Games; Su 8 AM-8 PM MLL Practices	22.5	24	46.5			
	4	M-F 3:30-8 PM MLL Practices & Games; Sa 8 AM-8 PM MLL Games; Su 8 AM-8 PM MLL Practices	22.5	24	46.5			
July	1	M-F 3:30-8 PM MLL Practices	22.5	0	22.5			
	2	M-F 3:30-8 PM MLL Practices	22.5	0	22.5			
	3	M-F 3:30-8 PM MLL Practices	22.5	0	22.5			
	4	M-F 3:30-8 PM MLL Practices	22.5	0	22.5			
August	1	M-F 3:30-8 PM MLL Practices	22.5	0	22.5			
	2	M-F 3:30-8 PM MLL Practices	22.5	0	22.5			
	3	Idle						
	4	Idle						

Field: West Side Back Baseball

MONTH	Week	Description	Week Day		Weekend		Total Hours Used per Week	Comments
			Hours Used	Hours Used	Hours Used	Hours Used		
September	1	/d/e						
	2	/d/e						
	3	/d/e						
	4	/d/e						
October	1	/d/e						
	2	/d/e						
	3	/d/e						
	4	/d/e						
November	1	/d/e						
	2	/d/e						
	3	/d/e						
	4	/d/e						
December	1	/d/e						
	2	/d/e						
	3	/d/e						
	4	/d/e						
Total Hours Used			405	288	693			

Identified Field Users:
Middleboro Little League

Field: VFW - Gauthier Field

MONTH	Week	Description	Week Day Hours Used	Weekend Hours Used	Total Hours Used per Week	Comments
Jan		Idle				
Feb		Idle				
Mar	1	Idle				
	2	Idle				
	3	Idle				
	4	Idle				
		M-F 3:30-5:30 PM MLL Practices; M-F 5:30-8 PM MLL Games; Sa 8 AM-8 PM MLL Games; Su 8 AM-8 PM MLL Practices	22.5	24	46.5	
April	1	M-F 3:30-5:30 PM MLL Practices; M-F 5:30-8 PM MLL Games; Sa 8 AM-8 PM MLL Games; Su 8 AM-8 PM MLL Practices	22.5	24	46.5	
	2	M-F 3:30-5:30 PM MLL Practices; M-F 5:30-8 PM MLL Games; Sa 8 AM-8 PM MLL Games; Su 8 AM-8 PM MLL Practices	22.5	24	46.5	
	3	M-F 3:30-5:30 PM MLL Practices; M-F 5:30-8 PM MLL Games; Sa 8 AM-8 PM MLL Games; Su 8 AM-8 PM MLL Practices	22.5	24	46.5	
	4	M-F 3:30-5:30 PM MLL Practices; M-F 5:30-8 PM MLL Games; Sa 8 AM-8 PM MLL Games; Su 8 AM-8 PM MLL Practices	22.5	24	46.5	
		M-F 3:30-5:30 PM MLL Practices; M-F 5:30-8 PM MLL Games; Sa 8 AM-8 PM MLL Games; Su 8 AM-8 PM MLL Practices	22.5	24	46.5	
May	1	M-F 3:30-5:30 PM MLL Practices; M-F 5:30-8 PM MLL Games; Sa 8 AM-8 PM MLL Games; Su 8 AM-8 PM MLL Practices	22.5	24	46.5	
	2	M-F 3:30-5:30 PM MLL Practices; M-F 5:30-8 PM MLL Games; Sa 8 AM-8 PM MLL Games; Su 8 AM-8 PM MLL Practices	22.5	24	46.5	

Field: VFW - Gauthier Field

MONTH	Week	Description	Week Day Hours Used	Weekend Hours Used	Total Hours Used per Week	Comments
		M-F 3:30-5:30 PM MLL Practices; M-F 5:30-8 PM MLL Games; Sa 8 AM-8 PM MLL Games; Su 8 AM-8 PM MLL Practices	22.5	24	46.5	
	3	M-F 3:30-5:30 PM MLL Practices; M-F 5:30-8 PM MLL Games; Sa 8 AM-8 PM MLL Games; Su 8 AM-8 PM MLL Practices	22.5	24	46.5	
	4	M-F 3:30-5:30 PM MLL Practices; M-F 5:30-8 PM MLL Games; Sa 8 AM-8 PM MLL Games; Su 8 AM-8 PM MLL Practices	22.5	24	46.5	
June	1	M-F 3:30-5:30 PM MLL Practices; M-F 5:30-8 PM MLL Games; Sa 8 AM-8 PM MLL Games; Su 8 AM-8 PM MLL Practices	22.5	24	46.5	
	2	M-F 3:30-5:30 PM MLL Practices; M-F 5:30-8 PM MLL Games; Sa 8 AM-8 PM MLL Games; Su 8 AM-8 PM MLL Practices	22.5	24	46.5	
	3	M-F 3:30-5:30 PM MLL Practices; M-F 5:30-8 PM MLL Games; Sa 8 AM-8 PM MLL Games; Su 8 AM-8 PM MLL Practices	22.5	24	46.5	
	4	M-F 3:30-5:30 PM MLL Practices; M-F 5:30-8 PM MLL Games; Sa 8 AM-8 PM MLL Games; Su 8 AM-8 PM MLL Practices	22.5	24	46.5	
July	1	M-F 3:30-8 PM MLL Practices	22.5	0	22.5	
	2	M-F 3:30-8 PM MLL Practices	22.5	0	22.5	
	3	M-F 3:30-8 PM MLL Practices	22.5	0	22.5	
	4	M-F 3:30-8 PM MLL Practices	22.5	0	22.5	
August	1	M-F 3:30-8 PM MLL Practices	22.5	0	22.5	
	2	M-F 3:30-8 PM MLL Practices	22.5	0	22.5	
	3	Idle				
	4	Idle				
September	1	Idle				
	2	Idle				
	3	Idle				
	4	Idle				

Field: VFW - Gauthier Field

MONTH	Week	Description	Week Day Hours Used	Weekend Hours Used	Total Hours Used per Week	Comments
October	1	Idle				
	2	Idle				
	3	Idle				
	4	Idle				
November	1	Idle				
	2	Idle				
	3	Idle				
	4	Idle				
December						
Total Hours Used			405	288	693	

Identified Field Users:
Middleboro Little League

Field: Pierce Softball Tee Ball Field

MONTH	Week	Description	Week Day Hours Used	Weekend Hours Used	Total Hours Used per Week	Comments
Jan		Idle				
Feb		Idle				
Mar	1	Idle				
	2	Idle				
	3	Idle				
	4	Idle				
April	1	Tu & Th 5-8 PM Softball	6	0	6	
	2	Tu & Th 5-8 PM Softball	6	0	6	
	3	Tu & Th 5-8 PM Softball	6	0	6	
	4	Tu & Th 5-8 PM Softball	6	0	6	
May	1	Tu & Th 5-8 PM Softball	6	0	6	
	2	Tu & Th 5-8 PM Softball	6	0	6	
	3	Tu & Th 5-8 PM Softball	6	0	6	
	4	Tu & Th 5-8 PM Softball	6	0	6	
June	1	Tu & Th 5-8 PM Softball	6	0	6	
	2	Tu & Th 5-8 PM Softball	6	0	6	
	3	Tu & Th 5-8 PM Softball	6	0	6	
	4	Tu & Th 5-8 PM Softball	6	0	6	
July	1	M-F 9 AM - 4 PM Playground Activities	30	0	30	
	2	M-F 9 AM - 4 PM Playground Activities	30	0	30	
	3	M-F 9 AM - 4 PM Playground Activities	30	0	30	
	4	M-F 9 AM - 4 PM Playground Activities	30	0	30	

Field: Pierce Softball Tee Ball Field

MONTH	Week	Description	Week Day Hours Used	Weekend Hours Used	Total Hours Used per Week	Comments
August	1	M-F 9 AM - 4 PM Playground Activites	30	0	30	
	2	M-F 9 AM - 4 PM Playground Activites	30	0	30	
	3	M-F 9 AM - 4 PM Playground Activites	30	0	30	
	4	M-F 9 AM - 4 PM Playground Activites	30	0	30	
September	1	M-Th 5-8:30 PM MMC Football Practice	14	0	14	
	2	M-Th 5-8:30 PM MMC Football Practice	14	0	14	
	3	M-Th 5-8:30 PM MMC Football Practice	14	0	14	
	4	M-Th 5-8:30 PM MMC Football Practice	14	0	14	
October	1	M-Th 5-8:30 PM MMC Football Practice	14	0	14	
	2	M-Th 5-8:30 PM MMC Football Practice	14	0	14	
	3	M-Th 5-8:30 PM MMC Football Practice	14	0	14	
	4	M-Th 5-8:30 PM MMC Football Practice	14	0	14	
November	1	M-Th 5-8:30 PM MMC Football Practice	14	0	14	
	2	M-Th 5-8:30 PM MMC Football Practice	14	0	14	
	3	Idle				
	4	Idle				
December		Idle				
Total Hours Used			452	0	452	

Identified Field Users:
 Middleboro Youth Softball
 Town Recreation Department Day Camp Program
 MMC Football

Field: Field of Dreams - Tee Ball #1 (Farm League)

MONTH	Week	Description	Week Day Hours Used	Weekend Hours Used	Total Hours Used per Week	Comments
Jan.		Idle				
Feb		Idle				
Mar	1	Idle				
	2	Idle				
	3	Idle				
	4	Idle				
April		M-F 3:30-5 PM MLL Practices; M-F 5-8 PM MLL Games; Sa 8 AM-8 PM; MLL Games; Su 12 PM - 8 PM MLL Practice	22.5	19	41.5	
	1	M-F 3:30-5 PM MLL Practices; M-F 5-8 PM MLL Games; Sa 8 AM-8 PM; MLL Games; Su 12 PM - 8 PM MLL Practice	22.5	19	41.5	
	2	M-F 3:30-5 PM MLL Practices; M-F 5-8 PM MLL Games; Sa 8 AM-8 PM; MLL Games; Su 12 PM - 8 PM MLL Practice	22.5	19	41.5	
	3	M-F 3:30-5 PM MLL Practices; M-F 5-8 PM MLL Games; Sa 8 AM-8 PM; MLL Games; Su 12 PM - 8 PM MLL Practice	22.5	19	41.5	
May		M-F 3:30-5 PM MLL Practices; M-F 5-8 PM MLL Games; Sa 8 AM-8 PM; MLL Games; Su 12 PM - 8 PM MLL Practice	22.5	19	41.5	
	1	M-F 3:30-5 PM MLL Practices; M-F 5-8 PM MLL Games; Sa 8 AM-8 PM; MLL Games; Su 12 PM - 8 PM MLL Practice	22.5	19	41.5	

Field: Field of Dreams - Tee Ball #1 (Farm League)

MONTH	Week	Description	Week Day Hours Used	Weekend Hours Used	Total Hours Used per Week	Comments
	2	M-F 3:30-5 PM MLL Practices; M-F 5-8 PM MLL Games; Sa 8 AM-8 PM; MLL Games; Su 12 PM - 8 PM MLL Practice	22.5	19	41.5	
	3	M-F 3:30-5 PM MLL Practices; M-F 5-8 PM MLL Games; Sa 8 AM-8 PM; MLL Games; Su 12 PM - 8 PM MLL Practice	22.5	19	41.5	
	4	M-F 3:30-5 PM MLL Practices; M-F 5-8 PM MLL Games; Sa 8 AM-8 PM; MLL Games; Su 12 PM - 8 PM MLL Practice	22.5	19	41.5	
June	1	M-F 3:30-5 PM MLL Practices; M-F 5-8 PM MLL Games; Sa 8 AM-8 PM; MLL Games; Su 12 PM - 8 PM MLL Practice	22.5	19	41.5	
	2	M-F 3:30-5 PM MLL Practices; M-F 5-8 PM MLL Games; Sa 8 AM-8 PM; MLL Games; Su 12 PM - 8 PM MLL Practice	22.5	19	41.5	
	3	M-F 3:30-5 PM MLL Practices; M-F 5-8 PM MLL Games; Sa 8 AM-8 PM; MLL Games; Su 12 PM - 8 PM MLL Practice	22.5	19	41.5	
	4	M-F 3:30-5 PM MLL Practices; M-F 5-8 PM MLL Games; Sa 8 AM-8 PM; MLL Games; Su 12 PM - 8 PM MLL Practice	22.5	19	41.5	
July	1	M-F 3:30-6 PM MLL Practices	12.5	0	12.5	
	2	M-F 3:30-6 PM MLL Practices	12.5	0	12.5	
	3	M-F 3:30-6 PM MLL Practices	12.5	0	12.5	
	4	M-F 3:30-6 PM MLL Practices	12.5	0	12.5	
August	1	M-F 3:30-6 PM MLL Practices	12.5	0	12.5	
	2	M-F 3:30-6 PM MLL Practices	12.5	0	12.5	
	3	Id/le				
	4	Id/le				

Field: Field of Dreams - Tee Ball #1 (Farm League)

MONTH	Week	Description	Week Day Hours Used	Weekend Hours Used	Total Hours Used per Week	Comments
September	1	Idle				
	2	Idle				
	3	Idle				
	4	Idle				
October	1	Idle				
	2	Idle				
	3	Idle				
	4	Idle				
November	1	Idle				
	2	Idle				
	3	Idle				
	4	Idle				
December	1	Idle				
	2	Idle				
	3	Idle				
	4	Idle				
Total Hours Used			345	228	573	

Identified Field Users:
Middleboro Little League

Field: Field of Dreams - Tee Ball #2

MONTH	Week	Description	Week Day Hours Used	Weekend Hours Used	Total Hours Used per Week	Comments
Jan		Idle				
Feb		Idle				
Mar	1	Idle				
	2	Idle				
	3	Idle				
	4	Idle				
		M-F 3:30-5 PM MLL Practices; M-F 5-8 PM MLL Games; Sa 8 AM-8 PM; MLL Games; Su 12 PM - 8 PM MLL Practice	22.5	19	41.5	
April	1	M-F 3:30-5 PM MLL Practices; M-F 5-8 PM MLL Games; Sa 8 AM-8 PM; MLL Games; Su 12 PM - 8 PM MLL Practice	22.5	19	41.5	
	2	M-F 3:30-5 PM MLL Practices; M-F 5-8 PM MLL Games; Sa 8 AM-8 PM; MLL Games; Su 12 PM - 8 PM MLL Practice	22.5	19	41.5	
	3	M-F 3:30-5 PM MLL Practices; M-F 5-8 PM MLL Games; Sa 8 AM-8 PM; MLL Games; Su 12 PM - 8 PM MLL Practice	22.5	19	41.5	
	4	M-F 3:30-5 PM MLL Practices; M-F 5-8 PM MLL Games; Sa 8 AM-8 PM; MLL Games; Su 12 PM - 8 PM MLL Practice	22.5	19	41.5	
	1	M-F 3:30-5 PM MLL Practices; M-F 5-8 PM MLL Games; Sa 8 AM-8 PM; MLL Games; Su 12 PM - 8 PM MLL Practice	22.5	19	41.5	
May	2	M-F 3:30-5 PM MLL Practices; M-F 5-8 PM MLL Games; Sa 8 AM-8 PM; MLL Games; Su 12 PM - 8 PM MLL Practice	22.5	19	41.5	
	3	M-F 3:30-5 PM MLL Practices; M-F 5-8 PM MLL Games; Sa 8 AM-8 PM; MLL Games; Su 12 PM - 8 PM MLL Practice	22.5	19	41.5	
	4	M-F 3:30-5 PM MLL Practices; M-F 5-8 PM MLL Games; Sa 8 AM-8 PM; MLL Games; Su 12 PM - 8 PM MLL Practice	22.5	19	41.5	

Field: Field of Dreams - Tee Ball #2

MONTH	Week	Description	Week Day		Weekend		Total Hours Used per Week	Comments
			Hours Used	Weekend Hours Used	Hours Used	Weekend Hours Used		
June	1	M-F 3:30-5 PM MLL Practices; M-F 5-8 PM MLL Games; Sa 8 AM-8 PM; MLL Games; Su 12 PM - 1 PM MLL Practice	22.5	19	41.5			
	2	M-F 3:30-5 PM MLL Practices; M-F 5-8 PM MLL Games; Sa 8 AM-8 PM; MLL Games; Su 12 PM - 1 PM MLL Practice	22.5	19	41.5			
	3	M-F 3:30-5 PM MLL Practices; M-F 5-8 PM MLL Games; Sa 8 AM-8 PM; MLL Games; Su 12 PM - 1 PM MLL Practice	22.5	19	41.5			
	4	M-F 3:30-5 PM MLL Practices; M-F 5-8 PM MLL Games; Sa 8 AM-8 PM; MLL Games; Su 12 PM - 1 PM MLL Practice	22.5	19	41.5			
July	1	M-F 3:30-6 PM MLL Practices	12.5	0	12.5			
	2	M-F 3:30-6 PM MLL Practices	12.5	0	12.5			
	3	M-F 3:30-6 PM MLL Practices	12.5	0	12.5			
	4	M-F 3:30-6 PM MLL Practices	12.5	0	12.5			
August	1	M-F 3:30-6 PM MLL Practices	12.5	0	12.5			
	2	M-F 3:30-6 PM MLL Practices	12.5	0	12.5			
	3	Idle						
	4	Idle						
September	1	Idle						
	2	Idle						
	3	Idle						
	4	Idle						
October	1	Idle						
	2	Idle						
	3	Idle						
	4	Idle						

Field: Field of Dreams - Tee Ball #2

MONTH	Week	Description	Week Day		Weekend		Total Hours Used per Week	Comments
			Hours Used	Hours Used	Hours Used	Hours Used		
November	1	Idle						
	2	Idle						
	3	Idle						
	4	Idle						
December		Idle						
			345		228		573	
Total Hours Used			345		228		573	

Identified Field Users:
Middleboro Little League

Field: Field of Dreams - Tee Ball #3 Practice Only

MONTH	Week	Description	Week Day Hours Used	Weekend Hours Used	Total Hours Used per Week	Comments
Jan		/d/e				
Feb		/d/e				
Mar	1	/d/e				
	2	/d/e				
	3	/d/e				
	4	/d/e				
April	1	/d/e	0	0	0	
	2	/d/e	0	0	0	
	3	/d/e	0	0	0	
	4	/d/e	0	0	0	
May	1	/d/e	0	0	0	
	2	/d/e	0	0	0	
	3	/d/e	0	0	0	
	4	/d/e	0	0	0	
June	1	/d/e	0	0	0	
	2	/d/e	0	0	0	
	3	/d/e	0	0	0	
	4	/d/e	0	0	0	
July	1	/d/e	0	0	0	
	2	/d/e	0	0	0	
	3	/d/e	0	0	0	

Field: Field of Dreams - Tee Ball #3 Practice Only

MONTH	Week	Description	Week Day		Weekend		Total Hours Used per Week	Comments
			Hours Used	Hours Used	Hours Used	Hours Used		
August	4	/d/e	0	0	0	0	0	
	1	/d/e	0	0	0	0	0	
	2	/d/e	0	0	0	0	0	
	3	/d/e						
September	4	/d/e						
	1	/d/e						
	2	/d/e						
	3	/d/e						
October	4	/d/e						
	1	/d/e						
	2	/d/e						
	3	/d/e						
November	4	/d/e						
	1	/d/e						
	2	/d/e						
	3	/d/e						
December	4	/d/e						
	1	/d/e						
	2	/d/e						
	3	/d/e						
Total Hours Used			0	0	0	0	0	

Identified Field Users:

Notes:
 This field is not currently in a playable condition. Could be used in future after renovation.
 The field is located on the far side of the Burkland School Complex.

Field: High School Softball #1 (Varsity)

MONTH	Week	Description	Week Day Hours Used	Weekend Hours Used	Total Hours Used per Week	Comments
Jan		Idle				
Feb		Idle				
Mar	1	Idle				
	2	Idle				
	3	M-F 2-5 PM MHS Softball	15	0	15	
	4	M-F 2-5 PM MHS Softball	15	0	15	
April		M-F 2-5 PM MHS Softball; M-F 5-8 PM Youth Softball; Sa 8 AM-6 PM Softball; Su 1-4 PM Softball	30	13	43	
	1	Softball				
		M-F 2-5 PM MHS Softball; M-F 5-8 PM Youth Softball; Sa 8 AM-6 PM Softball; Su 1-4 PM Softball	30	13	43	
	2	Softball				
		M-F 2-5 PM MHS Softball; M-F 5-8 PM Youth Softball; Sa 8 AM-6 PM Softball; Su 1-4 PM Softball	30	13	43	
		M-F 2-5 PM MHS Softball; M-F 5-8 PM Youth Softball; Sa 8 AM-6 PM Softball; Su 1-4 PM Softball	30	13	43	
		M-F 2-5 PM MHS Softball; M-F 5-8 PM Youth Softball; Sa 8 AM-6 PM Softball; Su 1-4 PM Softball	30	13	43	
		M-F 2-5 PM MHS Softball; M-F 5-8 PM Youth Softball; Sa 8 AM-6 PM Softball; Su 1-4 PM Softball	30	13	43	
May		M-F 2-5 PM MHS Softball; M-F 5-8 PM Youth Softball; Sa 8 AM-6 PM Softball; Su 1-4 PM Softball	30	13	43	
	1	Softball				
		M-F 2-5 PM MHS Softball; M-F 5-8 PM Youth Softball; Sa 8 AM-6 PM Softball; Su 1-4 PM Softball	30	13	43	
	2	Softball				
		M-F 2-5 PM MHS Softball; M-F 5-8 PM Youth Softball; Sa 8 AM-6 PM Softball; Su 1-4 PM Softball	30	13	43	
		M-F 2-5 PM MHS Softball; M-F 5-8 PM Youth Softball; Sa 8 AM-6 PM Softball; Su 1-4 PM Softball	30	13	43	
		M-F 2-5 PM MHS Softball; M-F 5-8 PM Youth Softball; Sa 8 AM-6 PM Softball; Su 1-4 PM Softball	30	13	43	
		M-F 2-5 PM MHS Softball; M-F 5-8 PM Youth Softball; Sa 8 AM-6 PM Softball; Su 1-4 PM Softball	30	13	43	

Field: High School Softball #1 (Varsity)

MONTH	Week	Description	Week			Total Hours Used per Week	Comments
			Week Day Hours Used	Weekend Hours Used	Total Hours Used per Week		
June	1	M-F 2-5 PM MHS Softball; M-F 5-8 PM Youth Softball; Sa 8 AM-6 PM Softball; Su 1-4 PM Softball	30	13	43		
	2	M-F 2-5 PM MHS Softball; M-F 5-8 PM Youth Softball; Sa 8 AM-6 PM Softball; Su 1-4 PM Softball	30	13	43		
	3	M-F 5-8 PM Youth Softball; Sa 8 AM-6 PM Softball; Su 1-4 PM Softball	15	13	28		
	4	M-F 5-8 PM Youth Softball; Sa 8 AM-6 PM Softball; Su 1-4 PM Softball	15	13	28		
July	1	M, W, F 5-8 PM Softball	9	0	9		
	2	M, W, F 5-8 PM Softball	9	0	9		
	3	M, W, F 5-8 PM Softball	9	0	9		
	4	M, W, F 5-8 PM Softball	9	0	9		
August	1	M, W, F 5-8 PM Softball	9	0	9		
	2	M, W, F 5-8 PM Softball	9	0	9		
	3	M, W, F 5-8 PM Softball	9	0	9		
	4	M, W, F 5-8 PM Softball	9	0	9		
September	1	M, W, F 5-8 PM Softball; M-F 8-3 PM MHS Field Hockey & Soccer Double Sessions on outfield grass; Sa & Su 8 AM-1 PM MHS Field Hockey & Soccer Practice	48	10	58	6 Teams practicing here and there on outfield grass - Varsity, Jun. Varsity, & Freshman Field Hockey & Soccer	
	2	M-F 2-5 PM MHS Field Hockey & Soccer on outfield grass; Sa & Su 8 AM-1 PM MHS Field Hockey & Soccer Practice	15	10	25		
	3	M-F 2-5 PM MHS Field Hockey & Soccer on outfield grass; Sa & Su 8 AM-1 PM MHS Field Hockey & Soccer Practice	15	10	25		
	4	M-F 2-5 PM MHS Field Hockey & Soccer on outfield grass; Sa & Su 8 AM-1 PM MHS Field Hockey & Soccer Practice	15	10	25		

Field: High School Softball #1 (Varsity)

MONTH	Week	Description	Week Day Hours Used	Weekend Hours Used	Total Hours Used per Week	Comments
October	1	M-F 2-5 PM MHS Field Hockey & Soccer on outfield grass; Sa & Su 8 AM-1 PM MHS Field Hockey & Soccer Practice	15	10	25	
	2	M-F 2-5 PM MHS Field Hockey & Soccer on outfield grass; Sa & Su 8 AM-1 PM MHS Field Hockey & Soccer Practice	15	10	25	
	3	M-F 2-5 PM MHS Field Hockey & Soccer on outfield grass; Sa & Su 8 AM-1 PM MHS Field Hockey & Soccer Practice	15	10	25	
	4	M-F 2-5 PM MHS Field Hockey & Soccer on outfield grass; Sa & Su 8 AM-1 PM MHS Field Hockey & Soccer Practice	15	10	25	
November	1	Idle				
	2	Idle				
	3	Idle				
	4	Idle				
December	1	Idle				
	2	Idle				
	3	Idle				
	4	Idle				
Total Hours Used			591	246	837	

Identified Field Users:
 Middleboro Youth Softball League
 High School Softball Teams

High School Field Hockey Team
 High School Soccer Team

Field: High School Softball #2 (Front Field)

MONTH	Week	Description	Week Day Hours Used	Weekend Hours Used	Total Hours Used per Week	Comments
Jan		Idle				
Feb		Idle				
Mar	1	Idle				
	2	Idle				
	3	M-F 2-5 PM MHS Softball	15	0	15	
	4	M-F 2-5 PM MHS Softball	15	0	15	
		M-F 2-5 PM MHS Softball; M-F 5-8 PM Youth Softball; Sa 9 AM-5 PM & Su 12 PM-3 PM Youth Softball	30	11	41	
April	1	Softball	30	11	41	
	2	M-F 2-5 PM MHS Softball; M-F 5-8 PM Youth Softball; Sa 9 AM-5 PM & Su 12 PM-3 PM Youth Softball	30	11	41	
	3	M-F 2-5 PM MHS Softball; M-F 5-8 PM Youth Softball; Sa 9 AM-5 PM & Su 12 PM-3 PM Youth Softball	30	11	41	
	4	M-F 2-5 PM MHS Softball; M-F 5-8 PM Youth Softball; Sa 9 AM-5 PM & Su 12 PM-3 PM Youth Softball	30	11	41	
May	1	M-F 2-5 PM MHS Softball; M-F 5-8 PM Youth Softball; Sa 9 AM-5 PM & Su 12 PM-3 PM Youth Softball	30	11	41	
	2	M-F 2-5 PM MHS Softball; M-F 5-8 PM Youth Softball; Sa 9 AM-5 PM & Su 12 PM-3 PM Youth Softball	30	11	41	
	3	M-F 2-5 PM MHS Softball; M-F 5-8 PM Youth Softball; Sa 9 AM-5 PM & Su 12 PM-3 PM Youth Softball	30	11	41	
	4	M-F 2-5 PM MHS Softball; M-F 5-8 PM Youth Softball; Sa 9 AM-5 PM & Su 12 PM-3 PM Youth Softball	30	11	41	

Field: High School Softball #2 (Front Field)

MONTH	Week	Description	Week Day		Weekend		Total
			Hours Used	Hours Used	Hours Used	Hours Used	
June	1	M-F 5-8 PM Youth Softball; Sa 9 AM-5 PM & Su 12 PM-3 PM Youth Softball	15	11	26		
	2	M-F 5-8 PM Youth Softball; Sa 9 AM-5 PM & Su 12 PM-3 PM Youth Softball	15	11	26		
	3	M-F 5-8 PM Youth Softball; Sa 9 AM-5 PM & Su 12 PM-3 PM Youth Softball	15	11	26		
	4	M-F 5-8 PM Youth Softball; Sa 9 AM-5 PM & Su 12 PM-3 PM Youth Softball	15	11	26		
July	1	M, W, F 5-8 PM Softball	9	0	9		
	2	M, W, F 5-8 PM Softball	9	0	9		
	3	M, W, F 5-8 PM Softball	9	0	9		
	4	M, W, F 5-8 PM Softball	9	0	9		
August	1	M, W, F 5-8 PM Softball	9	0	9		
	2	M, W, F 5-8 PM Softball	9	0	9		
	3	M, W, F 5-8 PM Softball	9	0	9		
	4	M, W, F 5-8 PM Softball	9	0	9		
September	1	Idle					
	2	Idle					
	3	Idle					
	4	Idle					
October	1	Idle					
	2	Idle					
	3	Idle					
	4	Idle					
November	1	Idle					
	2	Idle					
	3	Idle					
	4	Idle					
December	1	Idle					
	2	Idle					
	3	Idle					
	4	Idle					
Total Hours Used			402	132	534		

Identified Field Users:
 Middleboro Youth Softball League
 High School Softball Teams
 High School Field Hockey Team (In shared use scenarios; not shown in table above)
 MMC Football (In shared use scenarios; not shown in table above)

Field: High School Softball #3 (Back Field - Junior Varsity)

MONTH	Week	Description	Week Day		Weekend		Total Hours Used per Week	Comments
			Hours Used	Weekend Hours Used	Hours Used	Weekend Hours Used		
Jan		Idle						
Feb		Idle						
Mar	1	Idle						
	2	Idle						
	3	M-F 2-5 PM MHS Softball	15	0	15			
	4	M-F 2-5 PM MHS Softball	15	0	15			
April	1	M-F 2-5 PM MHS Softball; M-F 5-8 PM Youth Softball; Sa 9 AM-5 PM & Su 12 PM-3 PM Youth Softball	30	11	41			
	2	M-F 2-5 PM MHS Softball; M-F 5-8 PM Youth Softball; Sa 9 AM-5 PM & Su 12 PM-3 PM Youth Softball	30	11	41			
	3	M-F 2-5 PM MHS Softball; M-F 5-8 PM Youth Softball; Sa 9 AM-5 PM & Su 12 PM-3 PM Youth Softball	30	11	41			
	4	M-F 2-5 PM MHS Softball; M-F 5-8 PM Youth Softball; Sa 9 AM-5 PM & Su 12 PM-3 PM Youth Softball	30	11	41			
May	1	M-F 2-5 PM MHS Softball; M-F 5-8 PM Youth Softball; Sa 9 AM-5 PM & Su 12 PM-3 PM Youth Softball	30	11	41			
	2	M-F 2-5 PM MHS Softball; M-F 5-8 PM Youth Softball; Sa 9 AM-5 PM & Su 12 PM-3 PM Youth Softball	30	11	41			
	3	M-F 2-5 PM MHS Softball; M-F 5-8 PM Youth Softball; Sa 9 AM-5 PM & Su 12 PM-3 PM Youth Softball	30	11	41			
	4	M-F 2-5 PM MHS Softball; M-F 5-8 PM Youth Softball; Sa 9 AM-5 PM & Su 12 PM-3 PM Youth Softball	30	11	41			

Field: High School Softball #3 (Back Field - Junior Varsity)

MONTH	Week	Description	Week Day Hours Used	Weekend Hours Used	Total Hours Used per Week	Comments
June	1	M-F 5-8 PM Youth Softball; Sa 9 AM-5 PM & Su 12 PM-3 PM Youth Softball	15	11	26	
	2	M-F 5-8 PM Youth Softball; Sa 9 AM-5 PM & Su 12 PM-3 PM Youth Softball	15	11	26	
	3	M-F 5-8 PM Youth Softball; Sa 9 AM-5 PM & Su 12 PM-3 PM Youth Softball	15	11	26	
	4	M-F 5-8 PM Youth Softball; Sa 9 AM-5 PM & Su 12 PM-3 PM Youth Softball	15	11	26	
July	1	M, W, F 5-8 PM Softball	9	0	9	
	2	M, W, F 5-8 PM Softball	9	0	9	
	3	M, W, F 5-8 PM Softball	9	0	9	
	4	M, W, F 5-8 PM Softball	9	0	9	
August	1	M, W, F 5-8 PM Softball	9	0	9	
	2	M, W, F 5-8 PM Softball	9	0	9	
	3	M, W, F 5-8 PM Softball	9	0	9	
	4	M, W, F 5-8 PM Softball	9	0	9	
September	1	Idle				
	2	Idle				
	3	Idle				
	4	Idle				
October	1	Idle				
	2	Idle				
	3	Idle				
	4	Idle				
November	1	Idle				
	2	Idle				
	3	Idle				
	4	Idle				
December	1	Idle				
	2	Idle				
	3	Idle				
	4	Idle				
Total Hours Used			402	132	534	

Identified Field Users:
 Middleboro Youth Softball League
 High School Softball Teams
 High School Field Hockey Team (In shared use scenarios; not shown in table above)
 MMC Football (In shared use scenarios; not shown in table above)

Field: Pierce Softball #1 - Large (A.K.A. Lower Softball Fields)

MONTH	Week	Description	Week			Total Hours Used per Week	Comments
			Day	Hours Used	Weekend Hours Used		
Jan		/dle					
Feb		/dle					
Mar	1	/dle					
	2	/dle					
	3	/dle					
	4	/dle					
April	1	M-F 4-8 PM Softball; Sa 9 AM-5PM & Su 12 PM-3 PM Softball	20	11	31		
	2	M-F 4-8 PM Softball; Sa 9 AM-5PM & Su 12 PM-3 PM Softball	20	11	31		
	3	M-F 4-8 PM Softball; Sa 9 AM-5PM & Su 12 PM-3 PM Softball	20	11	31		
	4	M-F 4-8 PM Softball; Sa 9 AM-5PM & Su 12 PM-3 PM Softball	20	11	31		
May	1	M-F 4-8 PM Softball; Sa 9 AM-5PM & Su 12 PM-3 PM Softball	20	11	31		
	2	M-F 4-8 PM Softball; Sa 9 AM-5PM & Su 12 PM-3 PM Softball	20	11	31		
	3	M-F 4-8 PM Softball; Sa 9 AM-5PM & Su 12 PM-3 PM Softball	20	11	31		
	4	M-F 4-8 PM Softball; Sa 9 AM-5PM & Su 12 PM-3 PM Softball	20	11	31		
June	1	M-F 4-8 PM Softball	20	0	20		
	2	M-F 4-8 PM Softball	20	0	20		
	3	M-F 4-8 PM Softball	20	0	20		
	4	M-F 4-8 PM Softball	20	0	20		

Field: Pierce Softball #1 - Large (A.K.A. Lower Softball Fields)

MONTH	Week	Description	Week Day		Weekend		Total Hours Used per Week	Comments
			Hours Used	Hours Used	Hours Used	Hours Used		
July	1	M-Th 4-8 PM Travel Softball	20	0	0	20		
	2	M-F 4-8 PM Travel Softball; Fri or Sa 6-10 PM Park cars for Cobra Games	16	4	4	20		
	3	M-F 4-8 PM Travel Softball; Tu & Th 6-8:30 PM Cobra Football Practice	21	0	0	21		
	4	M-F 4-8 PM Travel Softball; Tu & Th 6-8:30 PM Cobra Football Practice; Fri or Sa 6-10 PM Park cars for Cobra Games	21	4	4	25		
August	1	M-F 4-8 PM Travel Softball; Tu & Th 6-8:30 PM Cobra Football Practice	21	0	0	21		
	2	M-F 4-8 PM Travel Softball; Tu & Th 6-8:30 PM Cobra Football Practice; Fri or Sa 6-10 PM Park cars for Cobra Games	21	4	4	25		
	3	M-F 4-8 PM Travel Softball; Tu & Th 6-8:30 PM Cobra Football Practice	21	0	0	21		
	4	M-F 4-8 PM Travel Softball; Tu & Th 6-8:30 PM Cobra Football Practice; Fri or Sa 6-10 PM Park cars for Cobra Games	21	4	4	25		
September	1	M-F 4-8 PM Travel Softball; M-Th 5-8:30 PM MMC Football Practice	21	0	0	21		
	2	M-Th 5-8:30 PM MMC Football Practice; Fri or Sa 6-10 PM Park cars for Cobra Games	14	4	4	18		
	3	M-Th 5-8:30 PM MMC Football Practice	14	0	0	14		
	4	M-Th 5-8:30 PM MMC Football Practice; Fri or Sa 6-10 PM Park cars for Cobra Games	14	4	4	18		

Field: Pierce Softball #1 - Large (A.K.A. Lower Softball Fields)

MONTH	Week	Description	Week Day		Weekend		Total Hours Used per Week	Comments
			Hours Used	Weekend Hours Used	Hours Used	Weekend Hours Used		
October	1	M-Th 5-8:30 PM MMC Football Practice	14	0	0	14		
		M-Th 5-8:30 PM MMC Football Practice; Fri or Sa 6-10 PM Park cars for Cobra Games	14	4	4	18		
	2							
	3	M-Th 5-8:30 PM MMC Football Practice	14	0	0	14		
		M-Th 5-8:30 PM MMC Football Practice; Fri or Sa 6-10 PM Park cars for Cobra Games	14	4	4	18		
November	1	M-Th 5-8:30 PM MMC Football Practice	14	0	0	14		
	2	M-Th 5-8:30 PM MMC Football Practice; Fri or Sa 6-10 PM Park cars for Cobra Games	14	4	4	18		
	3	/idle						
	4	/idle						
December		/idle						
		Total Hours Used	549	124	124	673		

Identified Field Users:

- MMC Football
- Cobras Football
- Middleboro Youth Softball League

Field: Pierce Softball #2 - Large (A.K.A. Lower Softball Fields)

MONTH	Week	Description	Week Day		Weekend		Total Hours Used per Week	Comments
			Hours Used	Hours Used	Hours Used	Hours Used		
Jan		Idle						
Feb		Idle						
Mar	1	Idle						
	2	Idle						
	3	Idle						
	4	Idle						
April	1	M-F 4-8 PM Softball; Sa/Su 9 AM-3PM Softball	20	12		32		
	2	M-F 4-8 PM Softball; Sa/Su 9 AM-3PM Softball	20	12		32		
	3	M-F 4-8 PM Softball; Sa/Su 9 AM-3PM Softball	20	12		32		
	4	M-F 4-8 PM Softball; Sa/Su 9 AM-3PM Softball	20	12		32		
May	1	M-F 4-8 PM Softball; Sa/Su 9 AM-3PM Softball	20	12		32		
	2	M-F 4-8 PM Softball; Sa/Su 9 AM-3PM Softball	20	12		32		
	3	M-F 4-8 PM Softball; Sa/Su 9 AM-3PM Softball	20	12		32		
	4	M-F 4-8 PM Softball; Sa/Su 9 AM-3PM Softball	20	12		32		
June	1	M-F 4-8 PM Softball	20	0		20		
	2	M-F 4-8 PM Softball	20	0		20		
	3	M-F 4-8 PM Softball	20	0		20		
	4	M-F 4-8 PM Softball; Fri or Sa 6-10 PM Park cars for Cobra Games	20	4		24		

Field: Pierce Softball #2 - Large (A.K.A. Lower Softball Fields)

MONTH	Week	Description	Week Day		Weekend		Total Hours Used per Week	Comments
			Hours Used	Hours Used	Hours Used	Hours Used		
July	1	1/d/e	0	0	0	0	0	
	2	Fri or Sa 6-10 PM Park cars for Cobra Games	0	4	4	4	4	
	3	Tu & Th 6-8:30 PM Cobra Football Practice	5	0	0	5	5	
	4	Tu & Th 6-8:30 PM Cobra Football Practice; Fri or Sa 6-10 PM Park cars for Cobra Games	5	4	4	9	9	
August	1	Tu & Th 6-8:30 PM Cobra Football Practice	5	0	0	5	5	
	2	Tu & Th 6-8:30 PM Cobra Football Practice; Fri or Sa 6-10 PM Park cars for Cobra Games	5	4	4	9	9	
	3	Tu & Th 6-8:30 PM Cobra Football Practice	5	0	0	5	5	
September	1	Tu & Th 6-8:30 PM Cobra Football Practice; Fri or Sa 6-10 PM Park cars for Cobra Games	5	4	4	9	9	
	2	M-Th 5-8:30 PM MMC Football Practice	14	0	0	14	14	
	3	M-Th 5-8:30 PM MMC Football Practice; Fri or Sa 6-10 PM Park cars for Cobra Games	14	4	4	18	18	
	4	M-Th 5-8:30 PM MMC Football Practice	14	0	0	14	14	
October	1	M-Th 5-8:30 PM MMC Football Practice; Fri or Sa 6-10 PM Park cars for Cobra Games	14	4	4	18	18	
	2	M-Th 5-8:30 PM MMC Football Practice	14	0	0	14	14	
	3	M-Th 5-8:30 PM MMC Football Practice; Fri or Sa 6-10 PM Park cars for Cobra Games	14	4	4	18	18	
	4	M-Th 5-8:30 PM MMC Football Practice	14	0	0	14	14	

Field: Pierce Softball #2 - Large (A.K.A. Lower Softball Fields)

MONTH	Week	Description	Week Day Hours Used	Weekend Hours Used	Total Hours Used per Week	Comments
	3	M-Th 5-8:30 PM MMC Football Practice	14	0	14	
		M-Th 5-8:30 PM MMC Football Practice; Fri or Sa 6-10 PM Park cars for Cobra Games	2	4	6	
	4	M-Th 5-8:30 PM MMC Football Practice	14	0	14	
November	1	M-Th 5-8:30 PM MMC Football Practice	14	4	18	
	2	M-Th 5-8:30 PM MMC Football Practice; Fri or Sa 6-10 PM Park cars for Cobra Games				
	3	Idle				
	4	Idle				
		Idle				
December			398	136	534	
		Total Hours Used				

Identified Field Users:

- MMC Football
- Cobras Football
- Middelboro Youth Softball League

Field: Pierce Softball #3 - Large

MONTH	Week	Description	Week Day		Weekend		Total
			Hours Used	Hours Used	Hours Used	Hours Used	
Jan		Idle					
Feb		Idle					
Mar	1	Idle					
	2	Idle					
	3	Idle					
	4	Idle					
April		M-F 5:30-8 PM Softball; Sa 9 AM-5 PM & Su 9	12.5	14	26.5		
	1	AM-3 PM Softball	12.5	14	26.5		
	2	M-F 5:30-8 PM Softball; Sa 9 AM-5 PM & Su 9	12.5	14	26.5		
	3	AM-3 PM Softball	12.5	14	26.5		
May		M-F 5:30-8 PM Softball; Sa 9 AM-5 PM & Su 9	12.5	14	26.5		
	1	AM-3 PM Softball	12.5	14	26.5		
	2	M-F 5:30-8 PM Softball; Sa 9 AM-5 PM & Su 9	12.5	14	26.5		
	3	AM-3 PM Softball	12.5	14	26.5		
June		M-F 5:30-8 PM Softball; Sa 9 AM-5 PM & Su 9	12.5	14	26.5		
	1	AM-3 PM Softball	12.5	14	26.5		
	2	M-F 5:30-8 PM Softball; Sa 9 AM-5 PM & Su 9	12.5	14	26.5		
	3	AM-3 PM Softball	12.5	14	26.5		
	4	M-F 5:30-8 PM Softball; Sa 9 AM-5 PM & Su 9	12.5	14	26.5		

Field: Pierce Softball #3 - Large

MONTH	Week	Description	Week Day		Weekend		Total Hours Used per Week	Comments
			Hours Used	Weekend Hours Used	Hours Used	Weekend Hours Used		
July	1	M-F 9 AM-3 PM Playground Activities; Tu & Th 5-9 PM Softball	38	0	0	38		
	2	M-F 9 AM-3 PM Playground Activities; Tu & Th 5-9 PM Softball	38	0	0	38		
	3	M-F 9 AM-3 PM Playground Activities; Tu & Th 5-9 PM Softball	38	0	0	38		
	4	M-F 9 AM-3 PM Playground Activities; Tu & Th 5-9 PM Softball	38	0	0	38		
August	1	M-F 9 AM-3 PM Playground Activities; Tu & Th 5-9 PM Softball	38	0	0	38		
	2	M-F 9 AM-3 PM Playground Activities; Tu & Th 5-9 PM Softball	38	0	0	38		
	3	M-F 9 AM-3 PM Playground Activities; Tu & Th 5-9 PM Softball	38	0	0	38		
	4	M-F 9 AM-3 PM Playground Activities; Tu & Th 5-9 PM Softball	38	0	0	38		
September	1	M-Th 5-8:30 PM MMC Football	14	0	0	14		
	2	M-Th 5-8:30 PM MMC Football	14	0	0	14		
	3	M-Th 5-8:30 PM MMC Football	14	0	0	14		
	4	M-Th 5-8:30 PM MMC Football	14	0	0	14		
October	1	M-Th 5-8:30 PM MMC Football	14	0	0	14		
	2	M-Th 5-8:30 PM MMC Football	14	0	0	14		
	3	M-Th 5-8:30 PM MMC Football	14	0	0	14		
	4	M-Th 5-8:30 PM MMC Football	14	0	0	14		

Field: Pierce Softball #3 - Large

MONTH	Week	Description	Week Day		Weekend		Total Hours Used per Week	Comments
			Hours Used	Weekend Hours Used	Hours Used	Weekend Hours Used		
November	1	M-Th 5-8:30 PM MMC Football	14	0	14	0	14	
	2	M-Th 5-8:30 PM MMC Football	14	0	14	0	14	
	3	Idle						
	4	Idle						
December		Idle						
	Total Hours Used			594	168	762		

Identified Field Users:

- MMC Football
- Middleboro Youth Softball League
- Town Recreation Dept Day Camp Program

Field: Nichols - Softball

MONTH	Week	Description	Week Day		Weekend		Total Hours Used per Week	Comments
			Hours Used	Hours Used	Hours Used	Hours Used		
Jan		Idle						
Feb		Idle						
Mar	1	Idle						
	2	Idle						
	3	Idle						
	4	Idle						
April		M-F 2 PM-5 PM NMS Softball; Tu & Th 5:30-8 PM Youth Softball; Sa 8 AM-12 PM Youth Softball;	20	4	24			
	1	Softball;						
		M-F 2 PM-5 PM NMS Softball; Tu & Th 5:30-8 PM Youth Softball; Sa 8 AM-12 PM Youth Softball;	20	4	24			
	2	Softball;						
		M-F 2 PM-5 PM NMS Softball; Tu & Th 5:30-8 PM Youth Softball; Sa 8 AM-12 PM Youth Softball;	20	4	24			
	3	Softball;						
		M-F 2 PM-5 PM NMS Softball; Tu & Th 5:30-8 PM Youth Softball; Sa 8 AM-12 PM Youth Softball;	20	4	24			
	4	Softball;						
May		M-F 2 PM-5 PM NMS Softball; Tu & Th 5:30-8 PM Youth Softball; Sa 8 AM-12 PM Youth Softball;	20	4	24			
	1	Softball;						
		M-F 2 PM-5 PM NMS Softball; Tu & Th 5:30-8 PM Youth Softball; Sa 8 AM-12 PM Youth Softball;	20	4	24			
	2	Softball;						
		M-F 2 PM-5 PM NMS Softball; Tu & Th 5:30-8 PM Youth Softball; Sa 8 AM-12 PM Youth Softball;	20	4	24			
	3	Softball;						

Field: Nichols - Softball

MONTH	Week	Description	Week Day		Weekend		Total Hours Used per Week	Comments
			Hours Used	Hours Used	Hours Used	Hours Used		
June		M-F 2 PM-5 PM NMS Softball; Tu & Th 5:30-8 PM Youth Softball; Sa 8 AM-12 PM Youth Softball;	20	4	4	24		
	4	Softball;						
		M-F 2 PM-5 PM NMS Softball; Tu & Th 5:30-8 PM Youth Softball; Sa 8 AM-12 PM Youth Softball;	20	4	4	24		
	1	Softball;						
		M-F 2 PM-5 PM NMS Softball; Tu & Th 5:30-8 PM Youth Softball; Sa 8 AM-12 PM Youth Softball;	20	4	4	24		
	2	Softball;						
		M-F 2 PM-5 PM NMS Softball; Tu & Th 5:30-8 PM Youth Softball; Sa 8 AM-12 PM Youth Softball;	20	4	4	24		
	3	Softball;						
July		M-F 2 PM-5 PM NMS Softball; Tu & Th 5:30-8 PM Youth Softball; Sa 8 AM-12 PM Youth Softball;	20	4	4	24		
	4	Softball;						
	1	Tu & Th 5:30-8 PM Travel U-14 Softball	5	0	0	5		
	2	Tu & Th 5:30-8 PM Travel U-14 Softball	5	0	0	5		
August	3	Tu & Th 5:30-8 PM Travel U-14 Softball	5	0	0	5		
	4	Tu & Th 5:30-8 PM Travel U-14 Softball	5	0	0	5		
	1	Tu & Th 5:30-8 PM Travel U-14 Softball	5	0	0	5		
	2	Idle						
	3	Idle						
	4	Idle						

Field: Nichols - Softball

MONTH	Week	Description	Week Day Hours Used	Weekend Hours Used	Total Hours Used per Week	Comments
September	1	Idle				
	2	Idle				
	3	Idle				
	4	Idle				
October	1	Idle				
	2	Idle				
	3	Idle				
	4	Idle				
November	1	Idle				
	2	Idle				
	3	Idle				
	4	Idle				
December						
Total Hours Used			265	48	313	

Identified Field Users:
 Nichols Middle School Softball
 Middleboro Youth Softball League

Field: High School Soccer Field (Same Schedule as High School Baseball 90)

MONTH	Week	Description	Week Day Hours Used	Weekend Hours Used	Total Hours Used per Week	Comments
Jan		Idle				
Feb		Idle				
Mar	1	Idle				
	2	Idle				
	3	Idle				
	4	Idle				
April		M-F 2-5 PM MHS Baseball; M-F 5-8 PM Babe Ruth; Sa & Su 8 AM-8 PM Babe Ruth/MHS Baseball	30	24	54	
	1	M-F 2-5 PM MHS Baseball; M-F 5-8 PM Babe Ruth; Sa & Su 8 AM-8 PM Babe Ruth/MHS	30	24	54	
	2	M-F 2-5 PM MHS Baseball; M-F 5-8 PM Babe Ruth; Sa & Su 8 AM-8 PM Babe Ruth/MHS	30	24	54	
	3	M-F 2-5 PM MHS Baseball; M-F 5-8 PM Babe Ruth; Sa & Su 8 AM-8 PM Babe Ruth/MHS	30	24	54	
May	1	M-F 2-5 PM MHS Baseball; M-F 5-8 PM Babe Ruth; Sa & Su 8 AM-8 PM Babe Ruth/MHS	30	24	54	
	2	M-F 2-5 PM MHS Baseball; M-F 5-8 PM Babe Ruth; Sa & Su 8 AM-8 PM Babe Ruth/MHS	30	24	54	
	3	M-F 2-5 PM MHS Baseball; M-F 5-8 PM Babe Ruth; Sa & Su 8 AM-8 PM Babe Ruth/MHS	30	24	54	
	4	M-F 2-5 PM MHS Baseball; M-F 5-8 PM Babe Ruth; Sa & Su 8 AM-8 PM Babe Ruth/MHS	30	24	54	

Field: High School Soccer Field (Same Schedule as High School Baseball 90)

MONTH	Week	Description	Week Day		Weekend		Total Hours Used per Week	Comments
			Hours Used	Hours Used	Hours Used	Hours Used		
June	1	M-F 2-5 PM MHS Baseball; M-F 5-8 PM Babe Ruth; Sa & Su 8 AM-8 PM Babe Ruth/MHS Baseball	30	24	54			
	2	M-F 2-5 PM MHS Baseball; M-F 5-8 PM Babe Ruth; Sa & Su 8 AM-8 PM Babe Ruth/MHS Baseball	30	24	54			
	3	M-F 2-5 PM MHS Baseball; M-F 5-8 PM Babe Ruth; Sa & Su 8 AM-8 PM Babe Ruth/MHS Baseball	30	24	54			
	4	M-F 2-5 PM MHS Baseball; M-F 5-8 PM Babe Ruth; Sa & Su 8 AM-8 PM Babe Ruth/MHS Baseball	30	24	54			
July	1	M-F 5-8 PM; Sa & Su 8 AM-8 PM	15	24	39			
	2	M-F 5-8 PM; Sa & Su 8 AM-8 PM	15	24	39			
	3	M-F 5-8 PM; Sa & Su 8 AM-8 PM	15	24	39			
	4	M-F 5-8 PM; Sa & Su 8 AM-8 PM	15	24	39			
August	1	M-F 5-8 PM MMC Football Practice on Outfield;	15	0	15			
	2	M-F 5-8 PM MMC Football Practice on Outfield; M-F 5-8 PM MMC Football Practice on Outfield; M-F 8 AM-10 PM & 1-3 PM MHS Soccer & Field Hockey Practice	35	0	35			
	3	M-F 5-8 PM MMC Football Practice on Outfield; M-F 8 AM-10 PM & 1-3 PM MHS Soccer & Field Hockey Practice	35	0	35			

Field: High School Soccer Field (Same Schedule as High School Baseball 90)

MONTH	Week	Description	Week Day Hours Used	Weekend Hours Used	Total Hours Used per Week	Comments
September	1	M-F 2:30-5 PM Field Hockey & Soccer on Outfield; Sa & Su 9 AM - 4 PM MHS Field Hockey & Soccer Practice	12.5	14	26.5	
	2	M-F 2:30-5 PM Field Hockey & Soccer on Outfield; Sa & Su 9 AM - 4 PM MHS Field Hockey & Soccer Practice	12.5	14	26.5	
	3	M-F 2:30-5 PM Field Hockey & Soccer on Outfield; Sa & Su 9 AM - 4 PM MHS Field Hockey & Soccer Practice	12.5	14	26.5	
	4	M-F 2:30-5 PM Field Hockey & Soccer on Outfield; Sa & Su 9 AM - 4 PM MHS Field Hockey & Soccer Practice	12.5	14	26.5	
October	1	M-F 2:30-5 PM Field Hockey & Soccer on Outfield; Sa & Su 9 AM - 4 PM MHS Field Hockey & Soccer Practice	12.5	14	26.5	
	2	M-F 2:30-5 PM Field Hockey & Soccer on Outfield; Sa & Su 9 AM - 4 PM MHS Field Hockey & Soccer Practice	12.5	14	26.5	
November	1	M-F 2:30-5 PM Field Hockey & Soccer on Outfield; Sa & Su 9 AM - 4 PM MHS Field Hockey & Soccer Practice	12.5	14	26.5	
	2	M-F 2:30-5 PM Field Hockey & Soccer on Outfield; Sa & Su 9 AM - 4 PM MHS Field Hockey & Soccer Practice	12.5	14	26.5	
	3	M-F 2:30-5 PM Field Hockey & Soccer on Outfield; Sa & Su 9 AM - 4 PM MHS Field Hockey & Soccer Practice	12.5	14	26.5	
	4	M-F 2:30-5 PM Field Hockey & Soccer on Outfield; Sa & Su 9 AM - 4 PM MHS Field Hockey & Soccer Practice	12.5	14	26.5	
December	1				0	
	2				0	
	3				0	
	4				0	
Total Hours Used			620	496	1116	

Identified Field Users:
 Babe Ruth Baseball
 High School Baseball Team

High School Field Hockey Team
 High School Soccer Team

Field: Field of Dreams - Multi-Use Soccer

MONTH	Week	Description	Week Day Hours Used	Weekend Hours Used	Total Hours Used per Week	Comments
Jan		Idle				
		Idle				
	1	Idle				
	2	Idle				
Feb		Idle				
		Idle				
	1	Idle				
	2	Idle				
Mar		Idle				
		Idle				
	1	Idle				
	2	Idle				
April		M-F School P.E. at various times and 3:30-8 PM Youth Soccer; Sa & Su 8 AM-6 PM Youth Soccer	22.5	20	42.5	
	1	Games				
		M-F School P.E. at various times and 3:30-8 PM Youth Soccer; Sa & Su 8 AM-6 PM Youth Soccer	22.5	20	42.5	
	2	Games				
May		M-F School P.E. at various times and 3:30-8 PM Youth Soccer; Sa & Su 8 AM-6 PM Youth Soccer	22.5	20	42.5	
	1	Games				
		M-F School P.E. at various times and 3:30-8 PM Youth Soccer; Sa & Su 8 AM-6 PM Youth Soccer	22.5	20	42.5	
	2	Games				
		M-F School P.E. at various times and 3:30-8 PM Youth Soccer; Sa & Su 8 AM-6 PM Youth Soccer	22.5	20	42.5	
	1	Games				
		M-F School P.E. at various times and 3:30-8 PM Youth Soccer; Sa & Su 8 AM-6 PM Youth Soccer	22.5	20	42.5	
	2	Games				
		M-F School P.E. at various times and 3:30-8 PM Youth Soccer; Sa & Su 8 AM-6 PM Youth Soccer	22.5	20	42.5	
	1	Games				
		M-F School P.E. at various times and 3:30-8 PM Youth Soccer; Sa & Su 8 AM-6 PM Youth Soccer	22.5	20	42.5	
	2	Games				
		M-F School P.E. at various times and 3:30-8 PM Youth Soccer; Sa & Su 8 AM-6 PM Youth Soccer	22.5	20	42.5	
	1	Games				
		M-F School P.E. at various times and 3:30-8 PM Youth Soccer; Sa & Su 8 AM-6 PM Youth Soccer	22.5	20	42.5	
	2	Games				
		M-F School P.E. at various times and 3:30-8 PM Youth Soccer; Sa & Su 8 AM-6 PM Youth Soccer	22.5	20	42.5	
	1	Games				
		M-F School P.E. at various times and 3:30-8 PM Youth Soccer; Sa & Su 8 AM-6 PM Youth Soccer	22.5	20	42.5	
	2	Games				

Field: Field of Dreams - Multi-Use Soccer

MONTH	Week	Description	Week Day		Weekend		Total Hours Used per Week	Comments
			Hours Used	Hours Used	Hours Used	Hours Used		
June		M-F School P.E. at various times and 3:30-8 PM Youth Soccer; Sa & Su 8 AM-6 PM Youth Soccer	22.5		20		42.5	
	1	Games						
		M-F School P.E. at various times and 3:30-8 PM Youth Soccer; Sa & Su 8 AM-6 PM Youth Soccer	22.5		20		42.5	
	2	Games						
		M-F School P.E. at various times and 3:30-8 PM Youth Soccer; Sa & Su 8 AM-6 PM Youth Soccer	22.5		20		42.5	
	3	Games						
		M-F School P.E. at various times and 3:30-8 PM Youth Soccer; Sa & Su 8 AM-6 PM Youth Soccer	22.5		20		42.5	
	4	Games						
July	1	Idle						
	2	Idle						
	3	Idle						
	4	Idle						
August	1	Idle						
	2	Idle						
		M-F 3:30-8 PM Youth Practice; Sa & Su 8 AM-6 PM Youth Soccer Games	22.5		20		42.5	
	3	PM Youth Soccer Games						
		M-F 3:30-8 PM Youth Soccer; Sa & Su 8 AM-8 PM Youth Soccer Games	22.5		20		42.5	
	4	PM Youth Soccer Games						
		M-F 3:30-8 PM Youth Soccer; Sa & Su 8 AM-8 PM Youth Soccer Games	22.5		20		42.5	
	1	PM Youth Soccer Games						
September		M-F 3:30-8 PM Youth Soccer; Sa & Su 8 AM-8 PM Youth Soccer Games	22.5		20		42.5	
	2	PM Youth Soccer Games						
		M-F 3:30-8 PM Youth Soccer; Sa & Su 8 AM-8 PM Youth Soccer Games	22.5		20		42.5	
	3	PM Youth Soccer Games						
		M-F 3:30-8 PM Youth Soccer; Sa & Su 8 AM-8 PM Youth Soccer Games	22.5		20		42.5	
	4	PM Youth Soccer Games						

Field: Field of Dreams - Multi-Use Soccer

MONTH	Week	Description	Week Day		Weekend		Total Hours Used per Week	Comments
			Hours Used	Hours Used	Hours Used	Hours Used		
October	1	M-F 3:30-8 PM Youth Soccer, Sa & Su 8 AM-8 PM Youth Soccer Games	22.5	20	42.5			
	2	M-F 3:30-8 PM Youth Soccer, Sa & Su 8 AM-8 PM Youth Soccer Games	22.5	20	42.5			
	3	M-F 3:30-8 PM Youth Soccer, Sa & Su 8 AM-8 PM Youth Soccer Games	22.5	20	42.5			
	4	M-F 3:30-8 PM Youth Soccer, Sa & Su 8 AM-8 PM Youth Soccer Games	22.5	20	42.5			
November	1	Idle						
	2	Idle						
	3	Idle						
	4	Idle						
December								
Total Hours Used			495	440	935			

Identified Field Users:
Middleboro Youth Soccer Association

Field: Pierce - Battis Field (Game Field Only)

MONTH	Week	Description	Week Day		Weekend		Total Hours Used per Week	Comments
			Hours Used	Hours Used	Hours Used	Hours Used		
Jan		Idle						
Feb		Idle						
Mar	1	Idle						
	2	Idle						
	3	Idle						
	4	Idle						
April	1	Idle						
	2	Idle						
	3	Idle						
	4	Idle						
May	1	Idle						
	2	Idle						
	3	Idle						
	4	Idle						
June	1	Idle						
	2	Idle						
	3	Idle						
	4	Idle						
			30	0	0	30		
July	1	M-F 9 AM-3 PM Playground Activities	30	0	0	30		
	2	M-F 9 AM-3 PM Playground Activities	30	0	0	30		
	3	M-F 9 AM-3 PM Playground Activities	30	0	0	30		
	4	M-F 9 AM-3 PM Playground Activities	30	0	0	30		

Field: Pierce - Battis Field (Game Field Only)

MONTH	Week	Description	Week Day		Weekend		Total Hours Used per Week	Comments
			Hours Used	Hours Used	Hours Used	Hours Used		
August	1	M-F 9 AM-3 PM Playground Activities	30		0		30	
	2	M-F 9 AM-3 PM Playground Activities	30		0		30	
	3	M-F 9 AM-3 PM Playground Activities	30		0		30	
	4	M-F 9 AM-3 PM Playground Activities	30		0		30	
September		M-F Football - 3 Hours total, Soccer -6 Hours total, & Field Hockey - 3 Hours total; Sa Football 9 Hours total	12		9		21	MMC Football - 3 teams; Cobras; MHS Soccer; MHS Field Hockey; MHS Football
	1	M-F Football - 3 Hours total, Soccer -6 Hours total, & Field Hockey - 3 Hours total; Sa Football 9 Hours total	12		9		21	
	2	M-F Football - 3 Hours total, Soccer -6 Hours total, & Field Hockey - 3 Hours total; Sa Football 9 Hours total	12		9		21	
	3	M-F Football - 3 Hours total, Soccer -6 Hours total, & Field Hockey - 3 Hours total; Sa Football 9 Hours total	12		9		21	
October		M-F Football - 3 Hours total, Soccer -6 Hours total, & Field Hockey - 3 Hours total; Sa Football 9 Hours total	12		9		21	
	1	M-F Football - 3 Hours total, Soccer -6 Hours total, & Field Hockey - 3 Hours total; Sa Football 9 Hours total	12		9		21	
	2	M-F Football - 3 Hours total, Soccer -6 Hours total, & Field Hockey - 3 Hours total; Sa Football 9 Hours total	12		9		21	
	3	M-F Football - 3 Hours total, Soccer -6 Hours total, & Field Hockey - 3 Hours total; Sa Football 9 Hours total	12		9		21	
	4	M-F Football - 3 Hours total, Soccer -6 Hours total, & Field Hockey - 3 Hours total; Sa Football 9 Hours total	12		9		21	

Field: Pierce - Battis Field (Game Field Only)

MONTH	Week	Description	Week Day		Weekend		Total Hours Used per Week	Comments
			Hours Used	Hours Used	Hours Used	Hours Used		
November	1	M-F Football - 3 Hours total; Sa Football 7 Hours total.	3	7	7	10		
	2	M-F Football - 3 Hours total; Sa Football 7 Hours total.	3	7	7	10		
	3	Idle						
	4	Idle						
		Idle						
December								
		Total Hours Used	342	86	86	428		

Identified Field Users:

- Town Recreation Department Day Camp Program
- High School Field Hockey Team
- High School Soccer Team
- Cobras Football
- MMC Football
- High School Football Team
- Miscellaneous Special Events

Field: Healey - Soccer #1

MONTH	Week	Description	Week Day		Weekend		Total Hours Used per Week	Comments
			Hours Used	Hours Used	Hours Used	Hours Used		
Jan		Idle						
Feb		Idle						
Mar	1	Idle						
	2	Idle						
	3	Idle						
	4	Idle						
		M-F 3:30-8 PM Youth Practice; Sa & Su 8 AM-6	22.5	20	42.5			
April	1	PM Games	22.5	20	42.5			
	2	PM Games	22.5	20	42.5			
	3	PM Games	22.5	20	42.5			
	4	PM Games	22.5	20	42.5			
		M-F 3:30-8 PM Youth Practice; Sa & Su 8 AM-6	22.5	20	42.5			
May	1	PM Games	22.5	20	42.5			
	2	PM Games	22.5	20	42.5			
	3	PM Games	22.5	20	42.5			
	4	PM Games	22.5	20	42.5			
		M-F 3:30-8 PM Youth Practice; Sa & Su 8 AM-6	22.5	20	42.5			
June	1	PM Games	22.5	20	42.5			
	2	PM Games	22.5	20	42.5			
	3	PM Games	22.5	20	42.5			
	4	PM Games	22.5	20	42.5			
		M-F 3:30-8 PM Youth Practice; Sa & Su 8 AM-6	22.5	20	42.5			
July	1	Idle, unless soccer camp						
	2	Idle, unless soccer camp						
	3	Idle, unless soccer camp						
	4	Idle, unless soccer camp						

Field: Healey - Soccer #1

MONTH	Week	Description	Week Day Hours Used	Weekend Hours Used	Total Hours Used per Week	Comments
August	1	Idle, unless soccer camp				
	2	Idle, unless soccer camp				
	3	Idle, unless soccer camp				
	4	Idle, unless soccer camp				
September	1	M-F 3:30-8 PM Youth Practice; Sa & Su 8 AM-6 PM Games	22.5	20	42.5	
	2	M-F 3:30-8 PM Youth Practice; Sa & Su 8 AM-6 PM Games	22.5	20	42.5	
	3	M-F 3:30-8 PM Youth Practice; Sa & Su 8 AM-6 PM Games	22.5	20	42.5	
	4	M-F 3:30-8 PM Youth Practice; Sa & Su 8 AM-6 PM Games	22.5	20	42.5	
October	1	M-F 3:30-8 PM Youth Practice; Sa & Su 8 AM-6 PM Games	22.5	20	42.5	
	2	M-F 3:30-8 PM Youth Practice; Sa & Su 8 AM-6 PM Games	22.5	20	42.5	
	3	M-F 3:30-8 PM Youth Practice; Sa & Su 8 AM-6 PM Games	22.5	20	42.5	
	4	M-F 3:30-8 PM Youth Practice; Sa & Su 8 AM-6 PM Games	22.5	20	42.5	
November	1	Idle				
	2	Idle				
	3	Idle				
	4	Idle				
December	1	Idle				
	2	Idle				
	3	Idle				
	4	Idle				
Total Hours Used			450	400	850	

Identified Field Users:
Middleboro Youth Soccer Association

Field: Healey - Soccer #2

MONTH	Week	Description	Week Day Hours Used	Weekend Hours Used	Total Hours Used per Week	Comments
Jan		Idle				
Feb		Idle				
Mar	1	Idle				
	2	Idle				
	3	Idle				
	4	Idle				
April	1	M-F 3:30-8 PM Youth Practice; Sa & Su 8 AM-6 PM Games	22.5	20	42.5	
	2	M-F 3:30-8 PM Youth Practice; Sa & Su 8 AM-6 PM Games	22.5	20	42.5	
	3	M-F 3:30-8 PM Youth Practice; Sa & Su 8 AM-6 PM Games	22.5	20	42.5	
	4	M-F 3:30-8 PM Youth Practice; Sa & Su 8 AM-6 PM Games	22.5	20	42.5	
May	1	M-F 3:30-8 PM Youth Practice; Sa & Su 8 AM-6 PM Games	22.5	20	42.5	
	2	M-F 3:30-8 PM Youth Practice; Sa & Su 8 AM-6 PM Games	22.5	20	42.5	
	3	M-F 3:30-8 PM Youth Practice; Sa & Su 8 AM-6 PM Games	22.5	20	42.5	
	4	M-F 3:30-8 PM Youth Practice; Sa & Su 8 AM-6 PM Games	22.5	20	42.5	
June	1	M-F 3:30-8 PM Youth Practice; Sa & Su 8 AM-6 PM Games	22.5	20	42.5	
	2	M-F 3:30-8 PM Youth Practice; Sa & Su 8 AM-6 PM Games	22.5	20	42.5	
	3	M-F 3:30-8 PM Youth Practice; Sa & Su 8 AM-6 PM Games	22.5	20	42.5	
	4	M-F 3:30-8 PM Youth Practice; Sa & Su 8 AM-6 PM Games	22.5	20	42.5	
July	1	Idle, unless soccer camp				
	2	Idle, unless soccer camp				
	3	Idle, unless soccer camp				
	4	Idle, unless soccer camp				

Field: Healey - Soccer #2

MONTH	Week	Description	Week Day Hours Used	Weekend Hours Used	Total Hours Used per Week	Comments
August	1	Idle, unless soccer camp				
	2	Idle, unless soccer camp				
	3	Idle, unless soccer camp				
	4	Idle, unless soccer camp				
September	1	M-F 3:30-8 PM Youth Practice; Sa & Su 8 AM-6 PM Games	22.5	20	42.5	
	2	M-F 3:30-8 PM Youth Practice; Sa & Su 8 AM-6 PM Games	22.5	20	42.5	
	3	M-F 3:30-8 PM Youth Practice; Sa & Su 8 AM-6 PM Games	22.5	20	42.5	
	4	M-F 3:30-8 PM Youth Practice; Sa & Su 8 AM-6 PM Games	22.5	20	42.5	
October	1	M-F 3:30-8 PM Youth Practice; Sa & Su 8 AM-6 PM Games	22.5	20	42.5	
	2	M-F 3:30-8 PM Youth Practice; Sa & Su 8 AM-6 PM Games	22.5	20	42.5	
	3	M-F 3:30-8 PM Youth Practice; Sa & Su 8 AM-6 PM Games	22.5	20	42.5	
	4	M-F 3:30-8 PM Youth Practice; Sa & Su 8 AM-6 PM Games	22.5	20	42.5	
November	1	Idle				
	2	Idle				
	3	Idle				
	4	Idle				
December						
Total Hours Used			450	400	850	

Identified Field Users:
Middleboro Youth Soccer Association

Field: Healey - Soccer #3

MONTH	Week	Description	Week Day		Weekend		Total		Comments
			Hours Used	Hours Used	Hours Used	Hours Used	Hours Used per Week	Hours Used per Week	
Jan		Resting Field							
		Resting Field							
	1	Resting Field							
	2	Resting Field							
Feb	3	Resting Field							
	4	Resting Field							
	1	Resting Field							
	2	Resting Field							
Mar	3	Resting Field							
	4	Resting Field							
	1	Resting Field							
	2	Resting Field							
April	3	Resting Field							
	4	Resting Field							
	1	Resting Field							
	2	Resting Field							
May	3	Resting Field							
	4	Resting Field							
	1	Resting Field							
	2	Resting Field							
June	3	Resting Field							
	4	Resting Field							
	1	Resting Field							
	2	Resting Field							
July	3	Resting Field							
	4	Resting Field							
	1	Resting Field							
	2	Resting Field							
August	3	Resting Field							
	4	Resting Field							
	1	Resting Field							
	2	Resting Field							
	3	Resting Field							
	4	Resting Field							

Field: Healey - Soccer #3

MONTH	Week	Description	Week Day		Weekend		Total Hours Used per Week	Comments
			Hours Used	Hours Used	Hours Used	Hours Used		
September	1	Resting Field						
	2	Resting Field						
	3	Resting Field						
	4	Resting Field						
October	1	Resting Field						
	2	Resting Field						
	3	Resting Field						
	4	Resting Field						
November	1	Resting Field						
	2	Resting Field						
	3	Resting Field						
	4	Resting Field						
December								
		Total Hours Used						

Identified Field Users:

Rev: 8 September 2003
 G:\Transportation\Middleborough\Master Plan\field study report Docs\Prelim analysis-Revised 8SEP03\Time Scheduled by field.xls\Healy Soccer #3

Field: Field of Dreams - Multi-Use Soccer

MONTH	Week	Description	Week Day Hours Used	Weekend Hours Used	Total Hours Used per Week	Comments
Jan		Idle				
Feb		Idle				
Mar	1	Idle				
	2	Idle				
	3	Idle				
	4	Idle				
April		M-F School P.E. at various times and 3:30-8 PM Youth Soccer; Sa & Su 8 AM-6 PM Youth Soccer	22.5	20	42.5	
	1	Games				
		M-F School P.E. at various times and 3:30-8 PM Youth Soccer; Sa & Su 8 AM-6 PM Youth Soccer	22.5	20	42.5	
	2	Games				
		M-F School P.E. at various times and 3:30-8 PM Youth Soccer; Sa & Su 8 AM-6 PM Youth Soccer	22.5	20	42.5	
	3	Games				
		M-F School P.E. at various times and 3:30-8 PM Youth Soccer; Sa & Su 8 AM-6 PM Youth Soccer	22.5	20	42.5	
	4	Games				
May		M-F School P.E. at various times and 3:30-8 PM Youth Soccer; Sa & Su 8 AM-6 PM Youth Soccer	22.5	20	42.5	
	1	Games				
		M-F School P.E. at various times and 3:30-8 PM Youth Soccer; Sa & Su 8 AM-6 PM Youth Soccer	22.5	20	42.5	
	2	Games				
		M-F School P.E. at various times and 3:30-8 PM Youth Soccer; Sa & Su 8 AM-6 PM Youth Soccer	22.5	20	42.5	
	3	Games				
		M-F School P.E. at various times and 3:30-8 PM Youth Soccer; Sa & Su 8 AM-6 PM Youth Soccer	22.5	20	42.5	
	4	Games				

Field: Field of Dreams - Multi-Use Soccer

MONTH	Week	Description	Week Day		Weekend		Total Hours Used per Week	Comments
			Hours Used	Hours Used	Hours Used	Hours Used		
June	1	M-F School P.E. at various times and 3:30-8 PM Youth Soccer; Sa & Su 8 AM-6 PM Youth Soccer Games	22.5	20	42.5			
	2	M-F School P.E. at various times and 3:30-8 PM Youth Soccer; Sa & Su 8 AM-6 PM Youth Soccer Games	22.5	20	42.5			
	3	M-F School P.E. at various times and 3:30-8 PM Youth Soccer; Sa & Su 8 AM-6 PM Youth Soccer Games	22.5	20	42.5			
	4	M-F School P.E. at various times and 3:30-8 PM Youth Soccer; Sa & Su 8 AM-6 PM Youth Soccer Games	22.5	20	42.5			
July	1	Idle						
	2	Idle						
	3	Idle						
	4	Idle						
August	1	Idle						
	2	Idle						
	3	M-F 3:30-8 PM Youth Practice; Sa & Su 8 AM-6 PM Youth Soccer Games	22.5	20	42.5			
	4	M-F 3:30-8 PM Youth Soccer; Sa & Su 8 AM-8 PM Youth Soccer Games	22.5	20	42.5			
September	1	M-F 3:30-8 PM Youth Soccer; Sa & Su 8 AM-8 PM Youth Soccer Games	22.5	20	42.5			
	2	M-F 3:30-8 PM Youth Soccer; Sa & Su 8 AM-8 PM Youth Soccer Games	22.5	20	42.5			
	3	M-F 3:30-8 PM Youth Soccer; Sa & Su 8 AM-8 PM Youth Soccer Games	22.5	20	42.5			
	4	M-F 3:30-8 PM Youth Soccer; Sa & Su 8 AM-8 PM Youth Soccer Games	22.5	20	42.5			

Field: Field of Dreams - Multi-Use Soccer

MONTH	Week	Description	Week Day		Weekend		Total Hours Used per Week	Comments
			Hours Used	Hours Used	Hours Used	Hours Used		
October	1	M-F 3:30-8 PM Youth Soccer; Sa & Su 8 AM-8 PM Youth Soccer Games	22.5		20		42.5	
	2	M-F 3:30-8 PM Youth Soccer; Sa & Su 8 AM-8 PM Youth Soccer Games	22.5		20		42.5	
	3	M-F 3:30-8 PM Youth Soccer; Sa & Su 8 AM-8 PM Youth Soccer Games	22.5		20		42.5	
	4	M-F 3:30-8 PM Youth Soccer; Sa & Su 8 AM-8 PM Youth Soccer Games	22.5		20		42.5	
November	1	/idle						
	2	/idle						
	3	/idle						
	4	/idle						
December								
Total Hours Used			495		440		935	

Identified Field Users:
Middleboro Youth Soccer Association

Field: West Side - Soccer Practice Area

MONTH	Week	Description	Week Day		Weekend		Total Hours Used per Week	Comments
			Hours Used	Hours Used	Hours Used	Hours Used		
Jan		/d/e						
Feb		/d/e						
Mar	1	/d/e						
	2	/d/e						
	3	/d/e						
	4	/d/e						
April	1	/d/e						
	2	/d/e						
	3	/d/e						
	4	/d/e						
May	1	/d/e						
	2	/d/e						
	3	/d/e						
	4	/d/e						
June	1	/d/e						
	2	/d/e						
	3	/d/e						
	4	/d/e						
July	1	/d/e						
	2	/d/e						
	3	/d/e						
	4	/d/e						
August	1	/d/e						
	2	/d/e						
	3	/d/e						
	4	/d/e						

Field: West Side - Soccer Practice Area

MONTH	Week	Description	Week Day Hours Used	Weekend Hours Used	Total Hours Used per Week	Comments
September	1	Idle				
	2	Idle				
	3	Idle				
	4	Idle				
October	1	Idle				
	2	Idle				
	3	Idle				
	4	Idle				
November	1	Idle				
	2	Idle				
	3	Idle				
	4	Idle				
December						
Total Hours Used			0	0	0	

Identified Field Users:

Notes:
 1. This field, located between the two baseball outfield fences, is only occasionally used for Soccer practice.

Field: Nichols - Soccer

MONTH	Week	Description	Week Day		Weekend		Total Hours Used per Week	Comments
			Hours Used	Hours Used	Hours Used	Hours Used		
Jan		/d/e						
Feb		/d/e						
Mar	1	/d/e						
	2	/d/e						
	3	/d/e						
	4	/d/e						
April	1	/d/e						
	2	/d/e						
	3	/d/e						
	4	/d/e						
May	1	/d/e						
	2	/d/e						
	3	/d/e						
	4	/d/e						
June	1	/d/e						
	2	/d/e						
	3	/d/e						
	4	/d/e						
July	1	/d/e						
	2	/d/e						
	3	/d/e						
	4	/d/e						

Field: Nichols - Soccer

MONTH	Week	Description	Week Day Hours Used	Weekend Hours Used	Total Hours Used per Week	Comments
August	1	/dle				
	2	/dle				
	3	/dle				
	4	/dle				
September	1	M-Th 2:30 PM - 3:30 PM Soccer Intramurals	4	0	4	
	2	M-Th 2:30 PM - 3:30 PM Soccer Intramurals	4	0	4	
	3	M-Th 2:30 PM - 3:30 PM Soccer Intramurals	4	0	4	
	4	M-Th 2:30 PM - 3:30 PM Soccer Intramurals	4	0	4	
October	1	M-Th 2:30 PM - 3:30 PM Soccer Intramurals	4	0	4	
	2	M-Th 2:30 PM - 3:30 PM Soccer Intramurals	4	0	4	
	3	M-Th 2:30 PM - 3:30 PM Soccer Intramurals	4	0	4	
	4	M-Th 2:30 PM - 3:30 PM Soccer Intramurals	4	0	4	
November	1	/dle				
	2	/dle				
	3	/dle				
	4	/dle				
December	1	/dle				
	2	/dle				
	3	/dle				
	4	/dle				
Total Hours Used			32	0	32	

Identified Field Users:

Field: High School Football Practice Field/Track

MONTH	Week	Description	Week Day		Weekend	Total
			Hours Used	Hours Used		
Jan		Idle				
Feb		Idle				
Mar	1	Idle				
	2	Idle				
	3	M-F 2:30-5 PM & Sa9 AM-12 PM Track & Field	12.5	3		15.5
	4	M-F 2:30-5 PM & Sa9 AM-12 PM Track & Field	12.5	3		15.5
	1	M-F 2:30-5 PM & Sa9 AM-12 PM Track & Field	12.5	3		15.5
	2	M-F 2:30-5 PM & Sa9 AM-12 PM Track & Field	12.5	3		15.5
April	3	M-F 2:30-5 PM & Sa9 AM-12 PM Track & Field	12.5	3		15.5
	4	M-F 2:30-5 PM & Sa9 AM-12 PM Track & Field	12.5	3		15.5
	1	M-F 2:30-5 PM & Sa9 AM-12 PM Track & Field	12.5	3		15.5
	2	M-F 2:30-5 PM & Sa9 AM-12 PM Track & Field	12.5	3		15.5
May	3	M-F 2:30-5 PM & Sa9 AM-12 PM Track & Field	12.5	3		15.5
	4	M-F 2:30-5 PM & Sa9 AM-12 PM Track & Field	12.5	3		15.5
	1	M-F 2:30-5 PM & Sa9 AM-12 PM Track & Field	12.5	3		15.5
	2	M-F 2:30-5 PM & Sa9 AM-12 PM Track & Field	12.5	3		15.5
	3	M-F 2:30-5 PM & Sa9 AM-12 PM Track & Field	12.5	3		15.5
	4	M-F 2:30-5 PM & Sa9 AM-12 PM Track & Field	12.5	3		15.5
	1	M-Th 5-8 PM Cobra Football Practice	12	0		12
	2	M-Th 5-8 PM Cobra Football Practice	12	0		12
June	3	M-Th 5-8 PM Cobra Football Practice	12	0		12
	4	M-Th 5-8 PM Cobra Football Practice	12	0		12

Field: High School Football Practice Field/Track

MONTH	Week	Description	Week Day		Weekend		Total Hours Used per Week	Comments
			Hours Used	Hours Used	Hours Used	Hours Used		
July	1	/dle						
	2	/dle						
	3	/dle						
	4	/dle						
August	1	/dle						
	2	/dle						
		M-F 9 AM-12 PM & 4-7 PM Double Sessions - MHS Football Practice	30	0	0	0	30	
	3	M-F 9 AM-12 PM & 4-7 PM Double Sessions - MHS Football Practice	30	0	0	0	30	
	4	MHS Football Practice	15	0	0	0	15	
	1	M-F 2-5 PM MHS Football Practice	15	0	0	0	15	
September	2	M-F 2-5 PM MHS Football Practice	15	0	0	0	15	
	3	M-F 2-5 PM MHS Football Practice	15	0	0	0	15	
	4	M-F 2-5 PM MHS Football Practice	15	0	0	0	15	
	1	M-F 2-5 PM MHS Football Practice	15	0	0	0	15	
October	2	M-F 2-5 PM MHS Football Practice	15	0	0	0	15	
	3	M-F 2-5 PM MHS Football Practice	15	0	0	0	15	
	4	M-F 2-5 PM MHS Football Practice	15	0	0	0	15	
	1	M-F 2-5 PM MHS Football Practice	15	0	0	0	15	
November	2	M-F 2-5 PM MHS Football Practice	15	0	0	0	15	
	3	M-F 2-5 PM MHS Football Practice	15	0	0	0	15	
	4	M-F 2-5 PM MHS Football Practice	15	0	0	0	15	
	1	M-F 2-5 PM MHS Football Practice	15	0	0	0	15	
December	2	M-F 2-5 PM MHS Football Practice	15	0	0	0	15	
	3	M-F 2-5 PM MHS Football Practice	15	0	0	0	15	
	4	M-F 2-5 PM MHS Football Practice	15	0	0	0	15	
		/dle						
Total Hours Used			413			30	443	

Identified Field Users:
 High School Track & Field/Cross Country Team
 High School Football Team
 Cobras Football

Appendix B

Field Time Utilization - Summary

Assumed for the purposes of the calculation below:

1. For fields other than Soccer, the use time shall be M-F 2:30-5:00 PM or 12.5 hours or schedulable time for school restricted use period per field.
2. For fields other than Soccer, the use time shall be M-F 5:00-8:00 PM and Sat./Sun 8 AM-8PM or 39 hours or schedulable time for unrestricted use period per field.
3. For Soccer, the use period shall be Sat./Sun 8AM-8PM or 24 hours of schedulable time per field, as soccer does not play games during the week
4. The time scheduled for the following fields shall be reduced by the given field factor to enable comparasin of all soccer fields to a full size field.
5. All Time shown below is indicated as "hours per week".

Spring Season Sports						
	School Use Period		Unrestricted Use Period		Total Both Periods	
Baseball 90' Hours Used	53	Hours	89.25	Hours	142.25	Hours
Number fields available	3		3			
Potential Hours Available	37.5	Hours	117	Hours	154.5	Hours
Net Hours Available	-15.5	Hours	27.75	Hours	12.25	Hours
Baseball 60' Hours Used	0	Hours	260.4	Hours	260.4	Hours
Number fields available	6		6			
Potential Hours Available	75	Hours	234	Hours	309	Hours
Net Hours Available	75	Hours	-26.4	Hours	48.6	Hours
Teeball Hours Used	0	Hours	73.2	Hours	73.2	Hours
Number fields available	4		4			
Potential Hours Available	50	Hours	156	Hours	206	Hours
Net Hours Available	50	Hours	82.8	Hours	132.8	Hours
Softball Hours Used	57	Hours	145.776	Hours	202.776	Hours
Number fields available	7		7			
Potential Hours Available	87.5	Hours	273	Hours	360.5	Hours
Net Hours Available	30.5	Hours	127.224	Hours	157.724	Hours
Soccer Hours Used	28.2	Hours	112.8	Hours	141	Hours
Number fields available	8		8			
Potential Hours Available	100	Hours	192	Hours	292	Hours
Net Hours Available	71.8	Hours	79.2	Hours	151	Hours
Football Hours Used	9	Hours	0	Hours	9	Hours
Number fields available	5		5			
Potential Hours Available	62.5	Hours	195	Hours	257.5	Hours
Net Hours Available	53.5	Hours	195	Hours	248.5	Hours

Field Time Utilization - Summary

Assumed for the purposes of the calculation below:

Summer Season Sports				
	School Use Period		Unrestricted Use Period	
Baseball 90' hours used	4	Hours	18	Hours
Number fields available	3		3	
Number fields available	5		5	10 Hours
Potential Hours Available	62.5	Hours	195	Hours
				22 Hours
Baseball 60' Hours Used	6	Hours	256.8	Hours
Number fields available	6		6	
Number fields available	5		5	10 Hours
Potential Hours Available	62.5	Hours	195	Hours
				257.5 Hours
Teeball Hours Used	0	Hours	67.2	Hours
Number fields available	4		4	
Number fields available	5		5	10 Hours
Potential Hours Available	62.5	Hours	195	Hours
				257.5 Hours
Softball Hours Used	88.8	Hours	27.6	Hours
Number fields available	7		7	
Number fields available	5		5	10 Hours
Potential Hours Available	62.5	Hours	195	Hours
				257.5 Hours
Soccer Hours Used	88.2	Hours	27.6	Hours
Number fields available	8		8	
Potential Hours Available	100	Hours	192	Hours
Net Hours Available	11.8	Hours	164.4	Hours
				176.2 Hours
Football Hours Used	60	Hours	170.7	Hours
Number fields available	5		5	
Number fields available	5		5	10 Hours
Potential Hours Available	62.5	Hours	195	Hours
				257.5 Hours

Field Time Utilization - Summary

Assumed for the purposes of the calculation below:

Fall Season Sports					
	School Use Period		Unrestricted Use Period		
Baseball 90' Hours used	15	Hours	16.8	Hours	31.8 Hours
Number fields available	3		3		
Number fields available	5		5		10 Hours
Potential Hours Available	62.5	Hours	195	Hours	257.5 Hours
Baseball 60' Hours Used	0	Hours	43.2	Hours	43.2 Hours
Number fields available	6		6		
Number fields available	5		5		10 Hours
Potential Hours Available	62.5	Hours	195	Hours	257.5 Hours
Teeball Hours Used	12	Hours	18	Hours	30 Hours
Number fields available	4		4		
Number fields available	5		5		10 Hours
Potential Hours Available	62.5	Hours	195	Hours	257.5 Hours
Softball Hours Used	0	Hours	48	Hours	48 Hours
Number fields available	7		7		
Number fields available	5		5		10 Hours
Potential Hours Available	62.5	Hours	195	Hours	257.5 Hours
Soccer Hours Used	81	Hours	99.6	Hours	180.6 Hours
Number fields available	8		8		
Potential Hours Available	100	Hours	192	Hours	292 Hours
Net Hours Available	19	Hours	92.4	Hours	111.4 Hours
Football Hours Used	97.2	Hours	96.3	Hours	193.5 Hours
Number fields available	5		5		
Number fields available	5		5		10 Hours
Potential Hours Available	62.5	Hours	195	Hours	257.5 Hours

Field Time Utilization - Detailed Calculations - Spring

Field User/Description	Team Quantity	Game Length (Hours)	Game Rate	Game Factor	Practice Length (Hours)	Practice Rate	Field Factor	Hours per Week Used
Football - School Use Period								
Time used by shared field conditions								7.5
Rain Time: 1 Hr/Week/Division								
Setup/takedown (+20% of Total)								1.5
Total Hours Used Per Week								9.0
Football - Unrestricted Use Period								
Time used by shared field conditions								0.0
Rain Time: 1 Hr/Week/Division								
Setup/takedown (+20% of Total)								
Total Hours Used Per Week								0.0

Revised 8 September 2003

Field Time Utilization - Detailed Calculations - Summer

Field User/Description	Team Quantity	Game Length (Hours)	Game Rate	Game Factor	Practice Length (Hours)	Practice Rate	Field Factor	Hours per Week Used
Football - School Use Period								
Time used by shared field conditions								50
Rain Time: 1 Hr/Week/Division								
Setup/takedown (+20% of Total)								10
Total Hours Used Per Week								60
Football - Unrestricted Use Period								
MMC Football	6	1	1	0.5	1.5	4	1	39
Cobra Football	1	3	1	0.5	2.5	2	1	6.5
MHS Football	3	2	1	0.5	3	5	1	48
MMC Cheerleaders	6	1	1	0.5	2	2	0.25	6.75
Time used by shared field conditions								38
Rain Time: 1 Hr/Week/Division								4
Setup/takedown (+20% of Total)								28.45
Total Hours Used Per Week								170.7

Revised 8 September 2003

Field Time Utilization - Detailed Calculations - Fall

Field User/Description	Team Quantity	Game Length (Hours)	Game Rate	Game Factor	Practice Length (Hours)	Practice Rate	Field Factor	Hours per Week Used
Football - School Use Period								
MHS Football	3				3	5	1	45
Time used by shared field conditions								35
Rain Time: 1 Hr/Week/Division								1
Setup/takedown (+20% of Total)								16.2
Total Hours Used Per Week								97.2
Football - Unrestricted Use Period								
MMC Football	6	1	1	0.5	1.5	4	1	39
Cobra Football	1	3	1	0.5	2.5	2	1	6.5
MHS Football	3	2	1	0.5	0	0	1	3
MMC Cheerleaders	6	1	1	0.5	2	2	0.25	6.75
Time used by shared field conditions								21
Rain Time: 1 Hr/Week/Division								4
Setup/takedown (+20% of Total)								16.05
Total Hours Used Per Week								96.3

Revised 8 September 2003

Appendix C

Field Time Projection - Summary

Assumed for the purposes of the calculation below:

1. For fields other than Soccer, the use time shall be M-F 2:30-5:00 PM or 12.5 hours or schedulable time for school restricted use period per field.
2. For fields other than Soccer, the use time shall be M-F 5:00-8:00 PM and Sat./Sun 8 AM-8PM or 39 hours or schedulable time for unrestricted use period per field.
3. For Soccer, the use period shall be Sat./Sun 8AM-8PM or 24 hours of schedulable time per field, as soccer does not play games during the week
4. The time scheduled for the following fields shall be reduced by the given field factor to enable comparasin of all soccer fields to a full size field.
5. All Time shown below is indicated as "hours per week".

Spring Season Sports						
	School Use Period		Unrestricted Use Period		Total Both Periods	
Baseball 90' Hours Used	53	Hours	99.15	Hours	152.15	Hours
Number fields available	3		3			
Potentail Hours Available	37.5	Hours	117	Hours	154.5	Hours
Net Hours Available	-15.5	Hours	17.85	Hours	2.35	Hours
Baseball 60' Hours Used	0	Hours	327.6	Hours	327.6	Hours
Number fields available	6		6			
Potentail Hours Available	75	Hours	234	Hours	309	Hours
Net Hours Available	75	Hours	-93.6	Hours	-18.6	Hours
Teeball Hours Used	0	Hours	73.2	Hours	73.2	Hours
Number fields available	4		4			
Potentail Hours Available	50	Hours	156	Hours	206	Hours
Net Hours Available	50	Hours	82.8	Hours	132.8	Hours
Softball Hours Used	57	Hours	260.976	Hours	317.976	Hours
Number fields available	7		7			
Potentail Hours Available	87.5	Hours	273	Hours	360.5	Hours
Net Hours Available	30.5	Hours	12.024	Hours	42.524	Hours
Soccer Hours Used	28.2	Hours	112.8	Hours	141	Hours
Number fields available	8		8			
Potentail Hours Available	100	Hours	192	Hours	292	Hours
Net Hours Available	71.8	Hours	79.2	Hours	151	Hours
Football Hours Used	9	Hours	0	Hours	9	Hours
Number fields available	5		5			
Potentail Hours Available	62.5	Hours	195	Hours	257.5	Hours
Net Hours Available	53.5	Hours	195	Hours	248.5	Hours

Field Time Projection - Summary

Assumed for the purposes of the calculation below:

Summer Season Sports				
	School Use Period		Unrestricted Use Period	
Baseball 90' hours used	4	Hours	18	Hours
Number fields available	3		3	
Number fields available	5		5	10 Hours
Potential Hours Available	62.5	Hours	195	Hours
				257.5 Hours
Baseball 60' Hours Used	6	Hours	324	Hours
Number fields available	6		6	
Number fields available	5		5	10 Hours
Potential Hours Available	62.5	Hours	195	Hours
				257.5 Hours
Teeball Hours Used	0	Hours	67.2	Hours
Number fields available	4		4	
Number fields available	5		5	10 Hours
Potential Hours Available	62.5	Hours	195	Hours
				257.5 Hours
Softball Hours Used	14.8	Hours	27.6	Hours
Number fields available	7		7	
Number fields available	5		5	10 Hours
Potential Hours Available	62.5	Hours	195	Hours
				257.5 Hours
Soccer Hours Used	88.2	Hours	27.6	Hours
Number fields available	8		8	
Potential Hours Available	100	Hours	192	Hours
Net Hours Available	11.8	Hours	164.4	Hours
				176.2 Hours
Football Hours Used	60	Hours	240.9	Hours
Number fields available	5		5	
Number fields available	5		5	10 Hours
Potential Hours Available	62.5	Hours	195	Hours
				257.5 Hours

Field Time Projection - Summary

Assumed for the purposes of the calculation below:

Fall Season Sports					
	School Use Period		Unrestricted Use Period		
Baseball 90' Hours used	15	Hours	16.8	Hours	31.8 Hours
Number fields available	3		3		
Number fields available	5		5		10 Hours
Potential Hours Available	62.5	Hours	195	Hours	257.5 Hours
Baseball 60' Hours Used	0	Hours	43.2	Hours	43.2 Hours
Number fields available	6		6		
Number fields available	5		5		10 Hours
Potential Hours Available	62.5	Hours	195	Hours	257.5 Hours
Teeball Hours Used	12	Hours	18	Hours	30 Hours
Number fields available	4		4		
Number fields available	5		5		10 Hours
Potential Hours Available	62.5	Hours	195	Hours	257.5 Hours
Softball Hours Used	0	Hours	48	Hours	48 Hours
Number fields available	7		7		
Number fields available	5		5		10 Hours
Potential Hours Available	62.5	Hours	195	Hours	257.5 Hours
Soccer Hours Used	90	Hours	198	Hours	288 Hours
Number fields available	8		8		
Potential Hours Available	100	Hours	192	Hours	292 Hours
Net Hours Available	10	Hours	-6	Hours	4 Hours
Football Hours Used	97.2	Hours	166.5	Hours	263.7 Hours
Number fields available	5		5		
Number fields available	5		5		10 Hours
Potential Hours Available	62.5	Hours	195	Hours	257.5 Hours

Field Time Projection - Detailed Calculations - Spring

Field User/Description	Team Quantity	Game Length (Hours)	Game Rate	Game Factor	Practice Length (Hours)	Practice Rate	Field Factor	Hours per Week Used
Football - School Use Period								
Time used by shared field conditions								7.5
Rain Time:1 Hr/Week/Division								
Setup/takedown (+20% of Total)								1.5
Total Hours Used Per Week								9.0
Football - Unrestricted Use Period								
Time used by shared field conditions								0.0
Rain Time:1 Hr/Week/Division								
Setup/takedown (+20% of Total)								0.0
Total Hours Used Per Week								0.0

Revised 8 September 2003

Field Time Projection - Detailed Calculations - Summer

Field User/Description	Team Quantity	Game Length (Hours)	Game Rate	Game Factor	Practice Length (Hours)	Practice Rate	Field Factor	Hours per Week Used
Football - School Use Period								
Time used by shared field conditions								50
Rain Time: 1 Hr/Week/Division								
Setup/takedown (+20% of Total)								10
Total Hours Used Per Week								60
Football - Unrestricted Use Period								
MMC Football	6	1	1	0.5	1.5	4	1	39
Cobra Football	1	3	1	0.5	2.5	2	1	6.5
MHS Football	3	2	1	0.5	3	5	1	48
MMC Cheerleaders	6	1	1	0.5	2	2	0.25	6.75
MMC Projected use	9	1	1	0.5	1.5	4	1	58.5
Time used by shared field conditions								38
Rain Time: 1 Hr/Week/Division								4
Setup/takedown (+20% of Total)								40.15
Total Hours Used Per Week								240.9

Revised 8 September 2003

Field Time Projection - Detailed Calculations - Fall

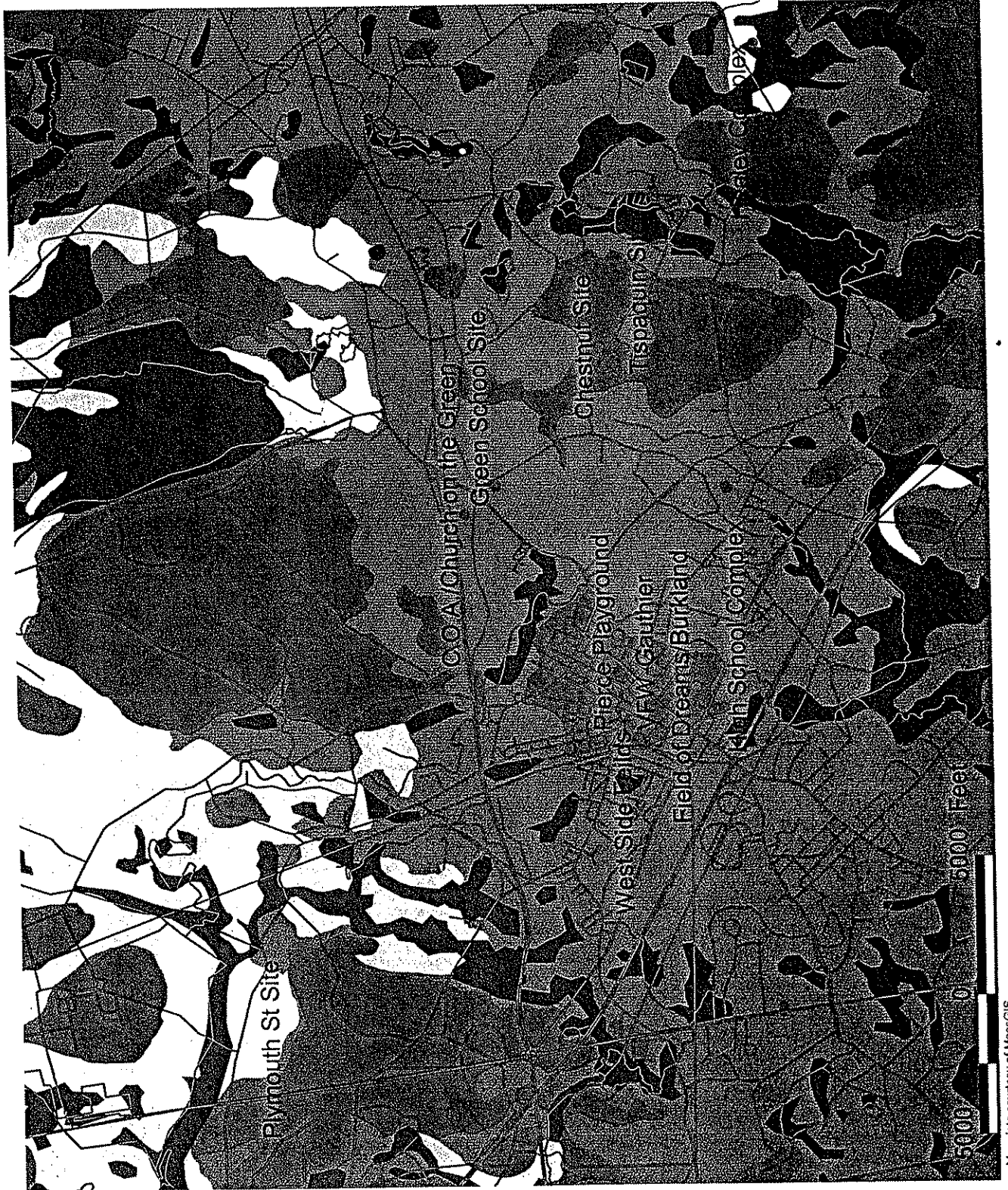
Field User/Description	Team Quantity	Game Length (Hours)	Game Rate	Game Factor	Practice Length (Hours)	Practice Rate	Field Factor	Hours per Week Used
Football - School Use Period								
MHS Football	3				3	5	1	45
Time used by shared field conditions								35
Rain Time: 1 Hr/Week/Division								1
Setup/takedown (+20% of Total)								16.2
Total Hours Used Per Week								97.2
Football - Unrestricted Use Period								
MMC Football	6	1	1	0.5	1.5	4	1	39
Cobra Football	1	3	1	0.5	2.5	2	1	6.5
MHS Football	3	2	1	0.5	0	0	1	3
MMC Cheerleaders	6	1	1	0.5	2	2	0.25	6.75
MMC Projected use	9	1	1	0.5	1.5	4	1	58.5
Time used by shared field conditions								21
Rain Time: 1 Hr/Week/Division								4
Setup/takedown (+20% of Total)								27.75
Total Hours Used Per Week								166.5

Revised 8 September 2003

Appendix D



Surficial Geology



- LEGEND**
- New Field Sites
 - Roads
 - Surficial Geology**
 - Sand & Gravel Dep
 - Large Sand Dep
 - Fine Grained Dep
 - Till or Bedrock
 - Sandy Till over Sand
 - End Moraines
 - Floodplain Alluvium



Natural Heritage & Endangered Species Program Data



NHESP 1999-2001 Priority Habitats for State-Protected Rare Species: NOT Equivalent to "Significant Habitat" as designated under Massachusetts Endangered Species Act.

NHESP 1999-2001 Estimated Habitat of Rare Wildlife: For Use with the MA Wetlands Protection Act regulations (310 CMR 10).

- LEGEND**
- Field Sites
 - Roads
 - Major Streams & Rivers
 - ▨ Major Ponds, Lakes or Open Water
 - ▩ NHESP 1999-2001 Priority Habitat of Rare Species
 - ▧ SNL Habitat
 - ▦ NHESP Estimated Habitat of Rare Wildlife
 - ▤ Bloccore Habitat



National Wetlands Inventory Map



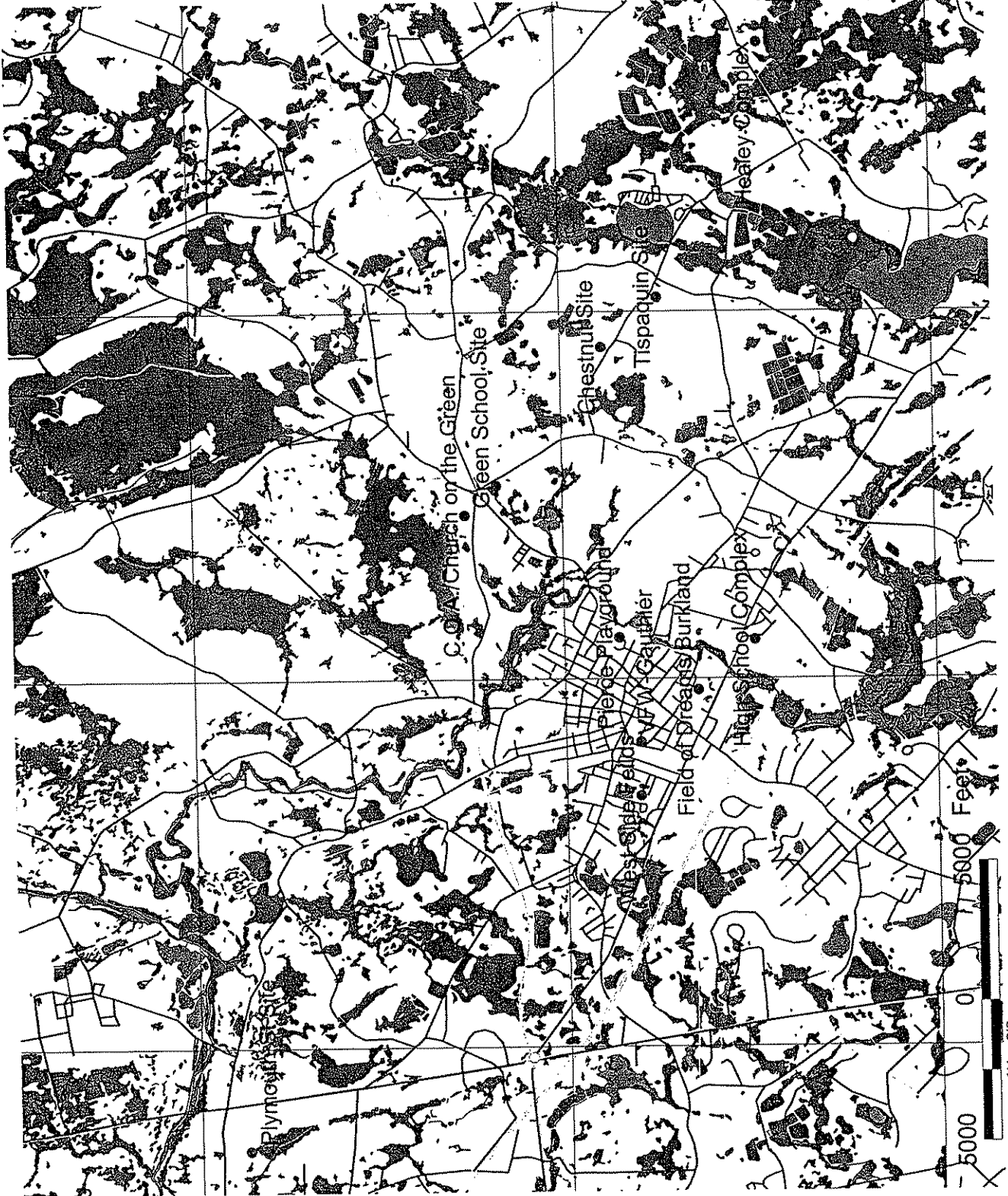
LEGEND

- New Field Sites
- ~ Brook/Stream
- Roads
- National Wetlands Inventory Areas
 - Upland Area
 - Pred. Open Water
 - Non-tidal, Aquatic Bed
 - Non-tidal, Emerg Veg
 - Forested Wetlands
 - Non-tidal Scrub Shrub
 - Non-tidal Unconsolidated Shore





Orthophoto Wetlands, Major Ponds, Lakes, Streams & Rivers



LEGEND

- Field Sites
- Roads
- Major Streams & Rivers
- Major Ponds, Lakes or Open Water
- Wetland Resource Areas
- Upland Areas



Vernal Pools



NHESP 1999-2001 Certified Vernal Pools

NHESP Potential Vernal Pools:
NOT equivalent to Certified Vernal Pools

LEGEND

- Field Sites
- Roads
- ~ Major Streams & Rivers
- Major Ponds, Lakes or Open Water
- Certified Vernal Pool
- Potential Vernal Pool



Map data courtesy of MassGIS



Areas of Critical Environmental Concern

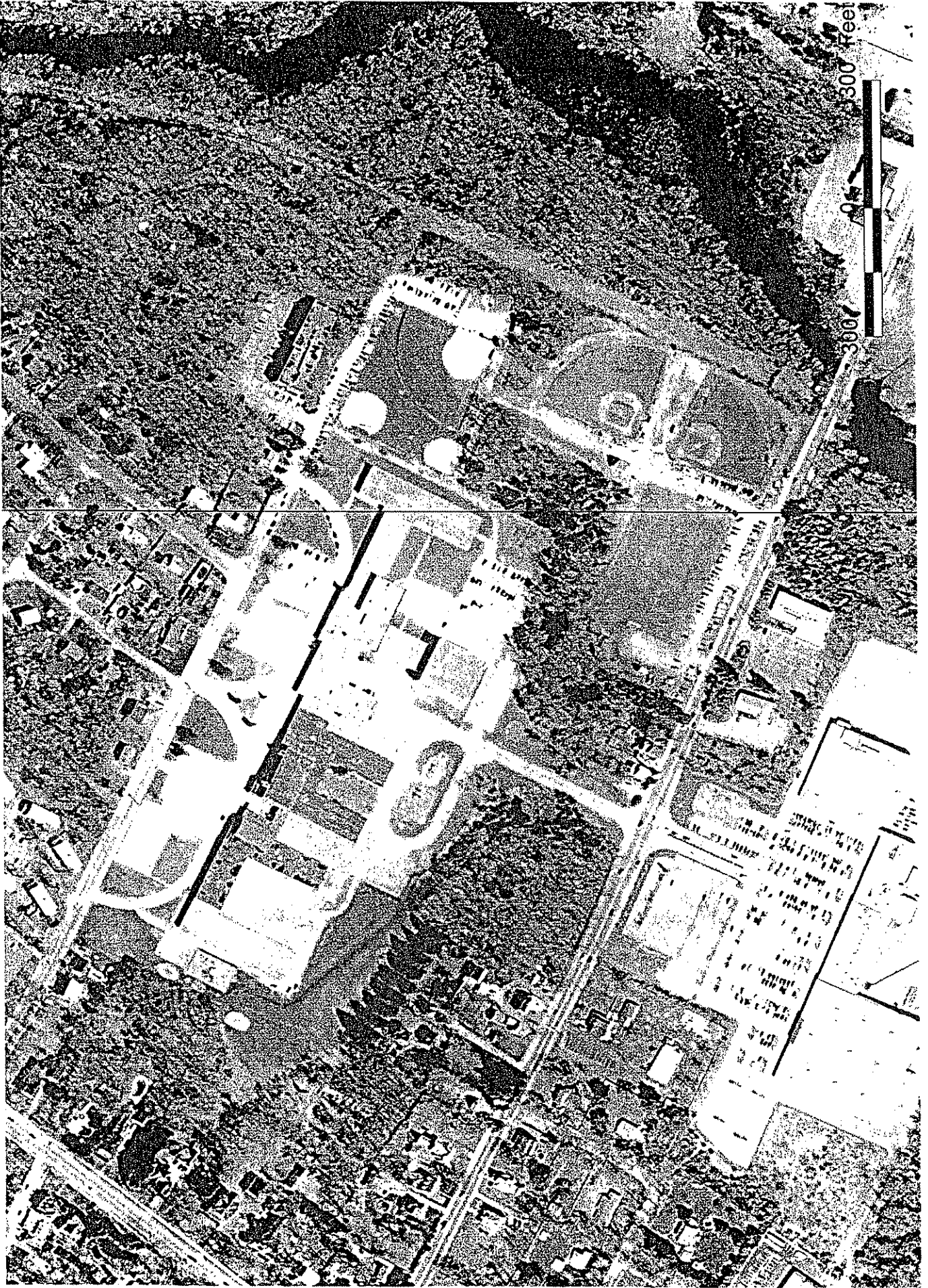


LEGEND

- Field Sites
- Roads
- ~ Streams & Rivers
- ▨ Major Ponds, Lakes or Open Water
- Areas of Critical Environmental Concern



Burkland/Mayflower/Field of Dreams Complex



West Side Fields



Purchase Street Complex



200 400 feet



High School Complex





Pierce Playground



200

200

400 Feet

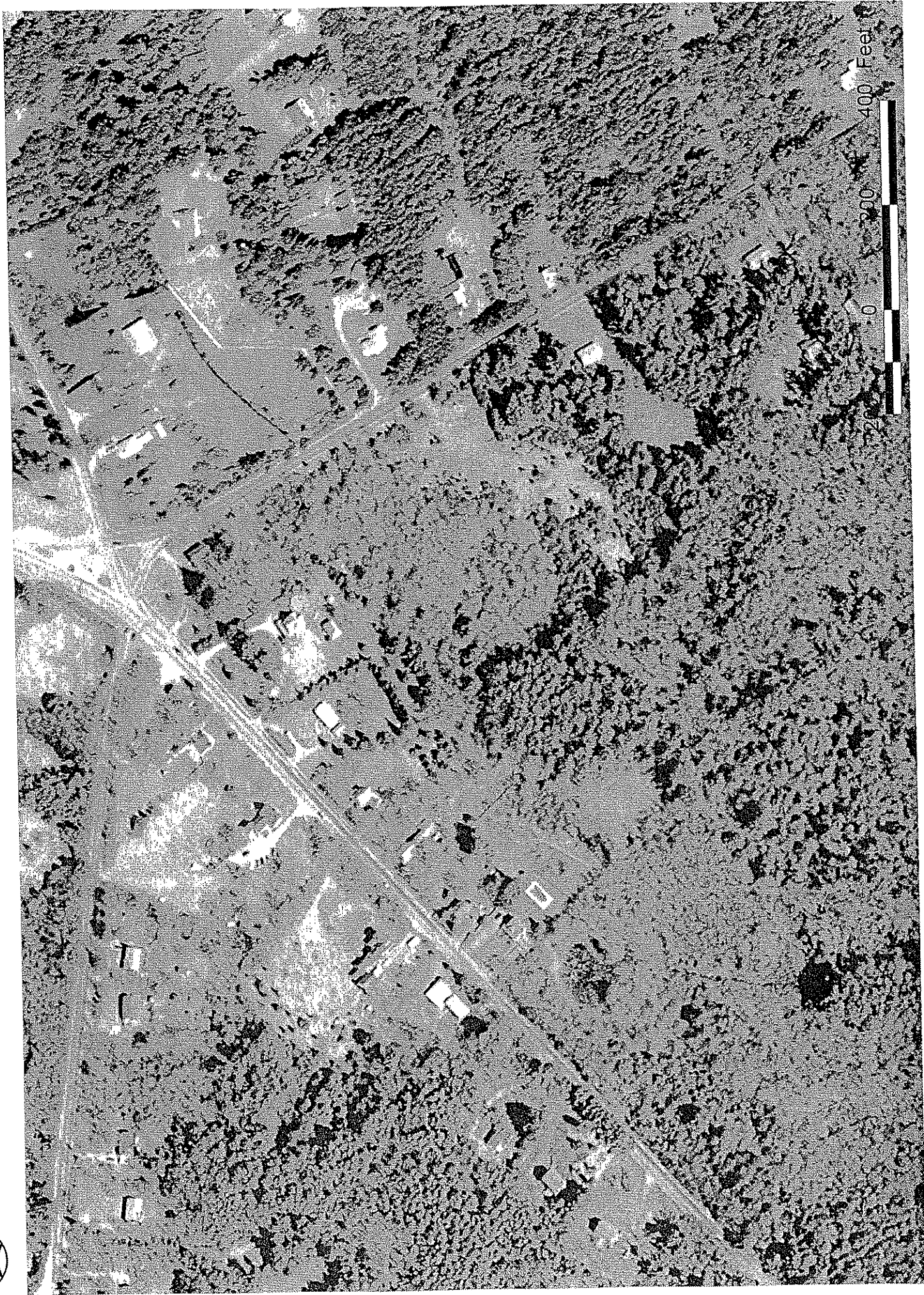


Council on Aging/Church of the Green





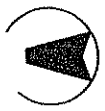
Green School House Parcel





Plymouth Street, North Middleborough Parcel





Tispaquin / Chestnut Parcel



